

# pressure reducing valve

GBO.LOK®



**RH1 series**

**pressure reducing valve**

**feature**

1. Single stage pressure reducing structure;
2. The valve body and diaphragm adopt a hard sealing structure;
3. Valve body thread: 1/4 "NPT female thread;
4. The internal structure is easy to blow;
5. Equipped with an internal filter screen;
6. It can be installed in panel or wall style.



**Technical Parameter**

**Function characteristics**

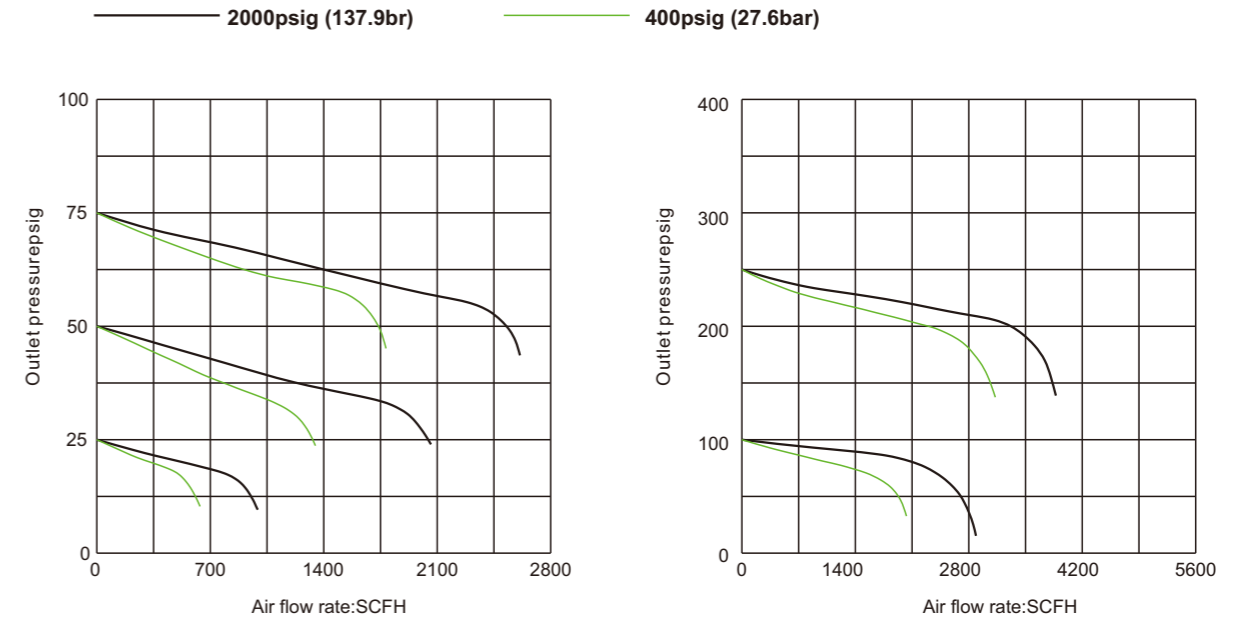
<b>Input pressure</b>	500psig(34.4bar);3000psig(206.8bar)
<b>Output pressure</b>	0-25psig (0-1.7bar)
	0-50psig (0-3.4bar)
	0-100psig (0-6.8bar)
<b>Verify pressure</b>	0-250psig (0.-17.2bar)
	0-500psig (0-34.4bar)
	The maximum work pressure 150%
<b>Applicable temperature</b>	-40°C to +74°C (-40°F to +165°F)
<b>Leakage</b>	≤2x10 <sup>-8</sup> sccs (helium)
<b>Cv value</b>	0.08

**Structural materials**

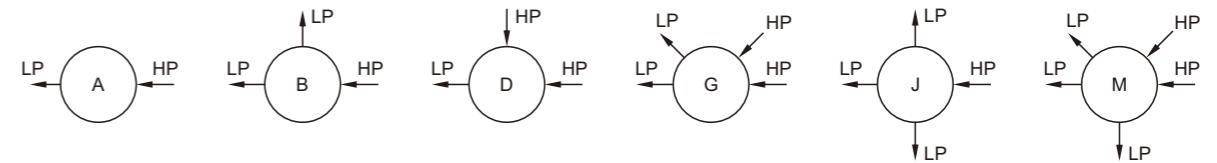
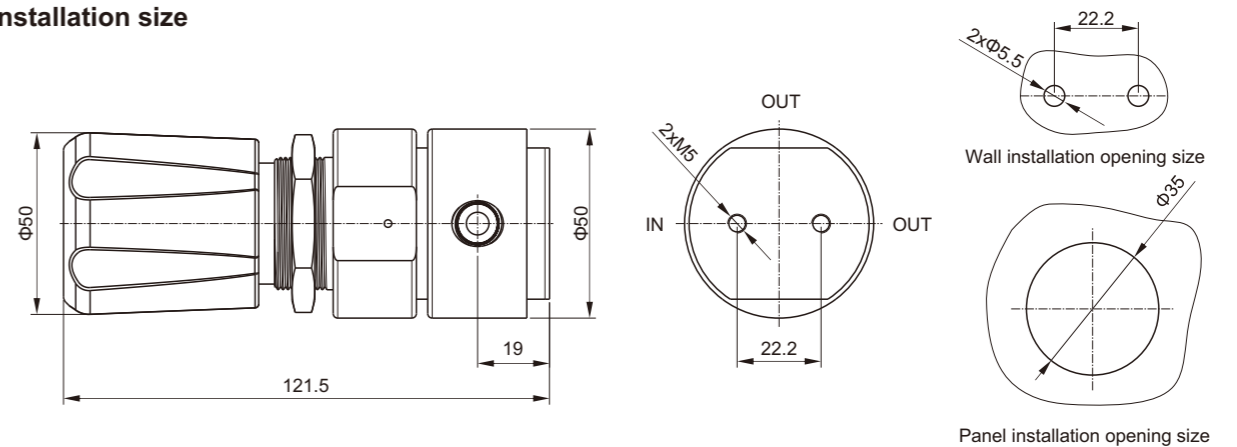
<b>valve body</b>	SS 316L
<b>upper cover</b>	SS 316L
<b>diaphragm</b>	SS 316L
<b>filter screen</b>	SS 316L, 10µm
<b>valve seat</b>	PCTFE, PTFE or Vespel®
<b>spring</b>	SS 316L
<b>valve core top rod</b>	SS 316L

**Flow Curve Chart**

**Inlet pressure**



**Installation size**



Ordering Information

Example

RH1	6L	B	D	F	G	00	00	P
1	2	3	4	5	6	7	8	9

1	<b>Valve series</b>	RH1	
---	---------------------	-----	--

2	<b>Valve body material</b>	6L	B
		SS 316L	brass

3	<b>Valve body hole position</b>	See Installation size
---	---------------------------------	-----------------------

4	<b>Input pressure</b>	D	F
		3000psig	500psig

5	<b>Output pressure</b>	F	G	I	K	L
		0-500psig	0-250psig	0-100psig	0-50psig	0-25psig
		Q	S	T	U	
		30"Hg Vac-30psig	30"Hg Vac-60psig	30"Hg Vac-100psig	30"Hg Vac-200psig	

6	<b>Pressure gauge</b>	G	P	W
		Pressure gauge (MPa)	Pressure gauge (psi/bar)	NO Pressure gauge

7	<b>Air intake form</b>	00	01	23	24	27
		1/4"NPT female thread	1/4"NPT male thread	CGA330	CGA350	CGA580
		28	30	52	63	64
		CGA660	CGA590	G5/8 -RH(F)	W21.8-14RH(F)	W21.8-14LH(F)

Other forms of connectors are available for selection

8	<b>Exhaust form</b>	00	01	10	11
		1/4"NPT female thread	1/4"NPT male thread	1/8" card sleeve connector	1/4" card sleeve connector
		12	15	16	74
		3/8" card sleeve connector	6mm card sleeve connector	8mm card sleeve connector	M8x1-RH(M)

Other forms of connectors are available for selection

9	<b>Option</b>	P	R	N	D
		Panel installation	safety valve	needle valve	Diaphragm valve

**RH2 series**

**pressure reducing valve**

feature

1. Single stage pressure reducing structure;
2. The valve body and diaphragm adopt a hard sealing structure;
3. Valve body thread: 1/2 "NPT female thread for inlet and outlet ports;  
1/4" NPT female thread for pressure gauge and safety valve ports;
4. Equipped with an internal filter screen;
5. It can be installed in panel or wall style.



**Technical Parameter**

Function characteristics

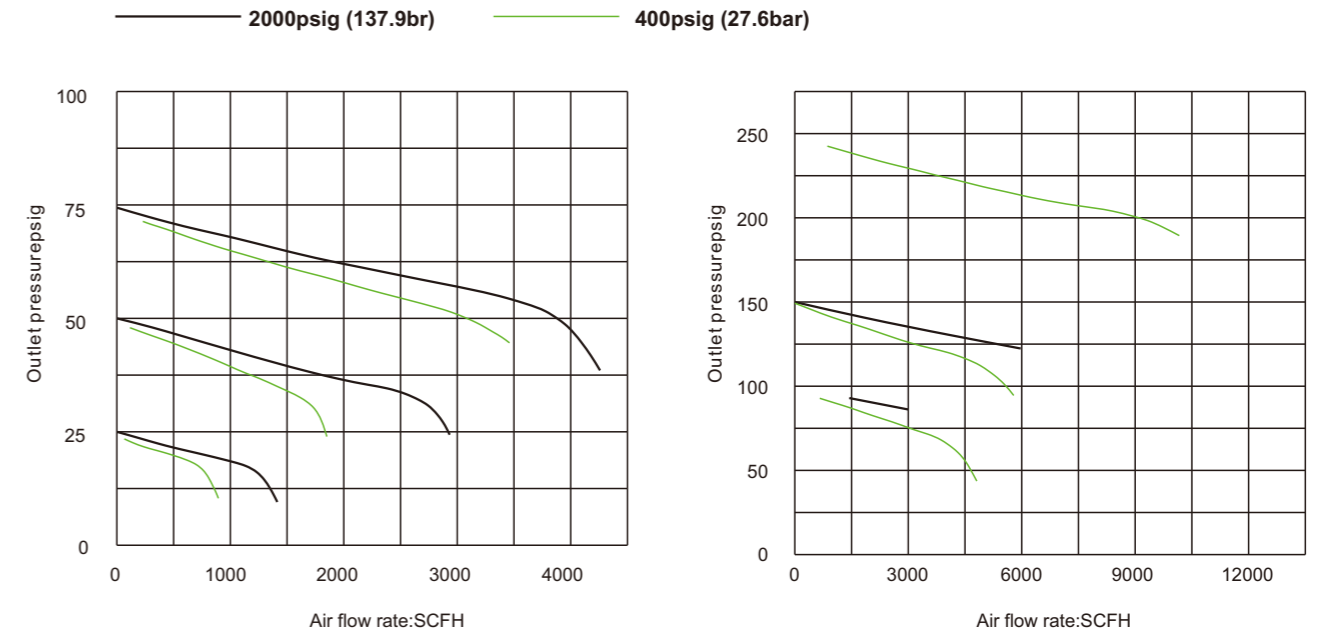
Input pressure	500psig(34.4bar),3000psig(206.8bar)
Output pressure	0-25psig (0-1.7bar)
	0-50psig (0-3.4bar)
	0-100psig (0-6.8bar)
	0-125psig (0-8.9bar)
Verify pressure	0-250psig (0-17.2bar)
	The maximum work pressure150%
Applicable temperature	-40°C to +74°C (-40°F to +165°F)
Leakage	≤2x10 <sup>-8</sup> sccs (helium)
Cv value	1.1

Structural materials

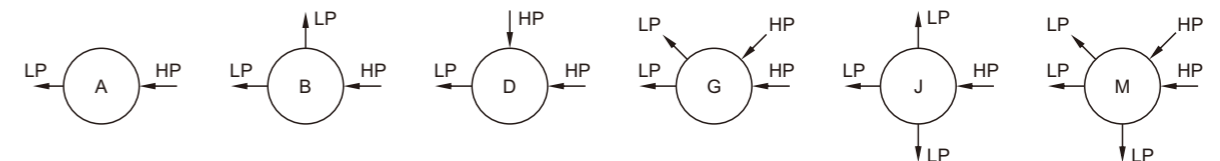
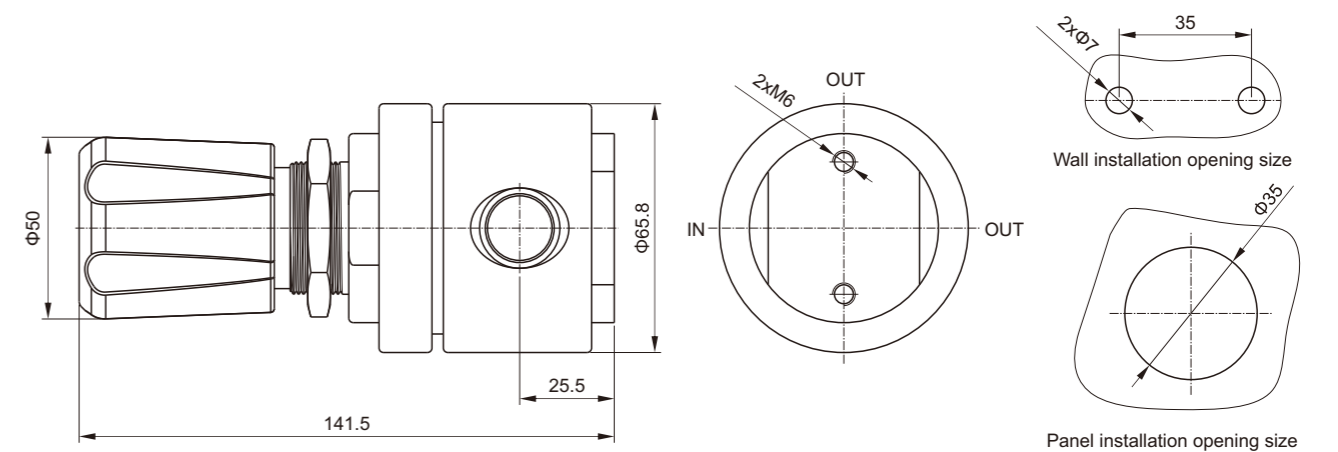
valve body	SS 316L
upper cover	SS 316L
diaphragm	SS 316L
filter screen	SS 316L, 10µm
valve seat	PCTFE, PTFE
spring	SS 316L
valve core top rod	SS 316L

**Flow Curve Chart**

Inlet pressure



**Installation size**



**Ordering Information**

**Example**

RH2	6L	B	D	G	G	02	02	P
1	2	3	4	5	6	7	8	9

1	<b>Valve series</b>	RH2	
---	---------------------	-----	--

2	<b>Valve body material</b>	6L	B
		SS 316L	brass

3	<b>Valve body hole position</b>	See Installation size
---	---------------------------------	-----------------------

4	<b>Input pressure</b>	D	F
		3000psig	500psig

5	<b>Output pressure</b>	G	H	I	K	L
		0-250psig	0-125psig	0-100psig	0-50psig	0-25psig
		Q	S	T	U	
		30"Hg Vac-30psig	30"Hg Vac-60psig	30"Hg Vac-100psig	30"Hg Vac-200psig	

6	<b>Pressure gauge</b>	G	P	W
		Pressure gauge (MPa)	Pressure gauge (psi/bar)	NO Pressure gauge

7	<b>Air intake form</b>	02	03	04
		3/8"NPT female thread	3/8"NPT male thread	1/2"NPT female thread
		05	12	13
		1/2"NPT male thread	3/8" card sleeve connector	1/2" card sleeve connector

Other forms of connectors are available for selection

8	<b>Exhaust form</b>	02	03	04
		3/8"NPT female thread	3/8"NPT male thread	1/2"NPT female thread
		05	12	13
		1/2"NPT male thread	3/8" card sleeve connector	1/2" card sleeve connector

Other forms of connectors are available for selection

9	<b>Option</b>	P	R
		Panel installation	safety valve

**RH3 series**

**pressure reducing valve**

**feature**

1. Single stage pressure reducing structure;
2. The valve body and diaphragm adopt a hard sealing structure;
3. Valve body thread: 3/4 "NPT female thread for inlet and outlet ports;  
1/4" NPT female thread for pressure gauge and safety valve ports;
4. The internal structure is easy to blow;
5. Equipped with an internal filter screen;
6. It can be installed in panel or wall style.



**Technical Parameter**

**Function characteristics**

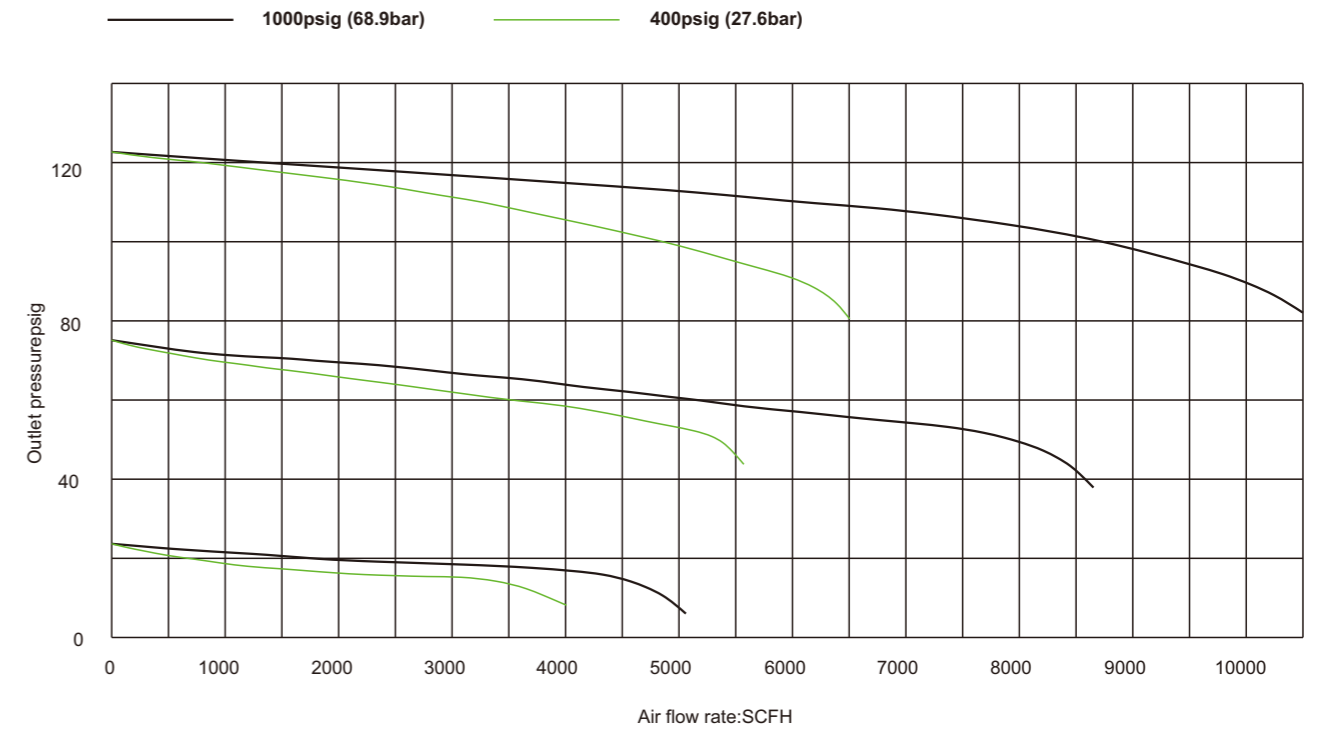
<b>Input pressure</b>	500psig(34.4bar), 1500psig(103.4bar)
<b>Output pressure</b>	0-15psig (0-1.0bar)
	0-25psig (0-1.7bar)
	0-75psig (0-5.2bar)
	0-125psig (0.-8.6bar)
<b>Verify pressure</b>	The maximum work pressure150%
<b>Applicable temperature</b>	-40°C to +74°C (-40°F to +165°F)
<b>Leakage</b>	≤2x10 <sup>-8</sup> sccs (helium)
<b>Cv value</b>	1.8

**Structural materials**

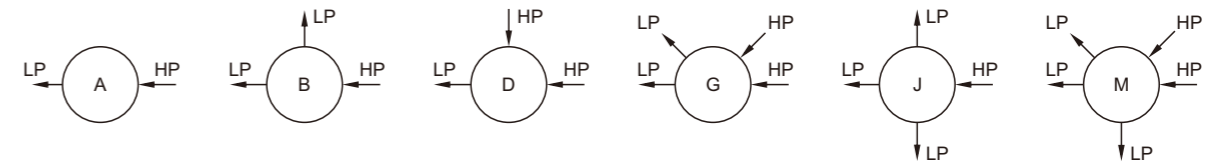
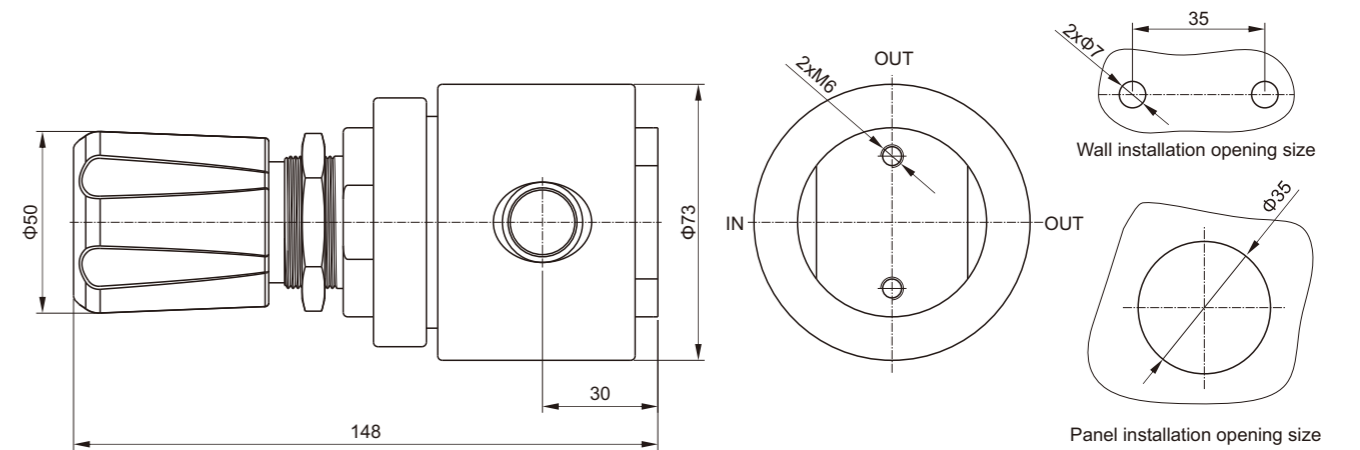
<b>valve body</b>	SS 316L
<b>upper cover</b>	SS 316L
<b>diaphragm</b>	SS 316L
<b>filter screen</b>	SS 316L, 10μm
<b>valve seat</b>	PCTFE, PTFE
<b>spring</b>	SS 316L
<b>valve core top rod</b>	SS 316L

**Flow Curve Chart**

**Inlet pressure**



**Installation size**



**Ordering Information**

**Example**

RH3	6L	B	E	H	G	04	04	P
1	2	3	4	5	6	7	8	9

1	<b>Valve series</b>	RH3	
---	---------------------	-----	--

2	<b>Valve body material</b>	6L	B
		SS 316L	brass

3	<b>Valve body hole position</b>	See Installation size
---	---------------------------------	-----------------------

4	<b>Input pressure</b>	E	F
		1500psig	500psig

5	<b>Output pressure</b>	H	J	L	M
		0-125psig	0-75psig	0-25psig	0-15psig
		Q	S	T	
		30"Hg Vac-30psig	30"Hg Vac-60psig	30"Hg Vac-100psig	

6	<b>Pressure gauge</b>	G	P	W
		Pressure gauge (MPa)	Pressure gauge (psi/bar)	NO Pressure gauge

7	<b>Air intake form</b>	04	05	06
		1/2"NPT female thread	1/2"NPT male thread	3/4"NPT female thread
		13	14	
		1/2" card sleeve connector	3/4" card sleeve connector	

Other forms of connectors are available for selection

8	<b>Exhaust form</b>	04	05	06
		1/2"NPT female thread	1/2"NPT male thread	3/4"NPT female thread
		13	14	
		1/2" card sleeve connector	3/4" card sleeve connector	

Other forms of connectors are available for selection

9	<b>Option</b>	P	R
		Panel installation	safety valve

**RH31 series**

**pressure reducing valve**

**feature**

1. The valve body adopts a five hole design;
2. Double stage pressure reducing structure;
3. The valve body and diaphragm adopt a hard sealing structure;
4. Valve body thread: 1/4 "NPT female thread for inlet and outlet ports;
5. The internal structure is easy to blow;
6. Equipped with an internal filter screen;
7. Only panel installation is allowed;
8. Needle valve or diaphragm valve can be used as the outlet form.



**Technical Parameter**

**Function characteristics**

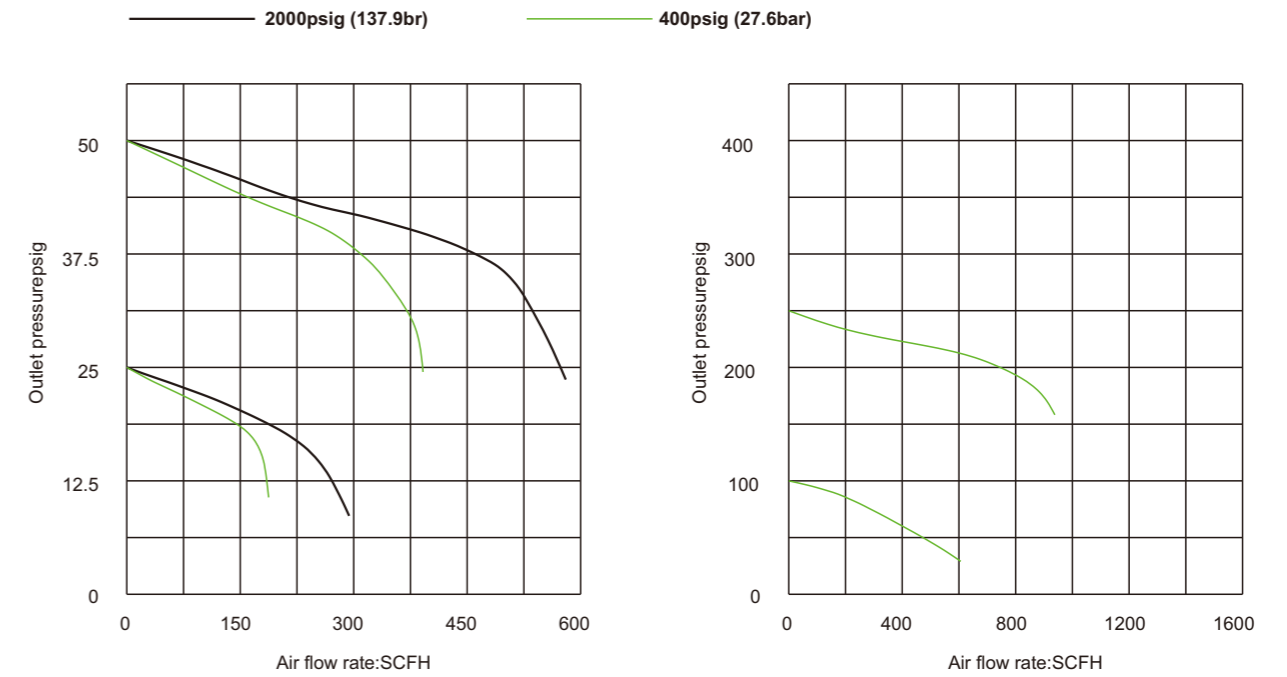
<b>Input pressure</b>	500psig(34.4bar),3000psig(206.8bar)
<b>Output pressure</b>	0-25psig (0-1.7bar)
	0-50psig (0-3.4bar)
	0-100psig (0-6.8bar)
<b>Verify pressure</b>	0-250psig (0-17.2bar)
	The maximum work pressure150%
<b>Applicable temperature</b>	-40°C to +74°C (-40°F to +165°F)
<b>Leakage</b>	≤2x10 <sup>-8</sup> sccs (helium)
<b>Cv value</b>	0.06

**Structural materials**

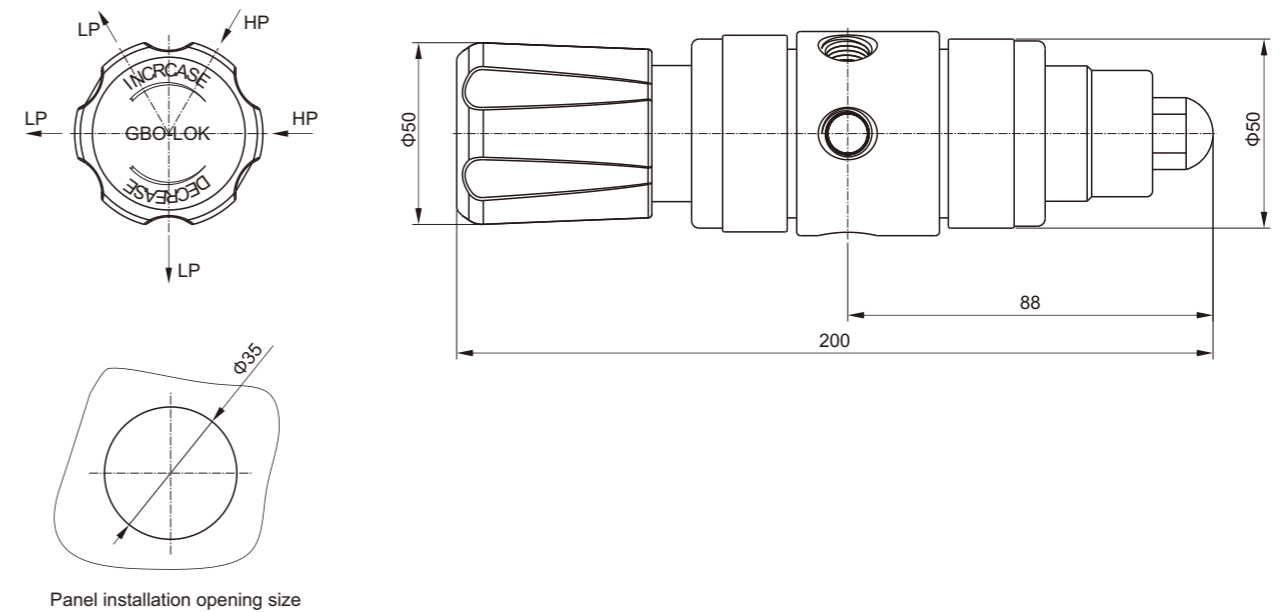
<b>valve body</b>	SS 316L,brass
<b>upper cover</b>	SS 316L,brass
<b>diaphragm</b>	SS 316L
<b>filter screen</b>	SS 316L, 10µm
<b>valve seat</b>	PCTFE, PTFE or Vespel®
<b>spring</b>	SS 316L
<b>valve core top rod</b>	SS 316L

**Flow Curve Chart**

**Inlet pressure**



**Installation size**





**Ordering Information**

**Example**

RH31	6L	D	G	G	00	00	P
1	2	3	4	5	6	7	8

1	<b>Valve series</b>	RH31
---	---------------------	------

2	<b>Valve body material</b>	6L SS 316L	B brass
---	----------------------------	---------------	------------

3	<b>Input pressure</b>	D 3000psig	F 500psig
---	-----------------------	---------------	--------------

4	<b>Output pressure</b>	L 0-25psig	K 0-50psig	I 0-100psig	G 0-250psig
		Q 30"Hg Vac-30psig	S 30"Hg Vac-60psig	T 30"Hg Vac-100psig	U 30"Hg Vac-200psig

5	<b>Pressure gauge</b>	G Pressure gauge(MPa)	P Pressure gauge (psi/bar)	W NO Pressure gauge
---	-----------------------	--------------------------	-------------------------------	------------------------

6	<b>Air intake form</b>	00 1/4"NPT female thread	01 1/4"NPT male thread	23 CGA330	24 CGA350	27 CGA580
		28 CGA660	30 CGA590	52 G5/8 -RH(F)	63 W21.8-14RH(F)	64 W21.8-14LH(F)

Other forms of connectors are available for selection

7	<b>Exhaust form</b>	00 1/4"NPT female thread	01 1/4"NPT male thread	10 1/8" card sleeve connector	11 1/4" card sleeve connector
		12 3/8" card sleeve connector	15 6mm card sleeve connector	16 8mm card sleeve connector	74 M8x1-RH(M)

Other forms of connectors are available for selection

8	<b>Option</b>	P Panel installation	R safety valve	N needle valve	D Diaphragm valve
---	---------------	-------------------------	-------------------	-------------------	----------------------

**RH4 series**

**pressure reducing valve**

**feature**

1. Piston type pressure reducing structure;
2. Valve body thread: 1/4 "NPT female thread;
3. Equipped with an internal filter screen;
4. It can be installed in panel or wall style.



**Technical Parameter**

**Function characteristics**

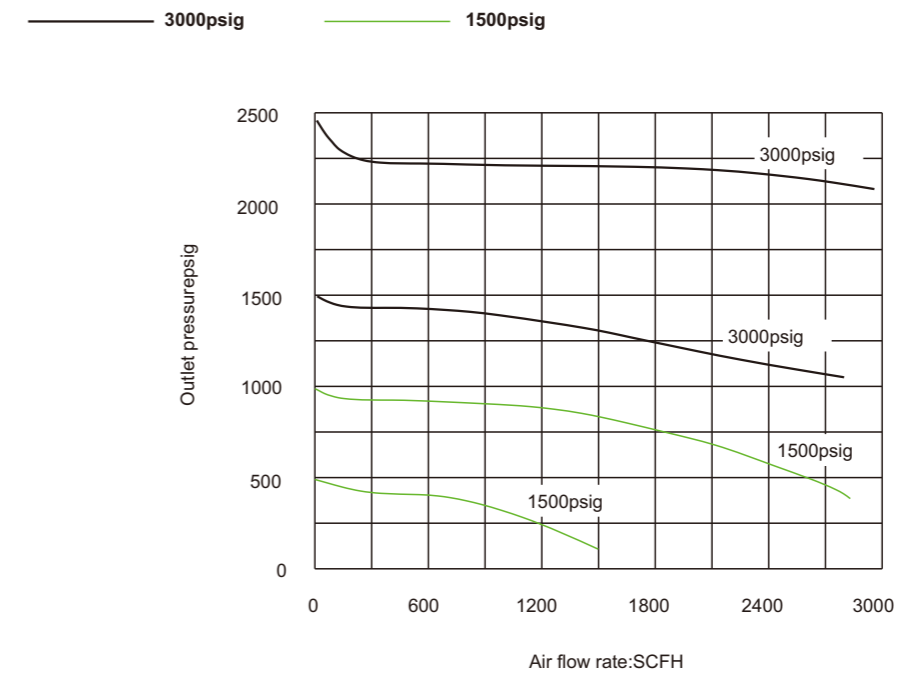
<b>Input pressure</b>	3000psig(206.8bar),6000psig(413.7bar)
<b>Output pressure</b>	0-250psig (0-17.2bar)
	0-500psig (0-34.4bar)
	0-1500psig (0-103.4bar)
	0-3000psig (0-206.8bar)
<b>Verify pressure</b>	The maximum work pressure150%
<b>Applicable temperature</b>	-23°C to +74°C (-10°F to +165°F)
<b>Leakage</b>	Foam test
<b>Cv value</b>	0.06

**Structural materials**

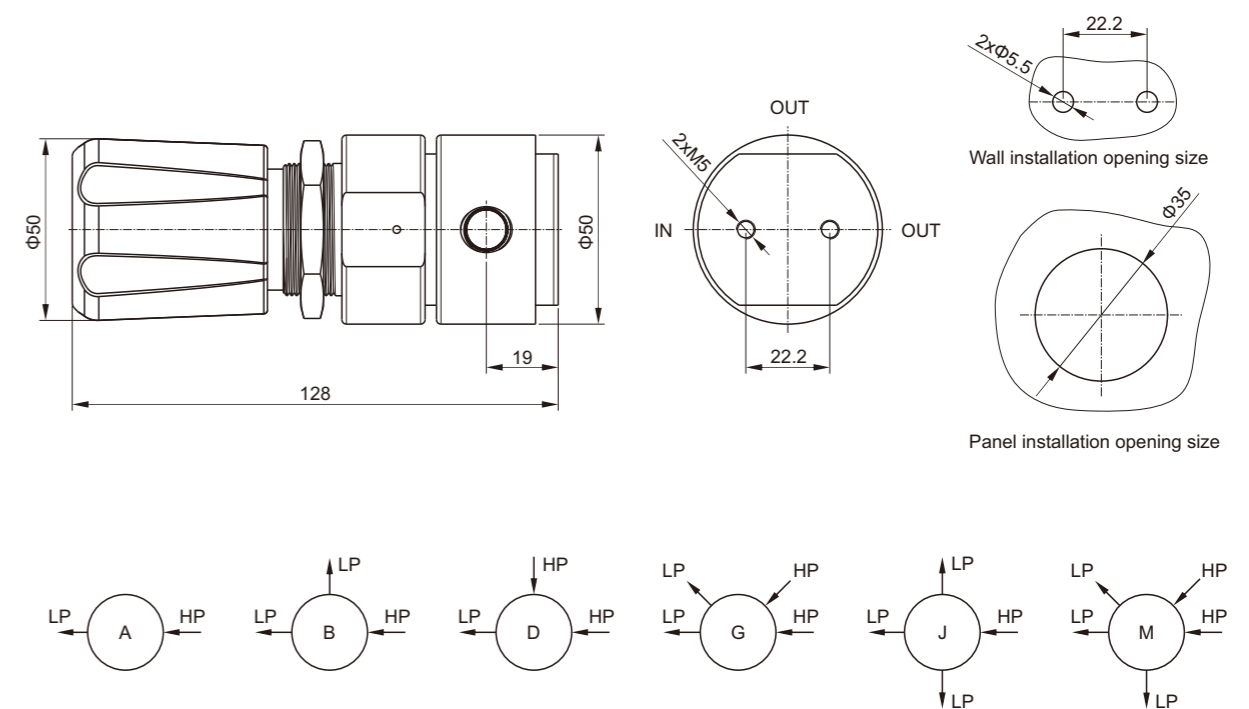
<b>valve body</b>	SS 316L
<b>upper cover</b>	SS 316L
<b>valve seat</b>	PCTFE
<b>filter screen</b>	SS 316L, 10µm
<b>O-rings</b>	Viton
<b>spring</b>	SS 316L
<b>valve core top rod</b>	SS 316L

**Flow Curve Chart**

**Inlet pressure**



**Installation size**



**Ordering Information**

**Example**

RH4	6L	B	B	D	G	00	00	P
1	2	3	4	5	6	7	8	9

1	<b>Valve series</b>	RH4
---	---------------------	-----

2	<b>Valve body material</b>	6L
		SS 316L

3	<b>Valve body hole position</b>	See Installation size
---	---------------------------------	-----------------------

4	<b>Input pressure</b>	B	D
		6000psig	3000psig

5	<b>Output pressure</b>	D	E	F	G
		0-3000psig	0-1500psig	0-500psig	0-250psig

6	<b>Pressure gauge</b>	G	P	W
		Pressure gauge (MPa)	Pressure gauge (psi/bar)	NO Pressure gauge

7	<b>Air intake form</b>	00	01	10	11
		1/4"NPT female thread	1/4"NPT male thread	1/8" card sleeve connector	1/4" card sleeve connector
		12	15	16	
		3/8" card sleeve connector	6mm card sleeve connector	8mm card sleeve connector	

Other forms of connectors are available for selection

8	<b>Exhaust form</b>	00	01	10	11
		1/4"NPT female thread	1/4"NPT male thread	1/8" card sleeve connector	1/4" card sleeve connector
		12	15	16	
		3/8" card sleeve connector	6mm card sleeve connector	8mm card sleeve connector	

Other forms of connectors are available for selection

9	<b>Option</b>	P
		Panel installation

**RH6 series**

**pressure reducing valve**

**feature**

1. Single stage pressure reducing structure;
2. The membrane adopts a double-layer structure of nylon and nitrile rubber;
3. Valve body thread: 1 "NPT female thread for inlet and outlet ports;
4. Pressure gauge interface 1/4 "NPT female thread;
5. It can be installed in panel or wall style.



**Technical Parameter**

**Function characteristics**

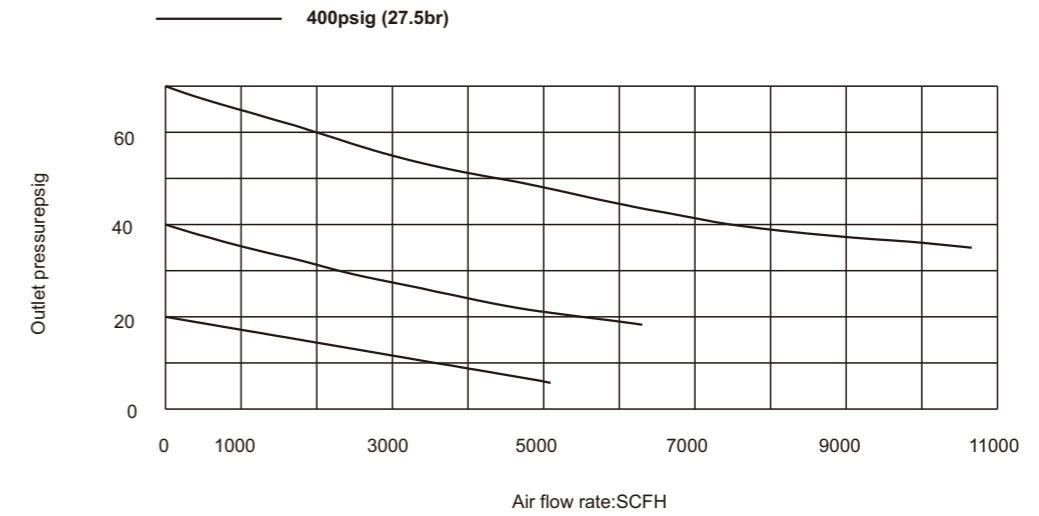
<b>Input pressure</b>	500psig(34.4bar)
<b>Output pressure</b>	0-25psig (0-1.7bar)
	0-50psig (0-3.4bar)
	0-100psig (0-6.8bar)
	0-125psig (0-8.6bar)
	0-250psig (0-17.2bar)
<b>Verify pressure</b>	The maximum work pressure150%
<b>Applicable temperature</b>	-23°C to +121°C (-10°F to +250°F)
<b>Leakage</b>	Foam test
<b>Cv value</b>	5.1

**Structural materials**

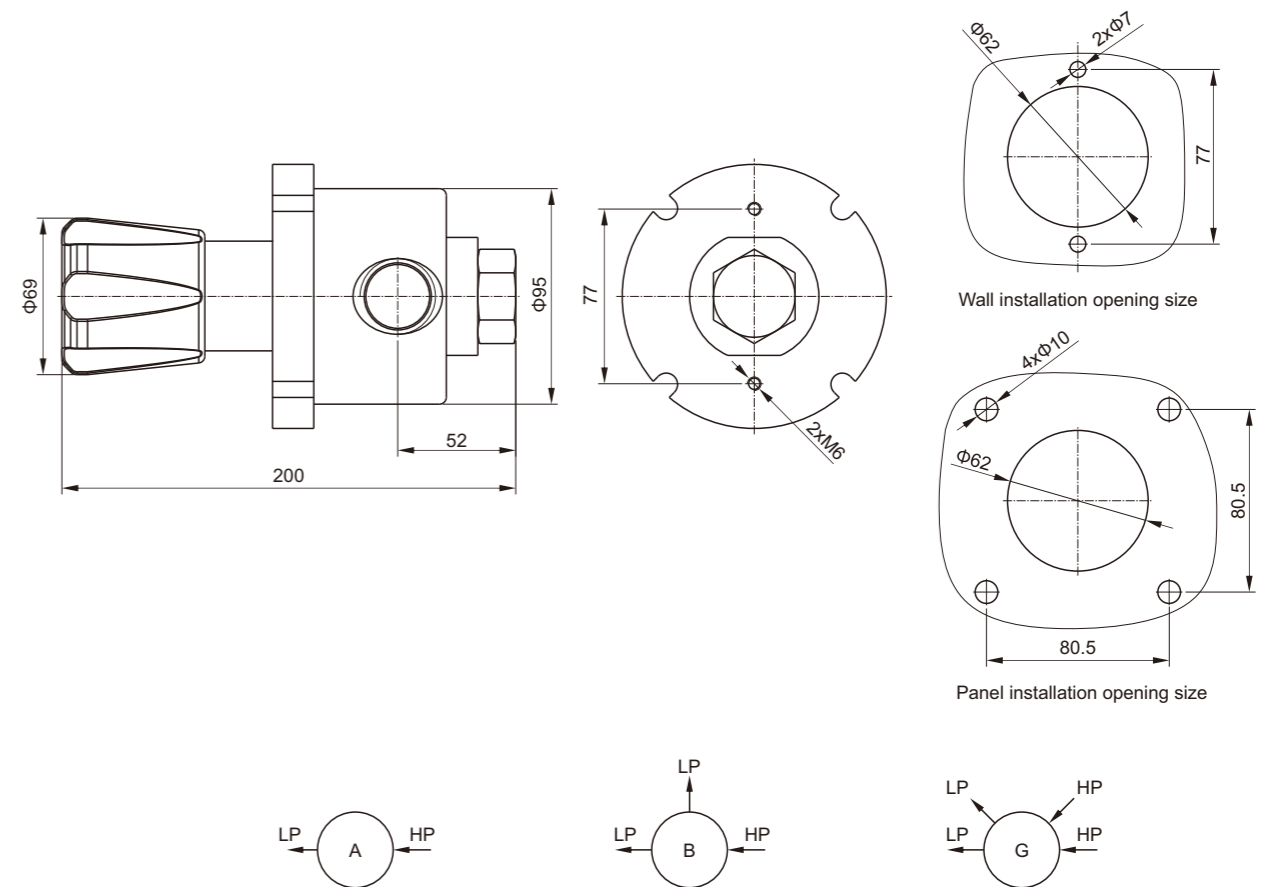
<b>valve body</b>	SS 316L,brass
<b>upper cover</b>	SS 316L,brass
<b>diaphragm</b>	Nitrile rubber(lined with nylon)
<b>valve seat</b>	Nitrile rubber
<b>spring</b>	SS 316L
<b>valve core top rod</b>	SS 316L

**Flow Curve Chart**

**Inlet pressure**



**Installation size**



**Ordering Information**

**Example**

RH6	6L	B	F	G	G	06	06
1	2	3	4	5	6	7	8

1	<b>Valve series</b>	RH6
---	---------------------	-----

2	<b>Valve body material</b>	6L SS 316L	B brass
---	----------------------------	---------------	------------

3	<b>Valve body hole position</b>	See Installation size
---	---------------------------------	-----------------------

4	<b>Input pressure</b>	F 500psig
---	-----------------------	--------------

5	<b>Output pressure</b>	G 0-250psig	H 0-125psig	I 0-100psig	K 0-50psig	L 0-25psig
---	------------------------	----------------	----------------	----------------	---------------	---------------

6	<b>Pressure gauge</b>	G Pressure gauge (MPa)	P Pressure gauge (psi/bar)	W NO Pressure gauge
---	-----------------------	---------------------------	-------------------------------	------------------------

7	<b>Air intake form</b>	06 3/4"NPT female thread	07 3/4"NPT male thread	08 1"NPT female thread	09 1"NPT male thread
---	------------------------	-----------------------------	---------------------------	---------------------------	-------------------------

Other forms of connectors are available for selection

8	<b>Exhaust form</b>	06 3/4"NPT female thread	07 3/4"NPT male thread	08 1"NPT female thread	09 1"NPT male thread
---	---------------------	-----------------------------	---------------------------	---------------------------	-------------------------

Other forms of connectors are available for selection

**RH7 series**

**pressure reducing valve**

feature

1. The valve body and diaphragm adopt a hard sealing structure;
2. Valve body thread: 1/4 "NPT female thread;
3. It can be installed in panel or wall style.



**Technical Parameter**

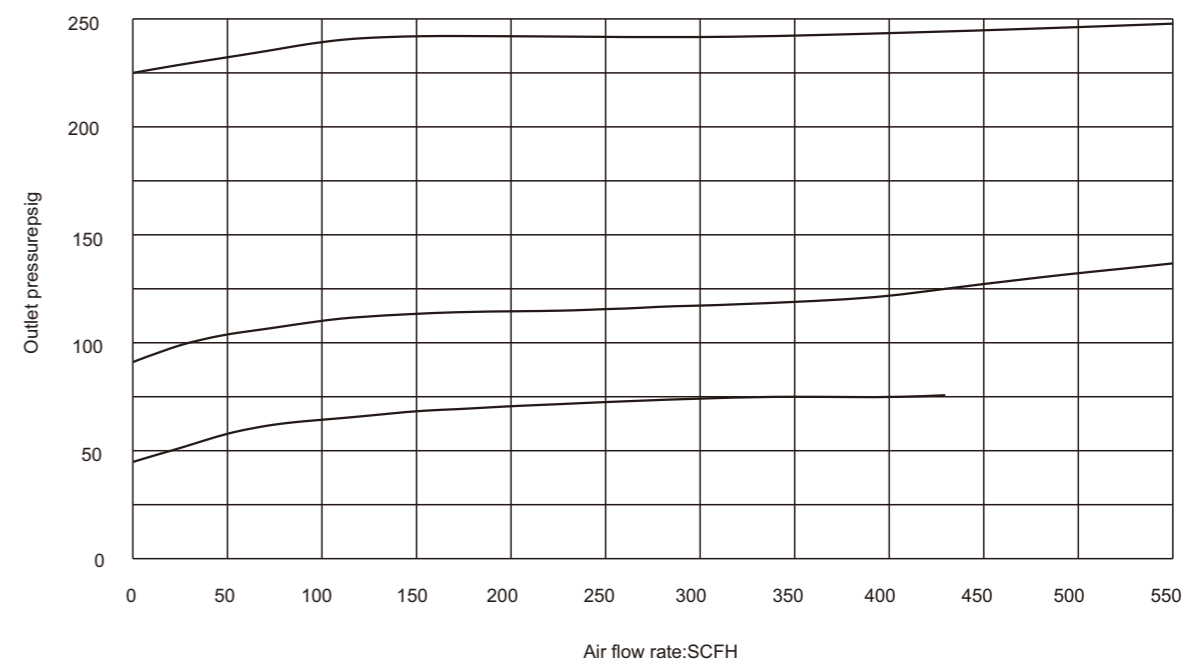
Function characteristics

Input pressure	250psig(1.7bar)
Output pressure	0-25psig (0-1.7bar)
	0-50psig (0-3.4bar)
	0-100psig (0-6.8bar)
	0-250psig (0-17.2bar)
Verify pressure	The maximum work pressure150%
Applicable temperature	-40°C to +74°C (-40°F to +165°F)
Leakage	≤2x10 <sup>-8</sup> sccs (helium)
Cv value	0.08

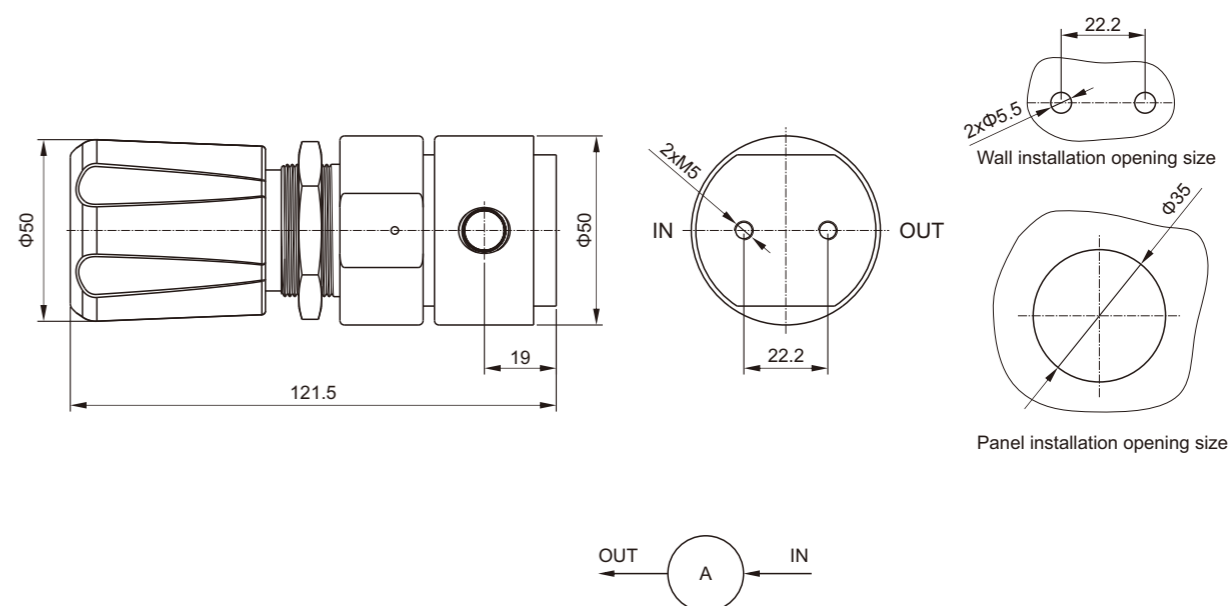
Structural materials

valve body	SS 316L
upper cover	SS 316L
diaphragm	SS 316L
valve seat	PCTFE, PTFE or Vespel®
spring	SS 316L
valve core top rod	SS 316L

**Flow Curve Chart**



**Installation size**



Ordering Information

Example

RH7	6L	A	G	00	00	P
1	2	3	4	5	6	7

1	<b>Valve series</b>					
	RH7					

2	<b>Valve body material</b>					
	6L SS 316L			B brass		

3	<b>Valve body hole position</b>					
	See Installation size					

4	<b>Adjust pressure</b>					
	G 0-250psig	I 0-100psig	K 0-50psig	L 0-25psig		

5	<b>Air intake form</b>					
	00 1/4"NPT female thread	01 1/4"NPT male thread	10 1/8" card sleeve connector	11 1/4" card sleeve connector	12 3/8" card sleeve connector	

Other forms of connectors are available for selection

6	<b>Exhaust form</b>					
	00 1/4"NPT female thread	01 1/4"NPT male thread	10 1/8" card sleeve connector	11 1/4" card sleeve connector	12 3/8" card sleeve connector	

Other forms of connectors are available for selection

7	<b>Option</b>					
	P Panel installation					

High pressure hose

feature

The max operating pressure of high-pressure hose is 3000PSI, which is used for connecting steel cylinders and pressure reducing valves, and can also be used in busbar systems.



Model	Import /export end connection type/specs	Length	Material
HPF-500	1/4"NPT(F) x 1/4"NPT(F)	500mm	metal hose lined with PTFE
HPS-500	1/4"NPT(F) x 1/4"NPT(F)	500mm	metal hose lined with 316 stainless steel
HPF-1000	1/4"NPT(F) x 1/4"NPT(F)	1000mm	metal hose lined with PTFE
HPS-1000	1/4"NPT(F) x 1/4"NPT(F)	1000mm	metal hose lined with 316 stainless steel

Pressure gauge

feature

The G20 series pressure gauge is mainly used for pressure display in pressure reducers and pipeline systems. The gauge specification is 2", the intake thread is 1/4" NPT, and the pressure gauge accuracy is 2.5 level, 3-2-3%. The material of the part in contact with the medium is 316L.



Model	Pressure gauge specs(psig/bar)
G20L-30	0-30
G20L-60	0-60
G20L-100	0-100
G20L-160	0-160
G20L-200	0-200
G20L-300	0-300
G20L-600	0-600
G20L-1600	0-1600
G20L-3000	0-3000
G20L-4000	0-4000
G20L-6000	0-6000
G20L-10000	0-10000
G20L-V30	30 in Hg VAC-30
G20L-V60	30 in Hg VAC-60
G20L-V100	30 in Hg VAC-100
G20L-V160	30 in Hg VAC-160
G20L-V200	30 in Hg VAC-200
G20L-V300	30 in Hg VAC-300

Model	Pressure gauge specs(MPa)
G20L-60M	0-60
G20L-40M	0-40
G20L-25M	0-25
G20L-16M	0-16
G20L-6M	0-6
G20L-4M	0-4
G20L-2.5M	0-2.5
G20L-1.6M	0-1.6
G20L-1M	0-1
G20L-0.6M	0-0.6
G20L-0.25M	0-0.25
G20L-0.16M	0-0.16
G20L-V0.15	V-0.15
G20L-V0.3	V-0.3
G20L-V0.5	V-0.5
G20L-V0.9	V-0.9
G20L-V2.4	V-2.4

### One-way valve

**feature**

The one-way valve adopts an integrated design and is suitable for controlling the flow direction of pipeline systems. The max working pressure is 3000psig.



Model	Opening pressure(psig)	Import /export end connection type/specs	Material
CV10-L-01-1/3	1/3	1/4" NPT(M)	316SS
CV10-L-01-1	1	1/4" NPT(M)	316SS
CV10-L-01-10	10	1/4" NPT(M)	316SS
CV10-L-01-25	25	1/4" NPT(M)	316SS
CV10-L-05-1/3	1/3	1/4" NPT(M)	316SS
CV10-L-05-1	1	1/4" NPT(M)	316SS
CV10-L-05-10	10	1/4" NPT(M)	316SS
CV10-L-05-25	25	1/4" NPT(M)	316SS

### safety valve

**feature**

Adjustable safety valves are suitable for pressure reducers, and the safety valve design has a wide adjustable range to meet different usage needs.



Model	Adjustment range(psig)	Import /export end connection type/specs	Material
RV11-L-20	10-20	1/4"NPT(M) x 1/4"NPT(F)	316SS
RV11-L-100	20-100	1/4"NPT(M) x 1/4"NPT(F)	316SS
RV11-L-250	100-250	1/4"NPT(M) x 1/4"NPT(F)	316SS
RV11-L-500	250-500	1/4"NPT(M) x 1/4"NPT(F)	316SS
RV11-L-750	500-750	1/4"NPT(M) x 1/4"NPT(F)	316SS
RV11-B-20	10-20	1/4"NPT(M) x 1/4"NPT(F)	brass,surface electroplating
RV11-B-100	20-100	1/4"NPT(M) x 1/4"NPT(F)	brass,surface electroplating
RV11-B-250	100-250	1/4"NPT(M) x 1/4"NPT(F)	brass,surface electroplating
RV11-B-500	250-500	1/4"NPT(M) x 1/4"NPT(F)	brass,surface electroplating
RV11-B-750	500-750	1/4"NPT(M) x 1/4"NPT(F)	brass,surface electroplating

### needle valve

**feature**

Flow regulating components for pipeline systems, used to adjust the flow range of pressure reducers or pipeline systems.



Model	Max service pressure(psig)	Import /export end connection type/specs	Material
NV10-L-M4N	5000	1/4"NPT(M) x 1/4"NPT(M)	316SS
NV10-L-M4N-S4	5000	1/4"NPT(M) x 1/4" card sleeve connector	316SS

### Diaphragm valve

**feature**

Diaphragm valve is suitable for high-purity gases and corrosive gasesInternally adopts Diaphragm sealing structure, with good sealing performance Has minimal impact on the purity of the gas medium and operates at max efficiency Pressure:3500psig.



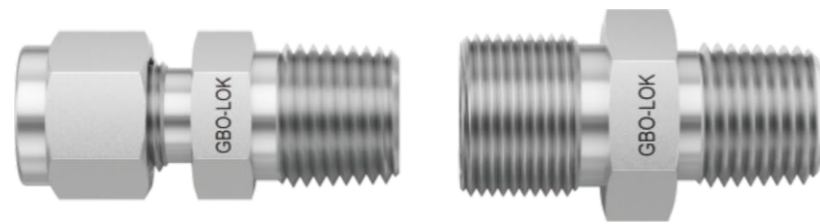
Model	Import /export end connection type/specs	Material
DV10-B-M4N-F4N	1/4"NPT(M) x 1/4"NPT(F)	brass,surface electroplating
DV10-L-M4N-F4N	1/4"NPT(M) x 1/4"NPT(F)	316SS



**joint**

**feature**

The connector is suitable for the intake of pressure reducers.



Model	Import /export end connection type/specs	Material
R11-51	1/4"NPT(M) x 1/4"NPT(M)	brass
R11-51P	1/4"NPT(M) x 1/4"NPT(M)	brass,surface electroplating
R11-51L	1/4"NPT(M) x 1/4"NPT(M)	316SS
R11-52	1/4"NPT(M) x M16(RH)	brass
R11-52A	1/4"NPT(M) x M16(LH)	brass
R11-52P	1/4"NPT(M) x M16(RH)	brass,surface electroplating
R11-52AP	1/4"NPT(M) x M16(LH)	brass,surface electroplating
R11-52L	1/4"NPT(M) x M16(RH)	316SS
R11-52AL	1/4"NPT(M) x M16(LH)	316SS
MC-M4N-S4	1/4"NPT(M) x 1/4" card sleeve connector	316SS
MC-M4N-S6	1/4"NPT(M) x 3/8" card sleeve connector	316SS
MC-M4N-S8	1/4"NPT(M) x 1/2" card sleeve connector	316SS

**Intake pipe, intake nut**

**feature**

The intake pipe and intake nut are suitable for the intake of pressure reducers. Connection of valve outlet and pipeline welding.



Joint specifications	Threaded Connection(1/4"NPT)	Welding Connection (1/4"T-pipe butt welding)
	Model	Model
G5/8"-RH	RH1-5	RHW1-5
W21.8-LH	RH1-5H	RHW1-5H
W21.8-RH	RH1-5Q	RHW1-5Q
CGA320	RH1-532	RHW1-532
CGA326	RH1-5326	RHW1-5326
CGA350	RH1-535	RHW1-535
CGA500	RH1-550	RHW1-550
CGA540	RH1-554	RHW1-554
CGA580	RH1-558	RHW1-558
CGA590	RH1-559	RHW1-559
CGA660	RH1-566	RHW1-566