

Table valve and valve group

GBO.LOK®

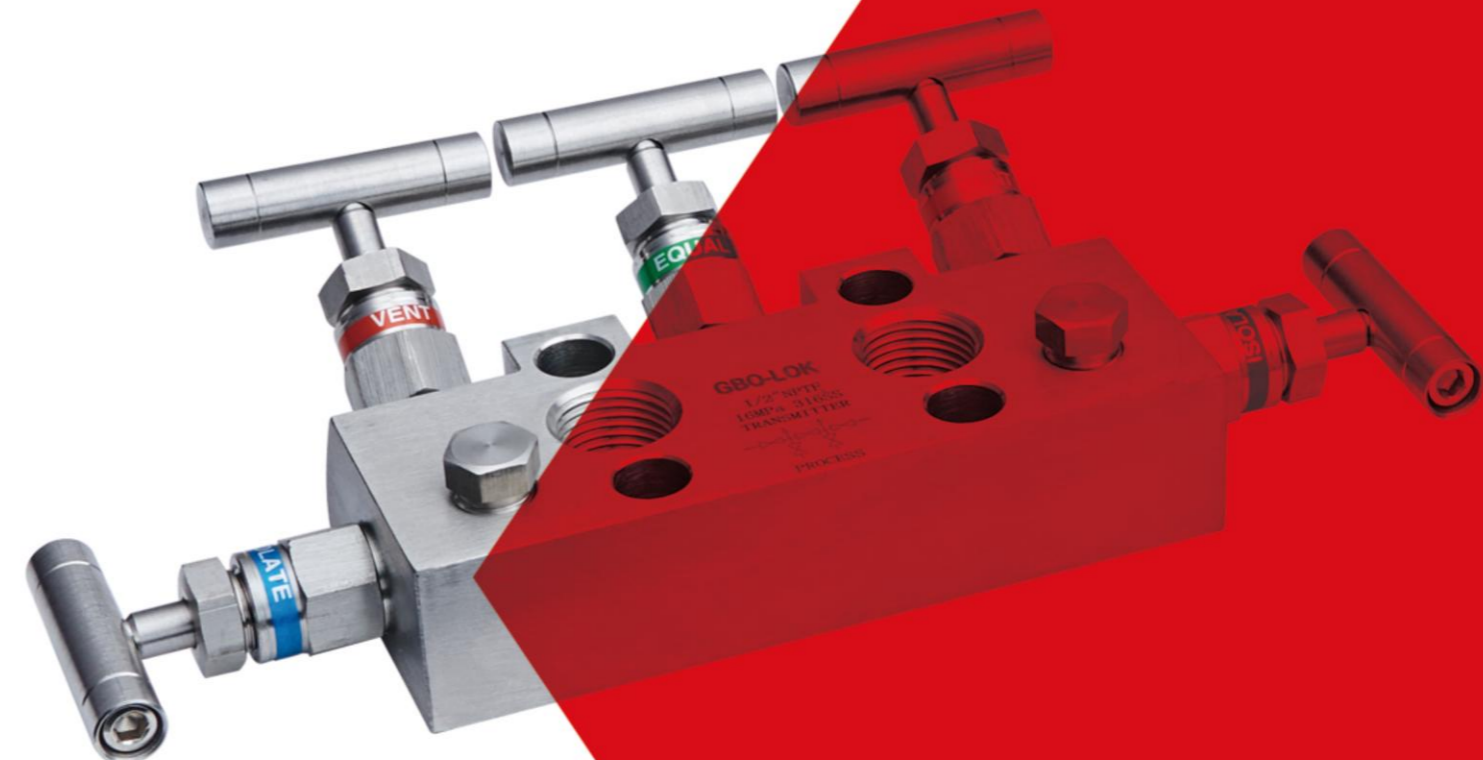
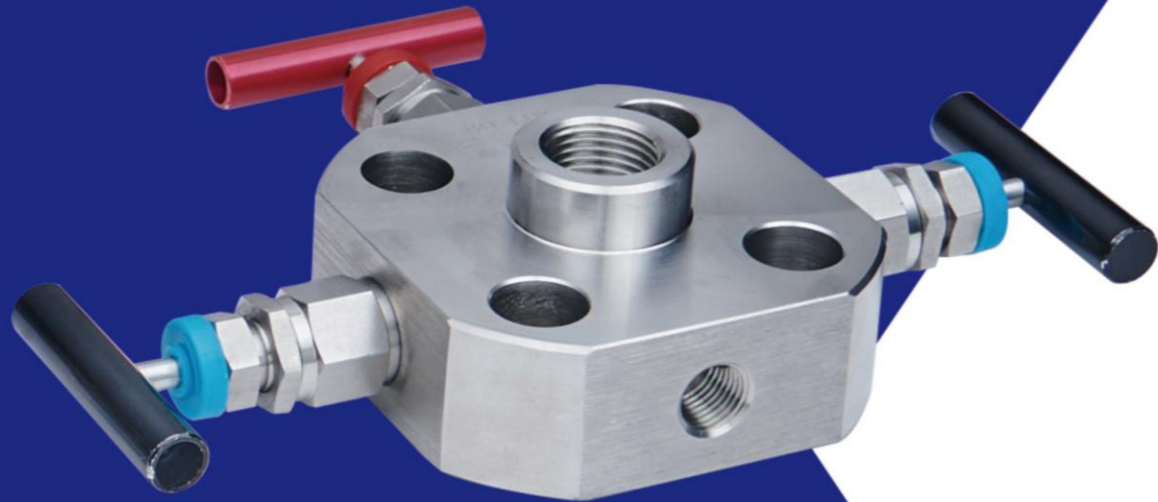
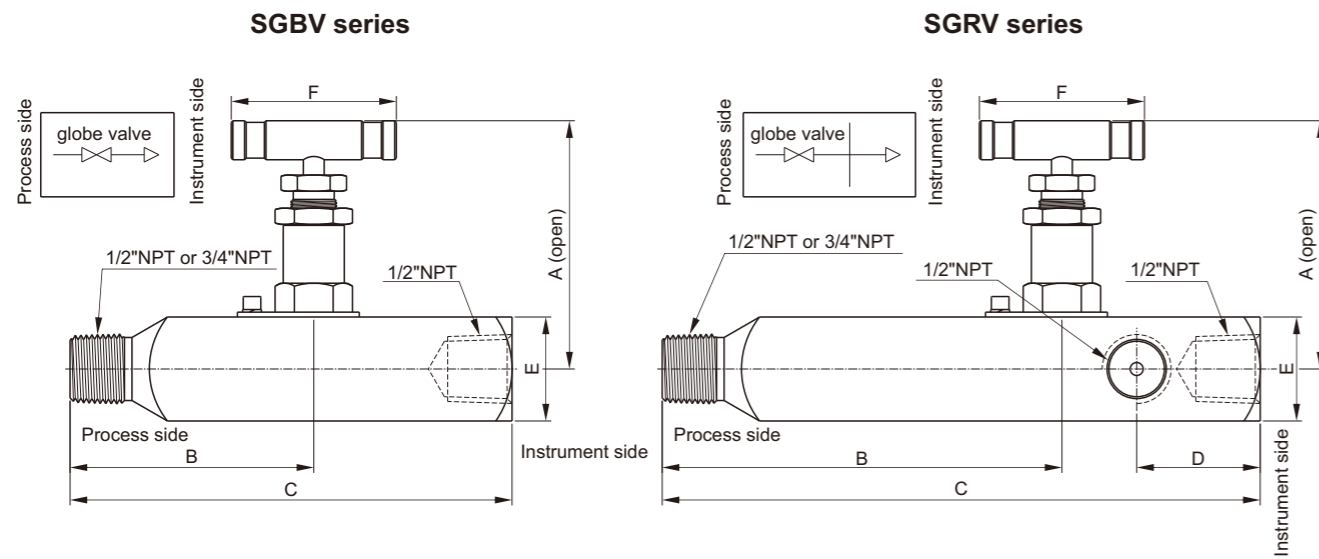


Table valve

feature

1. valve body material: stainless steel;
2. 1/2" and 3/4" male threaded ports to 1/2" female threaded ports;
3. The standard gauge valve port has a 1/2" female thread.

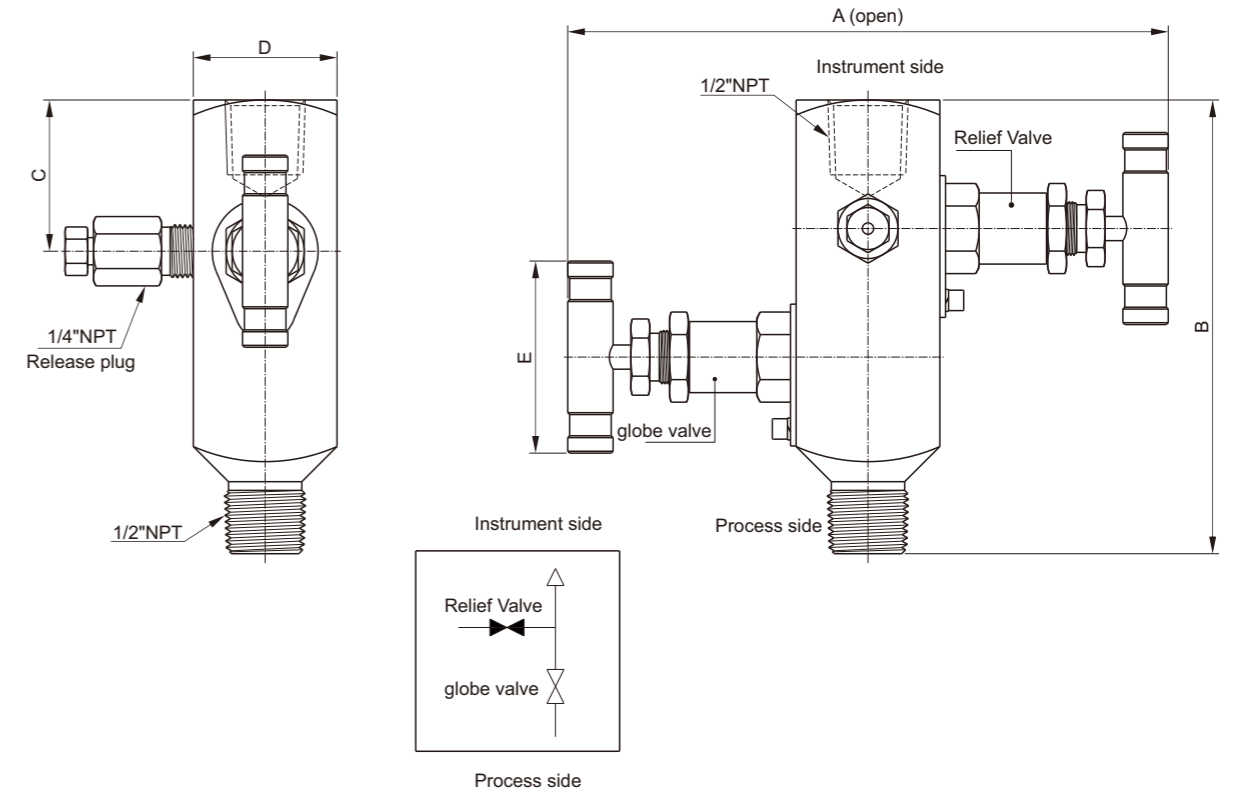
Table valve size



Model	Port type		size (mm)					
	Process port	Instrument port	A	B	C	D	E	F
SGBV-M8N-F8N	1/2"NPT male thread	1/2"NPT female thread	87	54	90	-	32	45
SGBV-M12N-F8N	3/4"NPT male thread	1/2"NPT female thread						
SGRV-M8N-F8N	1/2"NPT male thread	1/2"NPT female thread	87	75	136	38.1	32	45
SGRV-M12N-F8N	3/4"NPT male thread	1/2"NPT female thread						

To order a gauge valve with optional graphite packing, please add "- G" after the gauge valve model.

SGBV2 series



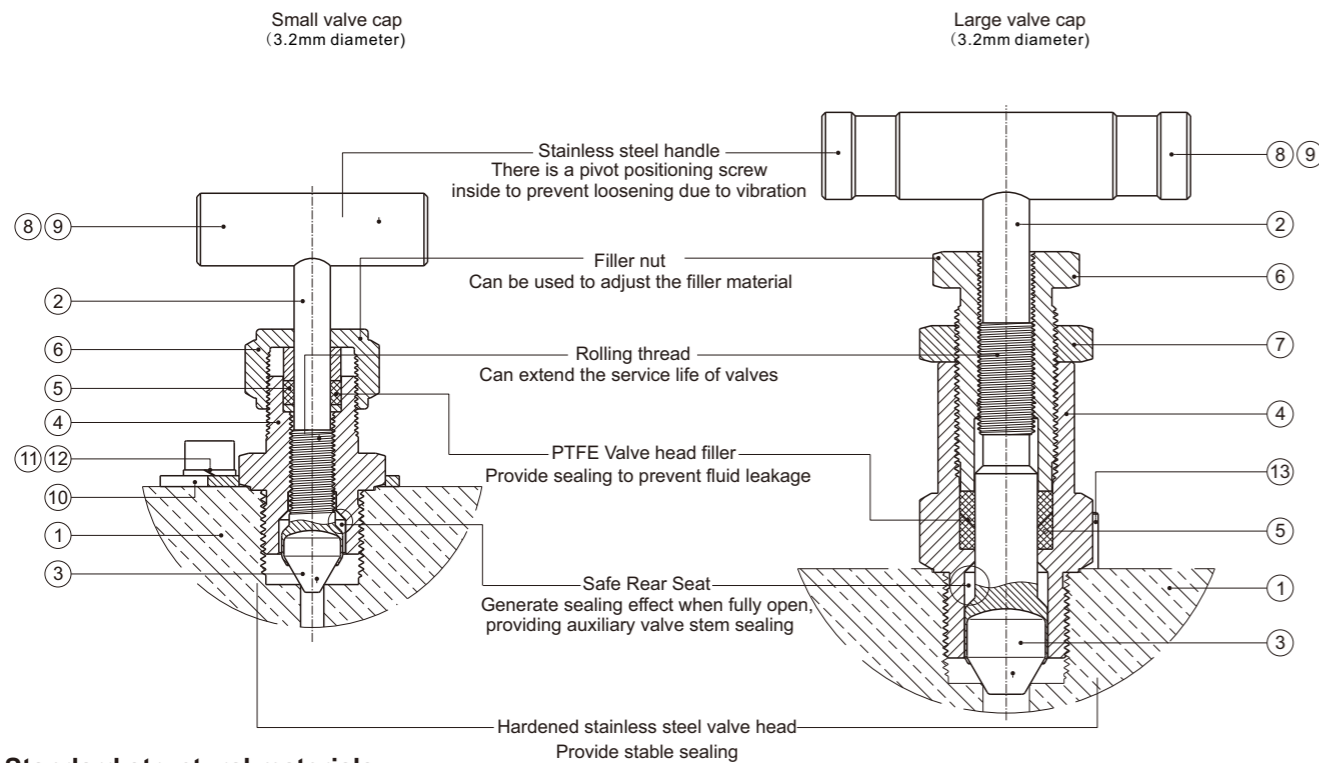
Model	Port type		size (mm)				
	Process port	Instrument port	A	B	C	D	E
SGBV2-M8N-F8N	1/2"NPT male thread	1/2"NPT female thread	142	120	40	38	45

To order a gauge valve with optional graphite packing, please add "- G" after the gauge valve model.

Instrument Manifolds

feature

1. There are 2, 3, and 5 valve groups to choose from;
2. Maximum working pressure: 6000psig(413bar)@100°F(37°C)
3. Working temperature range: up to 1200 ° F (648 ° C) @ graphite packing seal;
4. Full 316 stainless steel structure, PTFE packing seal (graphite packing optional).



Standard structural materials

Number	Component Name	Body Materia
1	valve body	316 stainless steel/A276orA479
2	valve stem	316 stainless steel/A276orA479
3	V-shaped valve head	hardening 316 stainless steel/A479
4	bonnet	316stainless steel/A276orA479
5	filler	PTFE
		Graphite (optional)
6	filler nut	316 stainless steel/A276orA479
7	locknut	316 stainless steel/A276orA479
8	handle	stainless steel
9	setscrew	stainless steel
10	lock plate	stainless steel
11	socket head cap screw	stainless steel
12	spring washer	stainless steel
13	stop pin	stainless steel

Diameter

3.2mm(0.125in.)	6.4mm(0.25in.)
2-valve group, shut-off valve and relief valve 5-valve group, balance valve and relief valve	3-valve group, cut-off valve and balance valve 5-valve group, shut-off valve

Pressure - Temperature Value

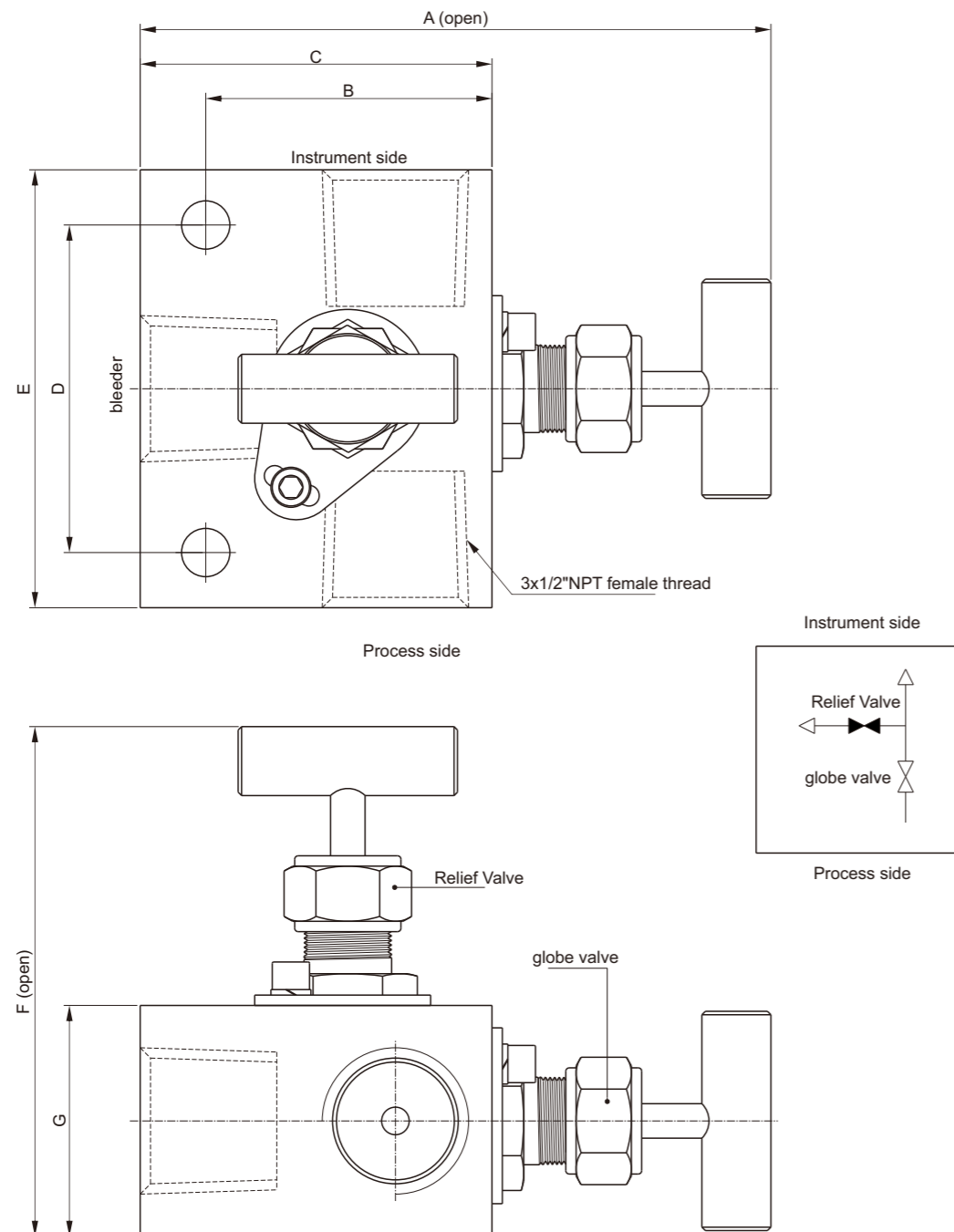
Body Materia	316 stainless steel	
	PTFE	graphite
Temperature, ° F (° C)	working pressure, psig(bar)	
100(37)	6000 (414)	6000 (413)
200(93)	5160 (355)	5160 (355)
250(121)	4910 (338)	4910 (338)
300(148)	4660 (321)	4660 (321)
350(176)	4470 (307)	4470 (307)
400(204)	4280 (294)	4280 (294)
450(232)	4130 (284)	4130 (284)
500(260)	-	3980 (274)
550(287)	-	3870 (266)
600(315)	-	3760 (259)
650(343)	-	3700 (254)
700(371)	-	3600 (248)
750(398)	-	3520 (242)
800(426)	-	3460 (235)
850(454)	-	3380 (232)
900(482)	-	3280 (225)
950(510)	-	3220 (221)
1000(537)	-	3030 (208)
1050(565)	-	3000 (206)
1100(593)	-	2685 (184)
1150(621)	-	2285 (157)
1200(648)	-	1715 (118)

Testing

Each valve group undergoes a nitrogen pressure test before leaving the factory to determine the maximum leakage rate 0.1std cm³/s.

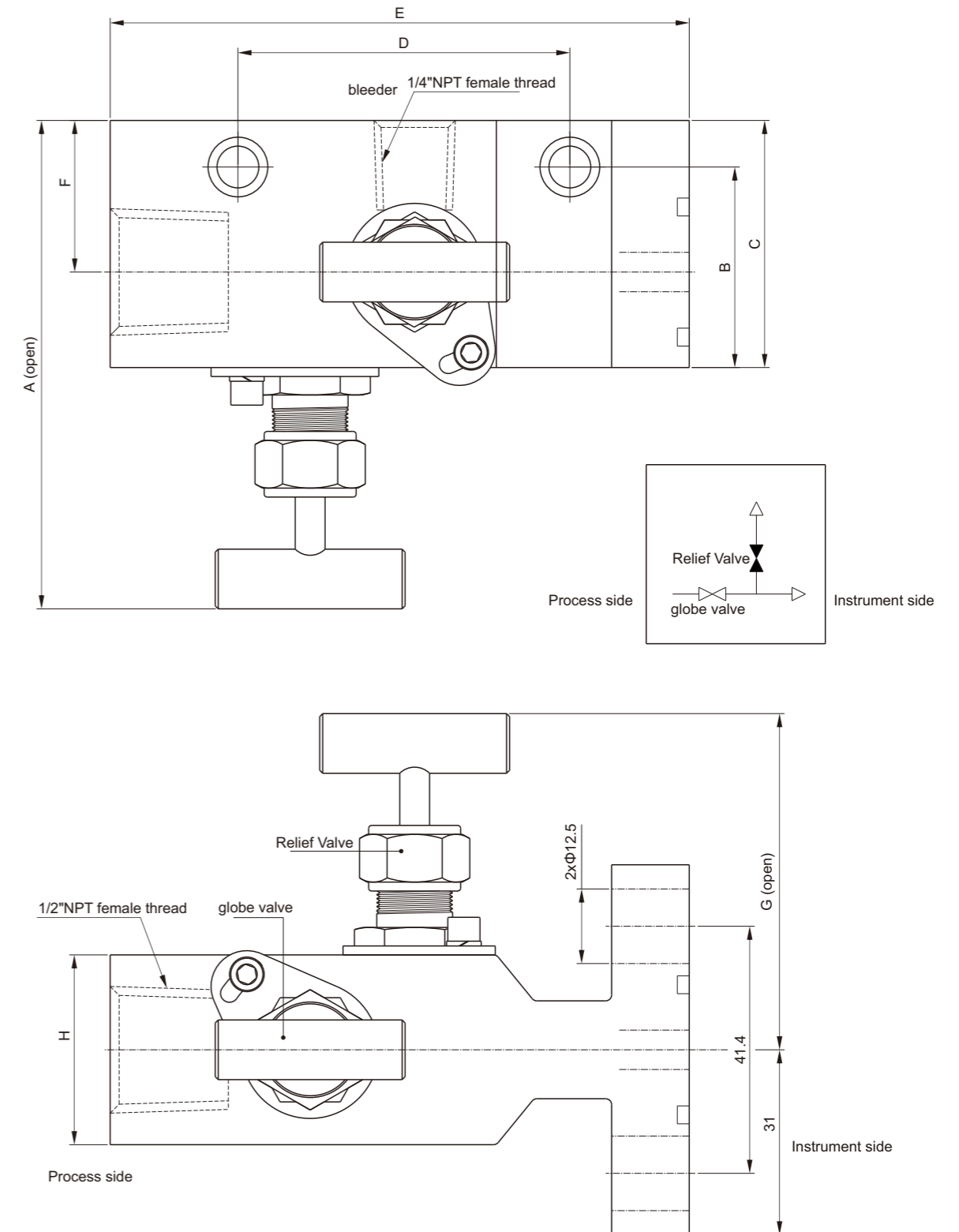
2-Valve group size table

Horizontal (remote installation)



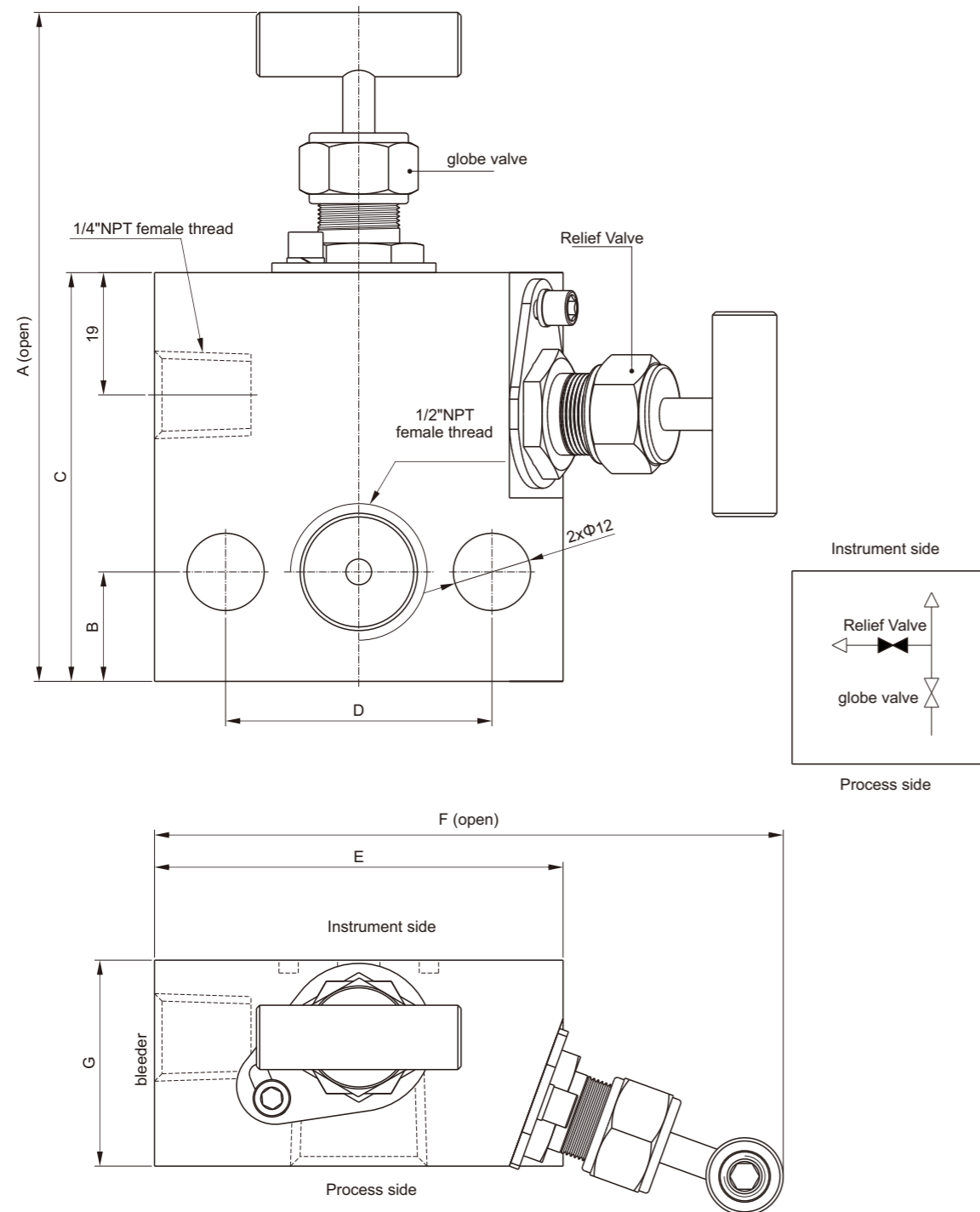
Model	Port type			size (mm)						
	process port	instrument port	bleeder	A	B	C	D	E	F	G
SM2V-F8N	1/2" NPT female thread			103.5	41.5	51	47.5	63.5	85.9	33.5

Horizontal single flange type (direct installation)



Model	Port type			size (mm)							
	process port	instrument port	bleeder	A	B	C	D	E	F	G	H
SM2VF-F8N	1/2" NPT female thread	flange	1/4" NPT female thread	93.8	33.6	41.4	47.8	97.0	25.4	69.0	31.8

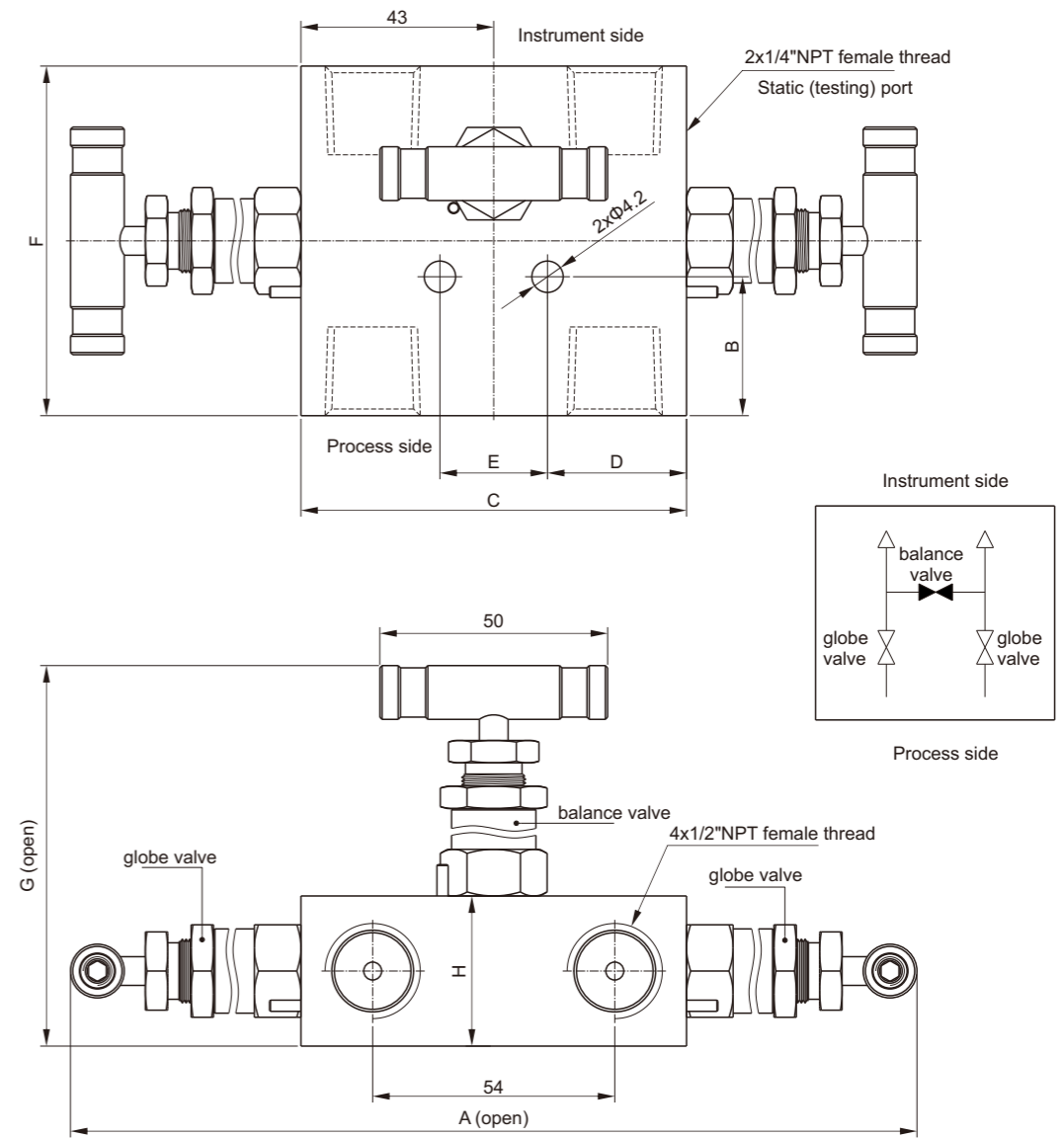
Vertical (direct installation)



Model	Port type			size (mm)						
	process port	instrument port	bleeder	A	B	C	D	E	F	G
SM2VD-F8N	1/2" NPT female thread	flange	1/4" NPT female thread	116.0	17.0	63.5	41.4	63.5	115.0	28.6

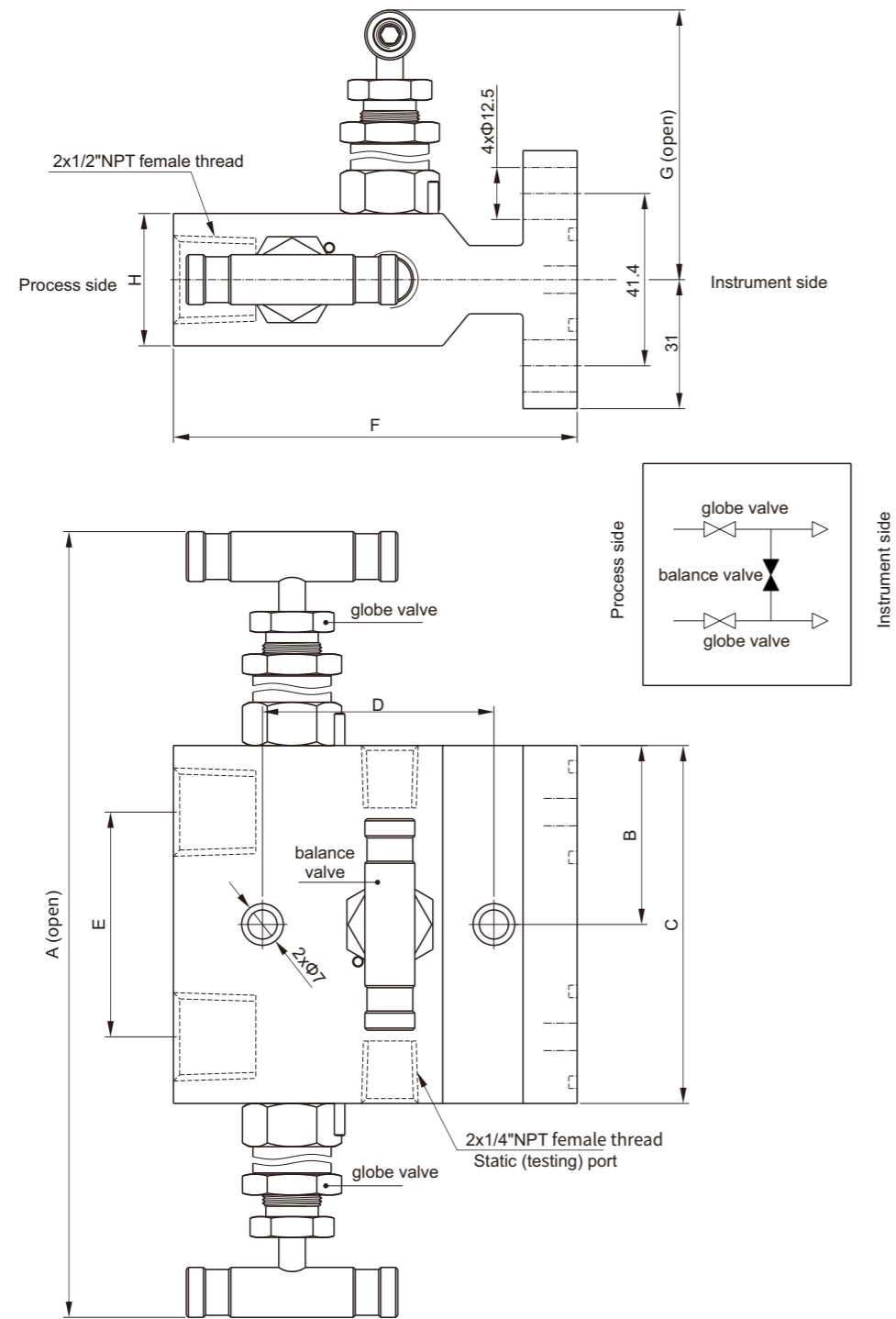
3-Valve group size table

Horizontal (remote installation)



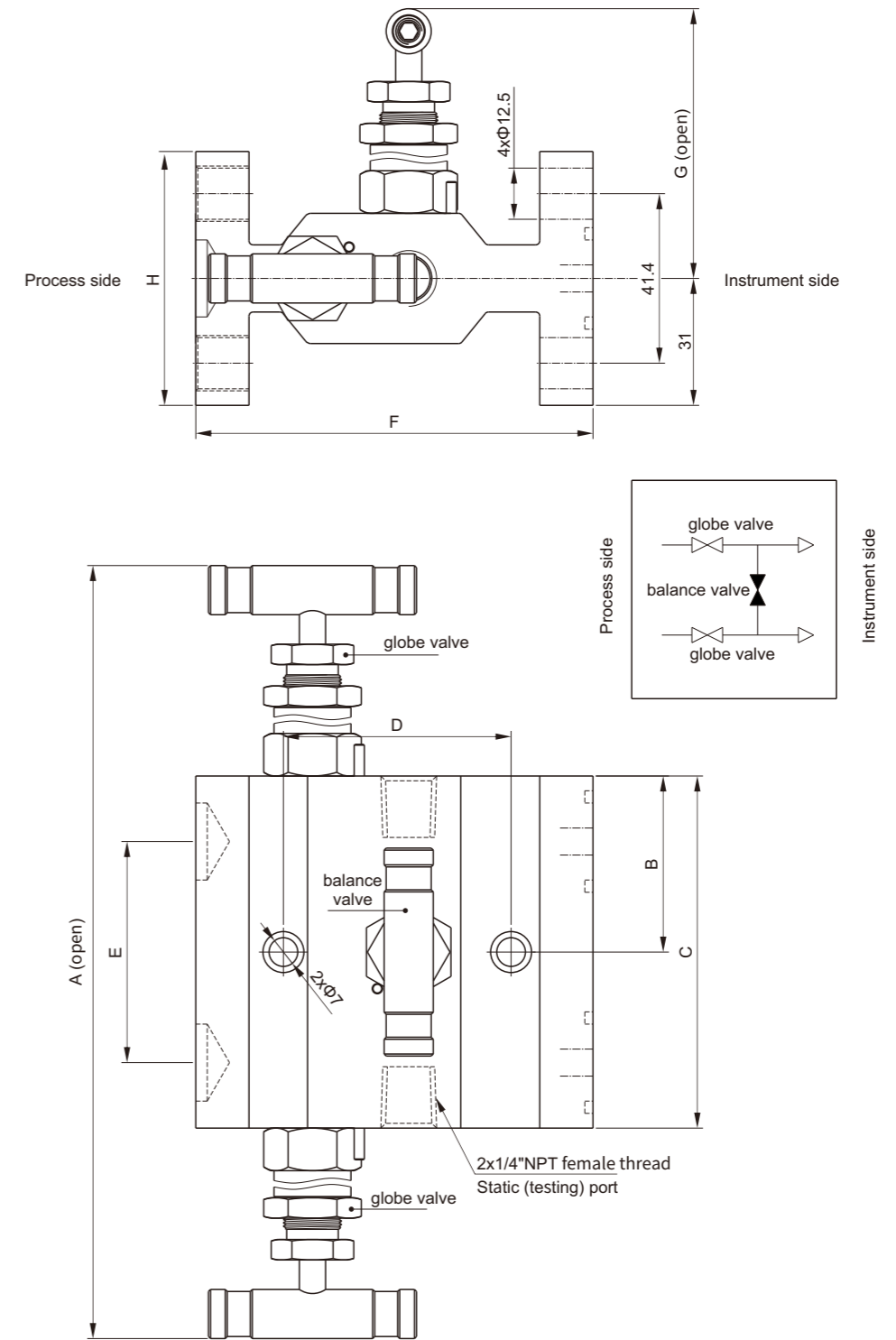
Model	Port type		size (mm)							
	Process port	Instrument port	A	B	C	D	E	F	G	H
SM3V-F8N	1/2" NPT female thread	1/2" NPT female thread	228.0	31.0	86.0	31.0	24.0	78.0	106.0	33.5

Horizontal single flange type (direct installation)



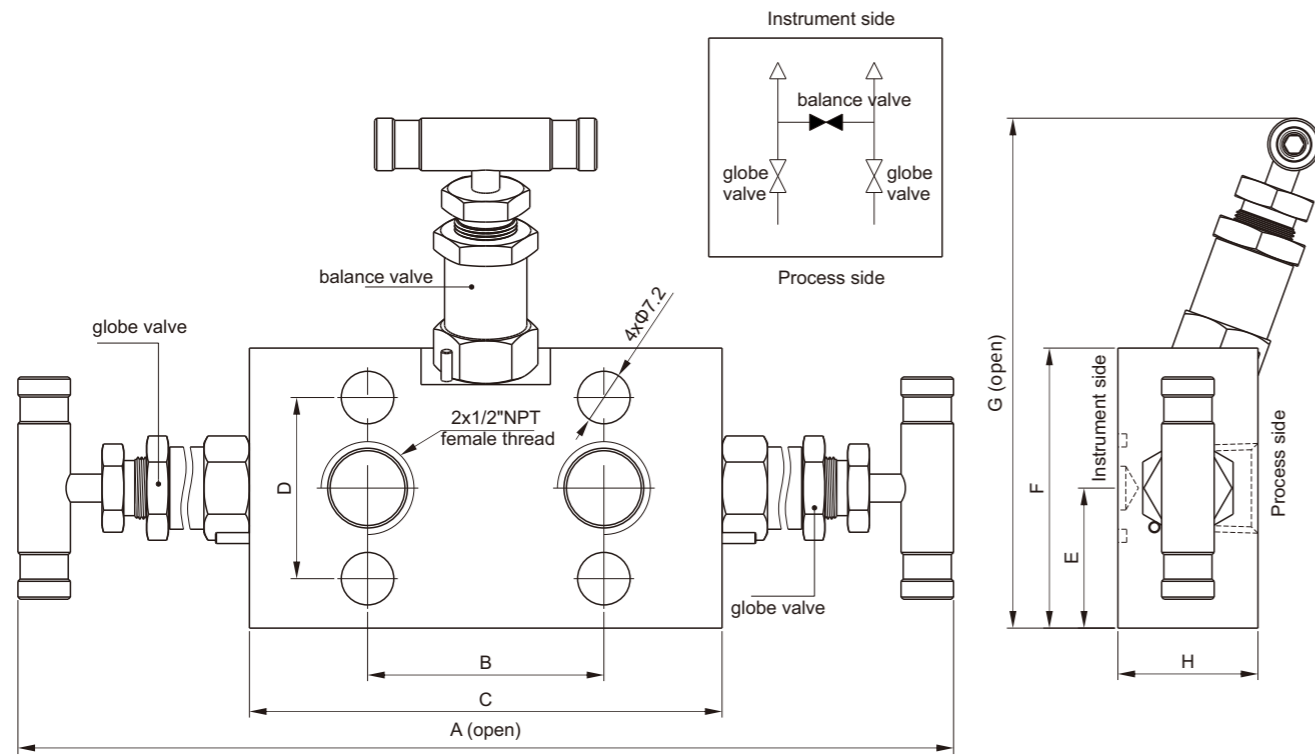
Model	Port type		size (mm)							
	process port	instrument port	A	B	C	D	E	F	G	H
SM3VF-F8N	1/2" NPT female thread	flange	228.0	43.0	86.0	55.6	54.0	97.0	87.7	31.8

Horizontal double flange type (direct installation)



Model	Port type		size (mm)							
	process port	instrument port	A	B	C	D	E	F	G	H
SM3VDF	flange	flange	228.0	43.0	86.0	55.6	54.0	96.4	87.7	62.0

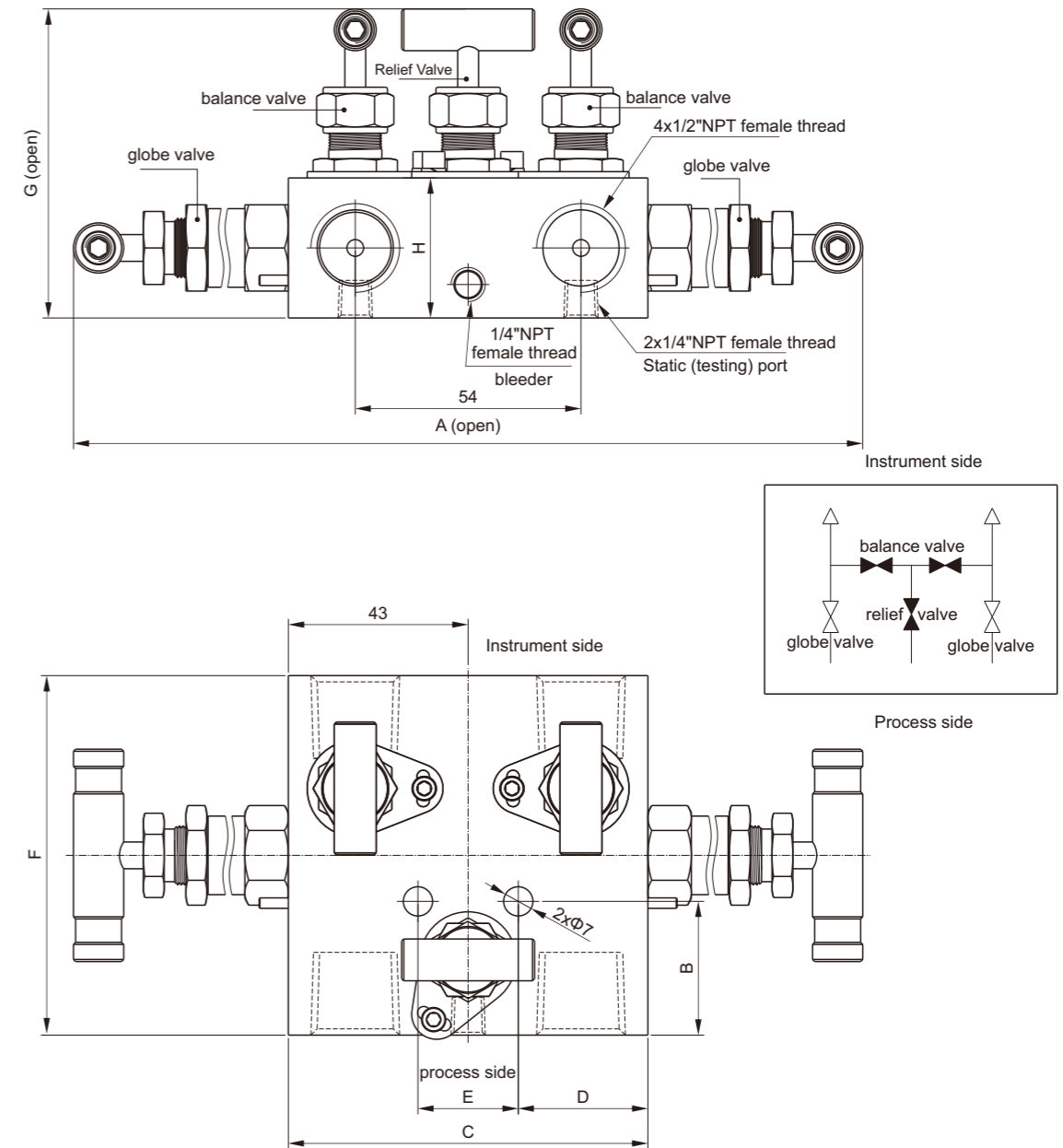
Vertical (direct installation)



Model	Port type		size (mm)							
	process port	instrument port	A	B	C	D	E	F	G	H
SM3VD-F8N	1/2" NPT female thread	flange	250.0	54.0	108.0	41.4	32.0	64.0	136.0	32.0

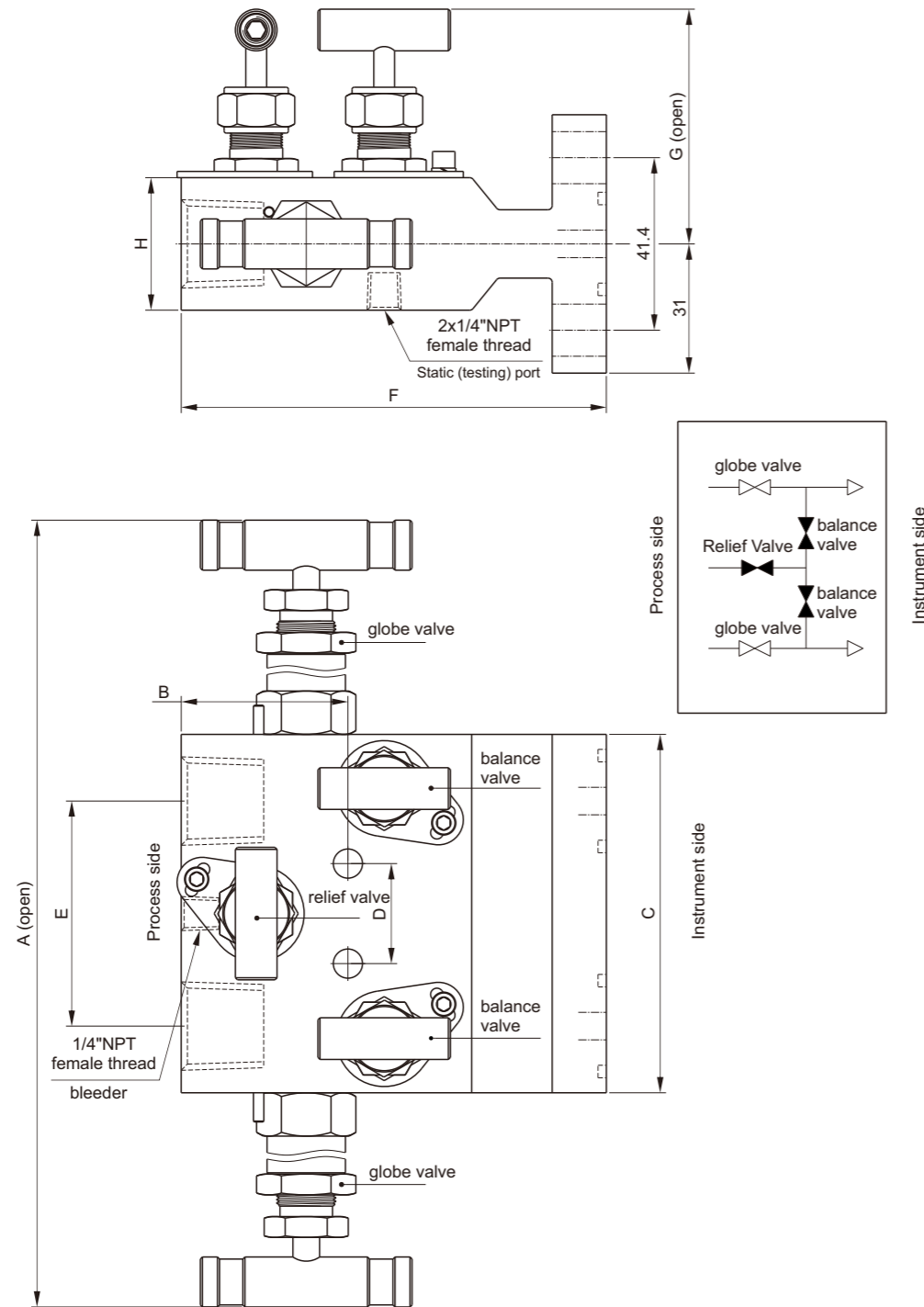
5-Valve group size table

Horizontal (remote installation)



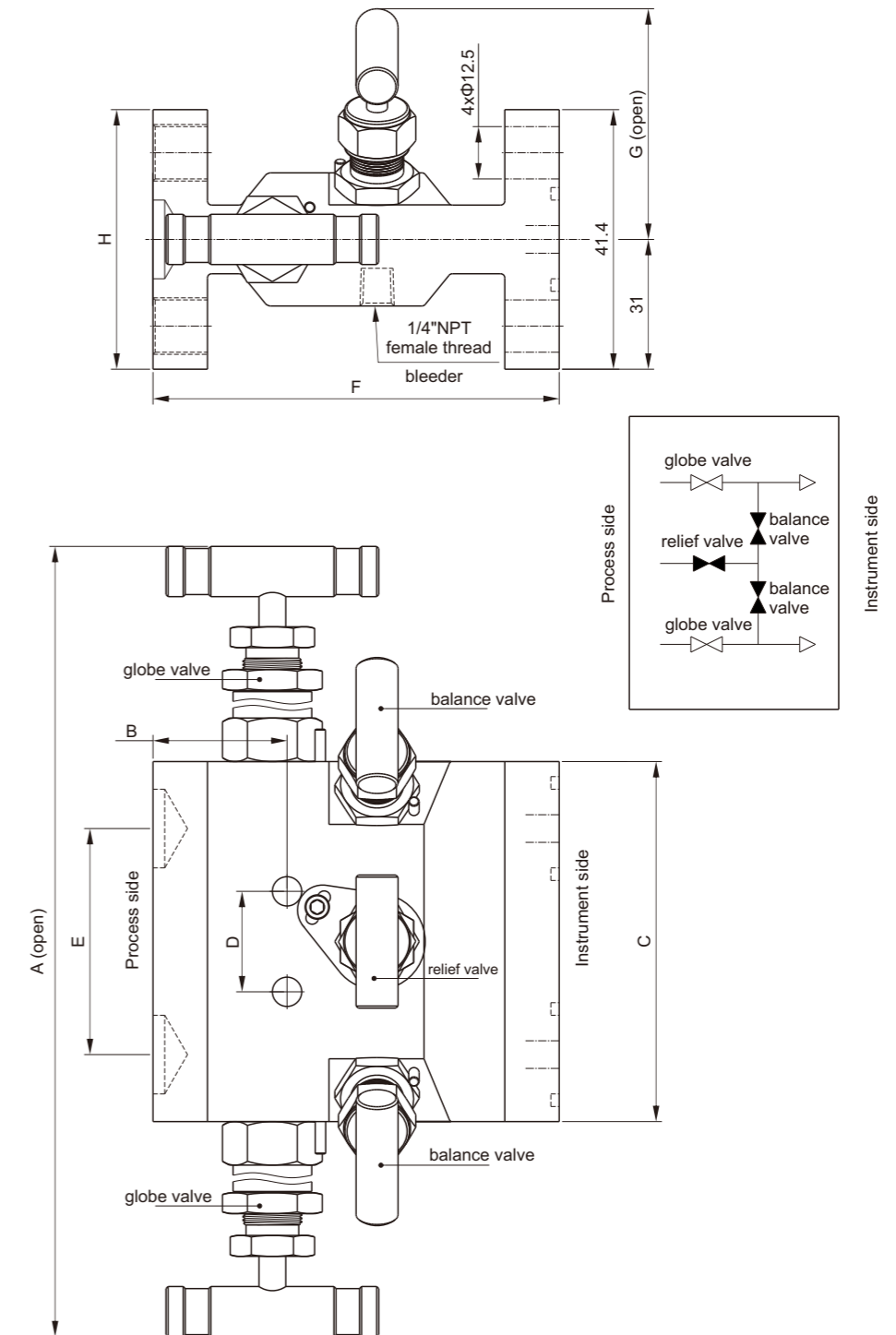
Model	Port type			size (mm)							
	process port	instrument port	bleeder	A	B	C	D	E	F	G	H
SM5V-F8N	1/2" NPT female thread	1/4" NPT female thread	1/4" NPT female thread	228.0	32.0	86.0	31.0	24.0	86.0	85.9	33.5

Horizontal single flange type (direct installation)



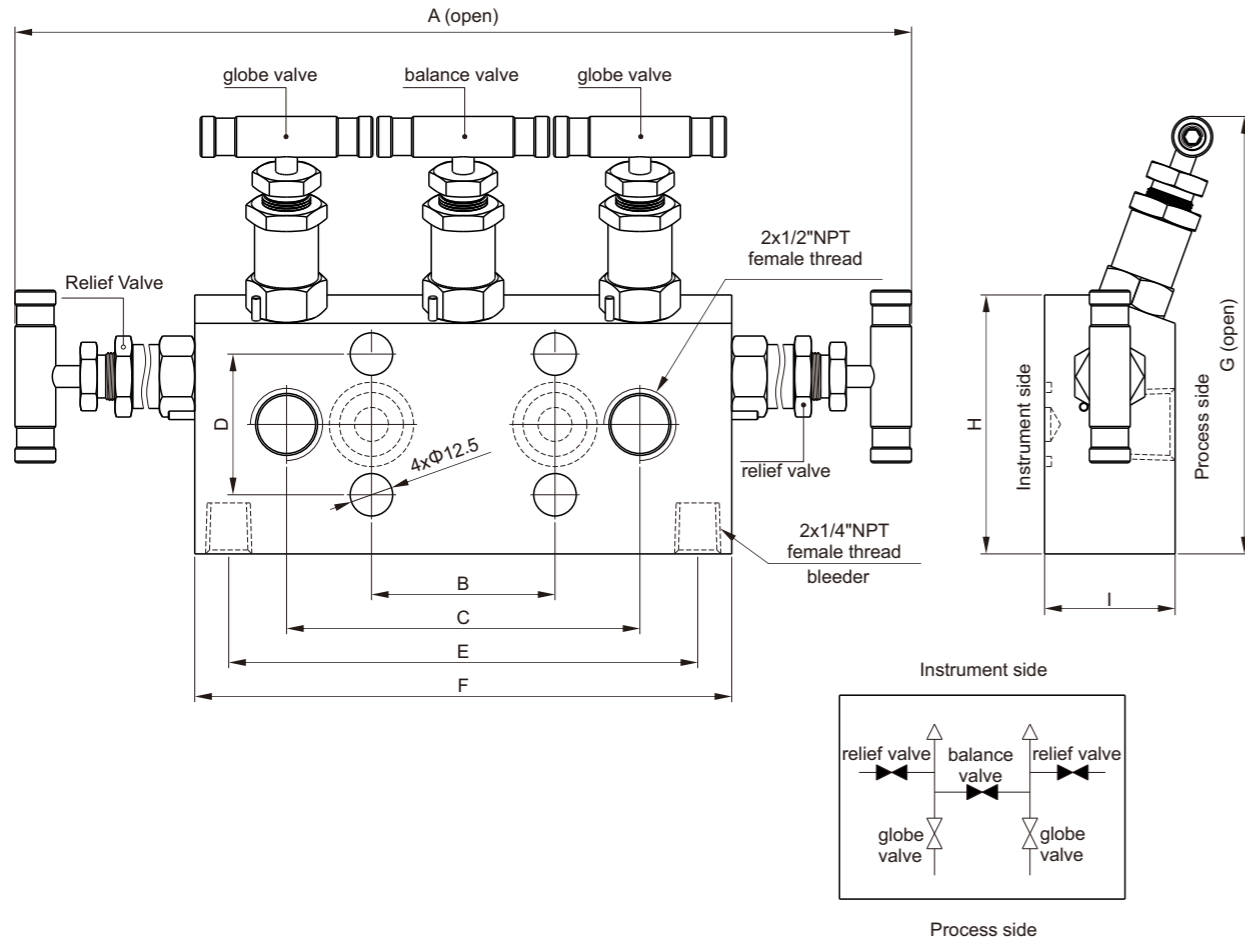
Model	Port type			size (mm)							
	process port	instrument port	bleeder	A	B	C	D	E	F	G	H
SM5VF-F8N	1/2" NPT female thread	flange	1/4" NPT female thread	228.0	40.0	86.0	24.0	54.0	102.0	69.0	31.8

Horizontal double flange type (direct installation)



Model	Port type			size (mm)							
	process port	instrument port	bleeder	A	B	C	D	E	F	G	H
SM5VDF-F8N	flange	flange	1/4" NPT female thread	228.0	32.0	86.0	24.0	54.0	97.0	69.0	62.0

Vertical (direct installation)



Model	Port type			size (mm)								
	process port	instrument port	bleeder	A	B	C	D	E	F	G	H	I
SM5VD-F8N	1/2" NPT female thread	flange	1/4" NPT female thread	312.0	54.0	102.0	41.4	138.0	158.0	148.0	76.2	32.0

Flange bolts and seals

flange bolt

Model	Flange bolt	Hexagonal spec mm(in.)	length mm(in.)	Thread Spec	Bolt code name
SM-FB	standard hexagonal head bolt	15.87(5/8)	25.0 (1.0)	7/16-20	stainless steel:-SS carbon steel:-CS
SM-LFB	Long bolt with hexagonal nut		58.0 (2.28)		
SM-SFB	Short bolt with hexagonal nut		22.2 (0.875)		

Flange seals

Model	Sealing material	Working temperature range
SM-FS-V	Viton	-20°F to 450°F(-28°C to 232°C)
SM-FS	PTFE	-65°F to 250°F(-53°C to 121°C)
SM-FS-GR	graphite	-65°F to 1000°F(-53°C to 537°C)

Concentric&Eccentric Elliptical Flanges

The eccentric flange and eccentric pipe joint can be connected to the process flange or process root valve;

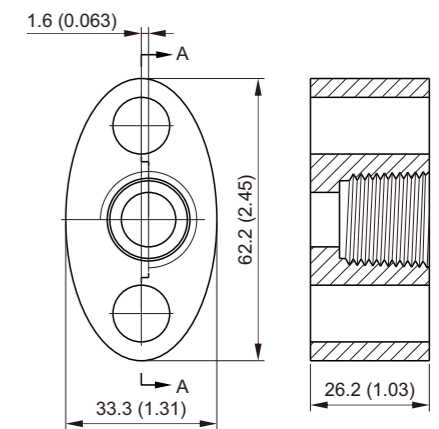
1/2 "NPT female thread is the standard connection;

Same center/partial center elliptical flange product model:

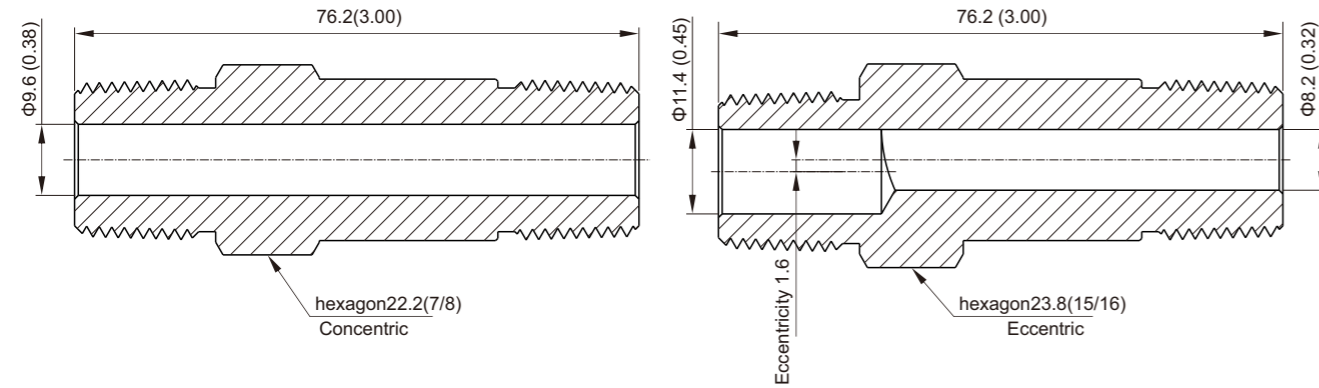
1/2 "NPT female threaded concentric elliptical flange: SM-COF-F8N

1/2 "NPT female thread eccentric elliptical flange: SM-EOF-F8N

The unit of measurement is millimeter (in English), for reference only, and may vary.

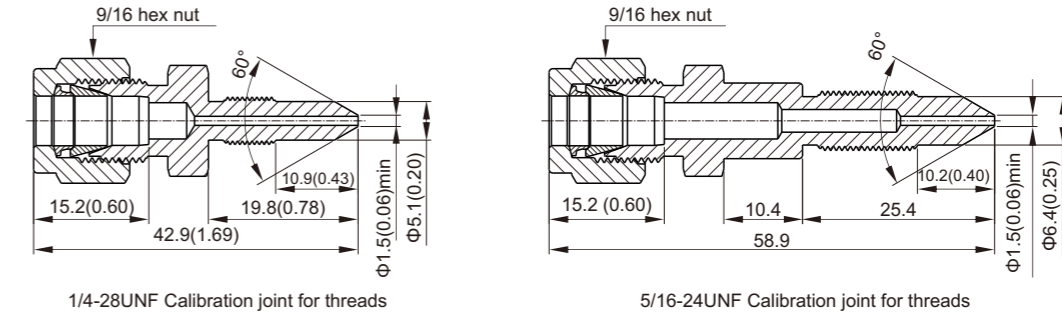


Concentric&Eccentric threaded joints



Type	Model	Material	Work pressure @ 70 ° F (20 ° C)psig(bar)	Temperature Range	Work pressure @ max working temperature
Concentric	SM-CPN-SS	stainless steel/A276	10000 (689)	-65°F to 1200°F (-53°C to 648°C)	2850 psig @ 1200°F (196 bar @ 648°C)
	SM-CPN-CS	carbon steel/A108	8000 (551)	-20°F to 350°F (-28°C to 176°C)	6970 psig @ 350°F (480 bar @ 176°C)
Eccentric	SM-EPN-SS	stainless steel/A276	7500 (516)	-65°F to 1200°F (-53°C to 648°C)	2850 psig @ 1200°F (147 bar @ 648°C)
	SM-EPN-CS	carbon steel/A108	6000 (413)	-20°F to 350°F (-28°C to 176°C)	5230 psig @ 350°F (360 bar @ 176°C)

Calibration connector



Model	Material	GBO-LOK Tube outer diameter	Parallel male thread
SCAL4-4U	stainless steel/A276	1/4"	1/4-28UNF
SCAL4-5U			5/16-24UNF

Release plug, release valve, cleaning valve

1. Relief valves and purge valves are used to release the medium into the atmosphere and assist in calibration;
2. Available in 1/4 ", 3/8", and 1/2 "NPT male thread specifications;
3. For more information, please refer to the GBO-LOK release valve and cleaning valve catalog (SBLV, SPUV series);
4. The unit of measurement is one millimeter (in English), for reference only, and may vary.