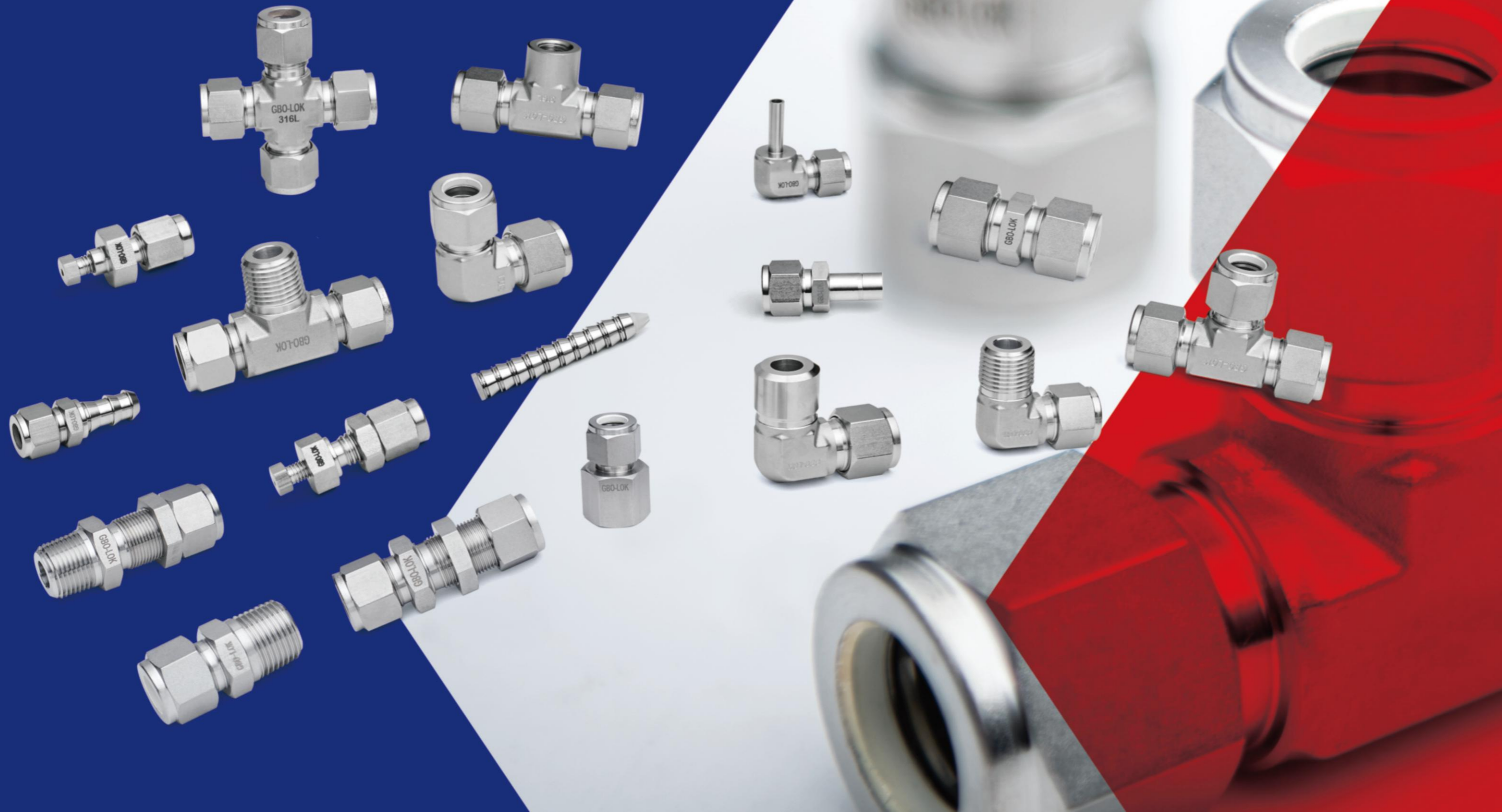


Double Card Sleeve Connector

GBO.LOK®

Feature

1. Multiple materials and forms to choose from.
2. Size range: 1/16" to 2", 2mm to 50mm.
3. High precision machining of parts ensures precise deformation of card sleeves and pipes.
4. The hardened and polished threads extend the life of the joint and avoid the biting of male and female threads.
5. Silver plating on nut threads can effectively reduce the friction coefficient with the body threads.
6. The curved transition of the elbow pipe ensures smooth fluid flow and reduces channel resistance.
7. Easy joint fastening and reinstallation.

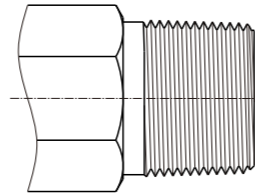


Threaded end technical data

NPT thread (NPT)

Following standards: ASME B1.20.1, SAE As71051

Dental angle 60 °
 Measure the pitch in inches, the cross-section of the tooth base and crown is flat, and the taper is 1:16
 Sealing type: thread sealant or raw tape



Thread Parameters

Thread Size	number of teeth per inch	diameter on the reference plane(mm)			Manual rotation length	
		large diameter	middle diameter	small diameter	mm	Threads per inch
1/16	27	7.894	7.142	6.389	4.064	4.32
1/8		10.242	9.489	8.737	4.102	4.36
1/4	18	13.616	12.487	11.358	5.785	4.10
3/8		17.055	15.926	14.797	6.096	4.32
1/2	14	21.224	19.772	18.321	8.128	4.48
3/4		26.569	25.117	23.666	8.618	4.75
1	11.5	33.228	31.461	29.694	10.160	4.60
1-1/4		41.985	40.218	38.451	10.668	4.83
1-1/2		48.054	46.287	44.520	10.668	4.83
2		60.092	58.325	56.558	11.065	5.01

NPT thread end working pressure

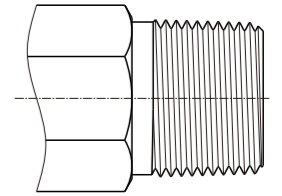
Thread Size	316 stainless steel				brass			
	male thread		female thread		male thread		female thread	
	psig	bar	psig	bar	psig	bar	psig	bar
1/16	11000	757	6700	460	5500	378	3300	227
1/8	10000	690	6500	447	5000	344	3200	220
1/4	8000	551	6600	454	4000	275	3300	227
3/8	7800	537	5300	365	3900	268	2600	179
1/2	7700	530	4900	337	3800	261	2400	165
3/4	7300	502	4600	316	3600	248	2300	158
1	5300	365	4400	303	2600	179	2200	151
1-1/4	6000	410	5000	344	3000	200	2500	172
1-1/2	5000	344	4600	317	2500	172	2300	158
2	3900	268	3900	268	1900	130	1900	130

The work pressure is based on ANSI/ASME B31.3 at ambient temperature

ISO taper thread(R, R1, R2, RC, RT, PT, BSPT, ZG)

Following standards:ISO 7-1, EN 10226-1, BS 21, DIN 2999, JIS B0203

Dental angle 55 °
 Measure the pitch in inches, and the cross-section of the tooth base and crest is a circular arc with a taper of 1:16
 Sealing type: thread sealant or raw tape



Thread Parameters

Thread Size	number of teeth per inch	diameter on the reference plane(mm)			Manual rotation length	
		large diameter	middle diameter	small diameter	mm	Threads per inch
1/16	28	7.723	7.142	6.561	4.0	4.4
1/8		9.728	9.147	8.566	4.0	4.4
1/4	19	13.157	12.301	11.445	6.0	4.5
3/8		16.662	15.806	14.950	6.4	4.8
1/2	14	20.955	19.793	18.631	8.2	4.5
3/4		26.441	25.279	24.117	9.5	5.2
1	11	33.249	31.770	30.291	10.4	4.5
1-1/4		41.910	40.431	38.952	12.7	5.5
1-1/2		47.803	46.324	44.845	12.7	5.5
2		59.614	58.135	56.656	15.9	6.9

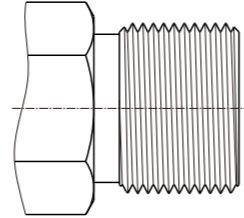
The working pressure of ISO taper thread end is equivalent to that of NPT thread end

ISO Parallel thread(G,RP, PF, BSPP)

Following standards: ISO 228-1, DIN ISO 228-1, JIS B0202, BS 2779

Dental angle 55 °

Measure the pitch in inches, and the cross-section of the tooth base and crest is a circular arc



Thread Parameters

Thread Size	number of teeth per inch	basic diameter(mm)		
		large diameter	middle diameter	small diameter
1/16	28	7.723	7.142	6.561
1/8		9.728	9.147	8.566
1/4	19	13.157	12.301	11.445
3/8		16.662	15.806	14.950
1/2	14	20.955	19.793	18.631
5/8		22.911	21.749	20.587
3/4		26.441	25.279	24.117
7/8		30.201	29.039	27.877
1	11	33.249	31.770	30.291
1-1/8		37.897	36.418	34.939
1-1/4		41.910	40.431	38.952
1-1/2		47.803	46.324	44.845
1-3/4		53.746	52.267	50.788
2		59.614	58.135	56.656

Installation instructions for card sleeve connector

1 "or 25mm and below card sleeve joint

Initial installation

1. Loosen the nut by 1/4 turn from the hand tight position;
2. Insert the tube into the sleeve connector, ensuring that the tube is pressed against the shoulder of the port;
3. Tighten the nut by hand;
4. Secure the body of the joint or valve firmly, use a wrench to tighten the nut 1-1/4 turn (Figure 1).
For small-sized joints (1/16", 1/8", and 3/16", 2mm, 3mm, and 4mm), use a wrench to tighten the nut 3/4 turn (Figure 2).

Reinstall

1. Before disassembling the joint, mark the pipe along the back of the nut; Draw a line on the plane of the nut and joint body;
2. Insert the card sleeve and tube assembly into the body until the front card sleeve is pressed against the joint body;
3. Securely fix the joint body and use a wrench to rotate the nut to the previously tightened position indicated by the markings on the pipe, nut, and body plane;
4. Gently tighten the nut.

Card sleeve joint larger than 1 "or 25mm

Initial installation

1. Install the card sleeve onto the Tube using a pre installation tool. For specific details, please refer to the instructions of each manufacturer's pre installation tool;
2. Insert the Tube with a sleeve and nut into the body of the joint, and tighten the nut by hand;
3. Tighten the nut 1/2 turn with a wrench.

Reinstall

The reassembly method is the same as that of card sleeve connectors with a diameter of 1 or 25mm or less.

Blocking head

Initial installation

Firmly fix the body of the joint and tighten the plug 14 times starting from the hand tight position. For small-sized joints (1/16", 1/8", and 3/16", 2mm, 3mm, and 4mm), use a wrench to tighten the nut 1/8 turn.

Reinstall

Starting from the tight position, use a wrench to slightly tighten.

Port joint

The initial installation and reinstallation of the tube end are the same as those of the sleeve joint, while the initial installation and reinstallation of non tube ends are the same as those of the plug.

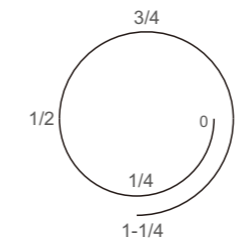


Figure 1

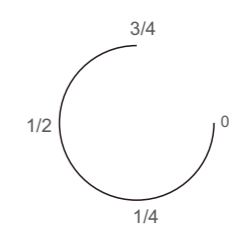
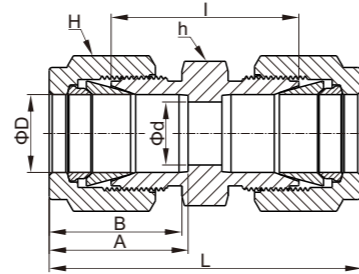


Figure 2

Warning

1. Do not loosen or tighten the joints when the system is under pressure;
2. Ensure that the Tube is placed on the shoulder of the port during installation;
3. The tube end used for card sleeve joints should have a sufficiently long straight end;
4. For very soft plastic Tubes, a hose plug should be used;
5. The material of the tube should always be softer than the clamp joint. For example, brass sleeve fittings cannot be used for stainless steel Tube pipes.
When the material of the tube and the sleeve joint are the same, the tube must undergo complete annealing;
6. Ensure that the end face and surface of the Tube are clean, smooth, and even;
7. Always use appropriate thread sealant on the taper pipe thread to ensure that the working temperature does not exceed the temperature at which the sealant is used;
8. When installing the card sleeve connector, use a wrench to fix the rotating nut of the body instead of fixing the nut to rotate the body;
9. When the sleeve end is used on the valve, the valve body should be fixed and the nut should be rotated;
10. When the sleeve joint is threaded with the valve, the valve body should be fixed and the sleeve joint body should be rotated.

SU
card sleeve straight Joint



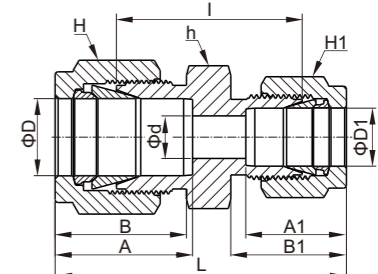
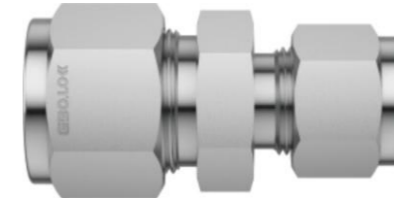
British Tube

Model	D-Tube outside diameter (in.)	hexagonal width(in.)		size(mm)								
		h	H	d-min diameter	A	B	I	L				
SU-1	1/16	5/16	5/16	1.27	8.63	10.92	17.52	25.15				
SU-2	1/8	7/16	7/16	2.28	12.70	15.24	22.35	35.56				
SU-3	3/16	7/16	1/2	3.04	13.71	16.00	24.13	37.33				
SU-4	1/4	1/2	9/16	4.82	15.24	17.78	26.16	40.89				
SU-5	5/16	9/16	5/8	6.35	16.25	18.54	28.19	42.92				
SU-6	3/8	5/8	11/16	7.11	16.76	19.30	30.22	44.95				
SU-8	1/2	13/16	7/8	10.41	22.86	21.84	30.98	51.30				
SU-10	5/8	15/16	1	12.70	24.38	21.84	31.75	52.07				
SU-12	3/4	1-1/16	1-1/8	15.74	24.38	21.84	33.27	53.59				
SU-14	7/8	1-3/16	1-1/4	18.28	25.90	21.84	34.79	55.11				
SU-16	1	1-3/8	1-1/2	22.35	31.24	26.41	40.38	64.77				
SU-20	1-1/4	1-3/4	1-7/8	27.69	41.15	38.86	48.00	92.20				
SU-24	1-1/2	2-1/8	2-1/4	34.04	50.04	45.21	53.59	107.95				
SU-32	2	2-3/4	3	45.97	67.56	62.74	74.68	149.35				

Metric Tube

Model	D-Tube outside diameter (mm)	hexagonal width(mm)		size(mm)								
		h	H	d-min diameter	A	B	I	L				
SU-2M	2	12	12	1.7	12.9	15.3	22.4	35.6				
SU-3M	3	12	12	2.4	12.9	15.3	22.1	35.3				
SU-4M	4	12	12	2.4	13.7	16.1	24.1	37.3				
SU-6M	6	14	14	4.8	15.3	17.7	26.2	41.0				
SU-8M	8	15	16	6.4	16.2	18.6	28.2	43.2				
SU-10M	10	18	19	7.9	17.2	19.5	31.0	46.2				
SU-12M	12	22	22	9.5	22.8	22.0	31.0	51.2				
SU-15M	15	24	25	11.9	24.4	22.0	31.8	52.0				
SU-16M	16	24	25	12.7	24.4	22.0	31.8	52.0				
SU-18M	18	27	30	15.1	24.4	22.0	33.3	53.5				
SU-20M	20	30	32	15.9	26.0	22.0	34.8	55.0				
SU-22M	22	30	32	18.3	26.0	22.0	34.8	55.0				
SU-25M	25	35	38	21.8	31.3	26.5	40.4	65.0				

SRU
card sleeve direct variable diameter Joint



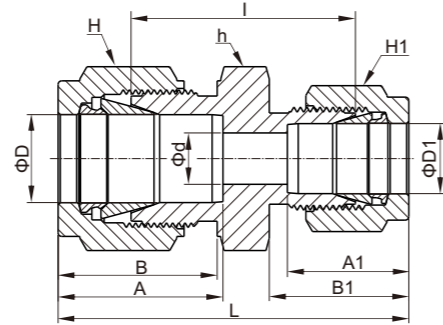
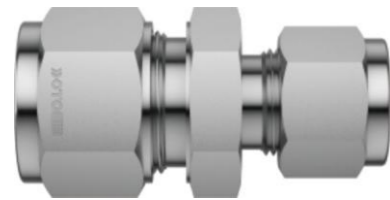
British Tube

Model	D-Tube outside diameter (in.)	D1-Tube outside diameter (in.)	hexagonal width(in.)			size(mm)						
			h	H	H1	d-min diameter	A	A1	B	B1	I	L
SRU-2-1	1/8	1/16	7/16	7/16	5/16	1.27	12.70	8.63	15.24	10.92	20.60	31.00
SRU-3-2	3/16	1/8	7/16	1/2	7/16	2.28	13.71	12.70	16.00	15.24	23.36	36.57
SRU-4-2	1/4	1/8	1/2	9/16	7/16	2.28	15.24	12.70	17.78	15.24	24.63	38.60
SRU-4-3	1/4	3/16	1/2	9/16	1/2	3.04	15.24	13.71	17.78	16.00	25.40	39.37
SRU-5-2	5/16	1/8	9/16	5/8	7/16	2.28	16.25	12.70	18.54	15.24	25.90	39.87
SRU-5-4	5/16	1/4	9/16	5/8	9/16	4.82	16.25	15.24	18.54	17.78	27.43	42.16
SRU-6-2	3/8	1/8	5/8	11/16	7/16	2.28	16.76	12.70	19.30	15.24	26.92	40.89
SRU-6-4	3/8	1/4	5/8	11/16	9/16	4.82	16.76	15.24	19.30	17.78	28.44	43.18
SRU-6-5	3/8	5/16	5/8	11/16	5/8	6.35	16.76	16.25	19.30	18.54	29.46	44.19
SRU-8-2	1/2	1/8	13/16	7/8	7/16	2.28	22.86	12.70	21.84	15.24	28.44	45.21
SRU-8-4	1/2	1/4	13/16	7/8	9/16	4.82	22.86	15.24	21.84	17.78	29.46	46.99
SRU-8-6	1/2	3/8	13/16	7/8	11/16	7.11	22.86	16.76	21.84	19.30	30.98	48.51
SRU-10-6	5/8	3/8	15/16	1	11/16	7.11	24.38	16.76	21.84	19.30	31.75	49.27
SRU-10-8	5/8	1/2	15/16	1	7/8	10.41	24.38	22.86	21.84	21.84	31.75	52.07
SRU-12-4	3/4	1/4	1-1/16	1-1/8	9/16	4.82	24.38	15.24	21.84	17.78	31.75	49.27
SRU-12-6	3/4	3/8	1-1/16	1-1/8	11/16	7.11	24.38	16.76	21.84	19.30	33.27	50.80
SRU-12-8	3/4	1/2	1-1/16	1-1/8	7/8	10.41	24.38	22.86	21.84	21.84	33.27	53.59
SRU-12-10	3/4	5/8	1-1/16	1-1/8	1	12.70	24.38	24.38	21.84	21.84	33.27	53.59
SRU-16-8	1	1/2	1-3/8	1-1/2	7/8	10.41	31.24	22.86	26.41	21.84	39.50	63.24
SRU-16-12	1	3/4	1-3/8	1-1/2	1-1/8	15.74	31.24	24.38	26.41	21.84	39.00	62.73

Metric Tube

Model	D-Tube outside diameter (mm)	D1-Tube outside diameter (mm)	hexagonal width(mm)			size(mm)						
			h	H	H1	d-min diameter	A	A1	B	B1	I	L
SRU-6M-3M	6	3	14	14	12	2.4	15.3	12.9	17.7	15.3	24.6	38.6
SRU-6M-4M	6	4	14	14	12	2.4	15.3	13.7	17.7	16.1	25.4	39.4
SRU-8M-6M	8	6	15	16	14	4.8	16.2	15.3	18.6	17.7	27.4	42.3
SRU-10M-6M	10	6	18	19	14	4.8	17.2	15.3	19.5	17.7	29.5	44.5
SRU-10M-8M	10	8	18	19	16	6.4	17.2	16.2	19.5	18.6	30.0	45.1
SRU-12M-6M	12	6	22	22	14	4.8	22.8	15.3	22.0	17.7	29.5	47.0
SRU-12M-8M	12	8	22	22	16	6.4	22.8	16.2	22.0	18.6	30.2	47.8
SRU-12M-10M	12	10	22	22	19	7.9	22.8	17.2	22.0	19.5	31.0	48.7
SRU-16M-12M	16	12	24	25	22	9.5	24.4	22.8	22.0	22.0	31.8	52.0
SRU-25M-18M	25	18	35	38	30	15.1	31.3	24.4	26.5	22.0	38.6	61.0
SRU-25M-20M	25	20	35	38	32	15.9	31.3	26.0	26.5	22.0	39.9	62.3

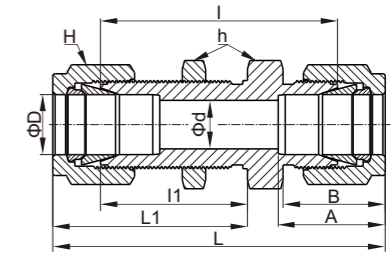
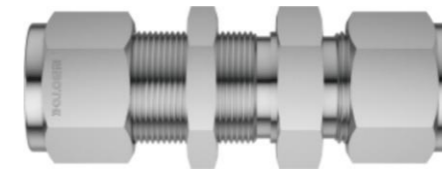
SRU
card sleeve direct variable diameter Joint



Metric Tube—British Tube

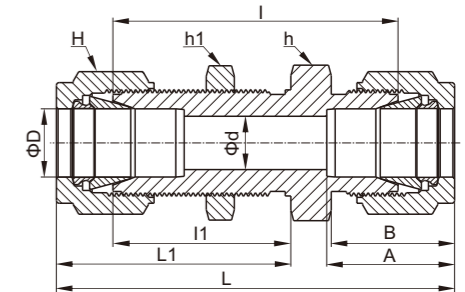
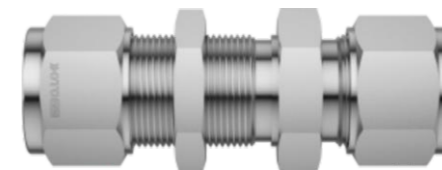
Model	D-Tube outside diameter (mm)	D1-Tube outside diameter (in.)	hexagonal width(mm)			size(mm)							
			h	H	H1	d-min diameter	A	A1	B	B1	I	L	
SRU-3M-2	3	1/8	12	12	11.1	2.4	12.9	12.8	15.3	15.2	22.1	35.2	
SRU-4M-2	4	1/8	12	12	11.1	2.4	13.7	12.8	16.1	15.2	23.4	36.5	
SRU-4M-4	4	1/4	14	12	14.3	2.4	13.7	15.3	16.1	17.7	25.4	39.4	
SRU-6M-2	6	1/8	14	14	11.1	2.4	15.3	12.8	17.7	15.2	24.6	38.5	
SRU-6M-4	6	1/4	14	14	14.3	4.8	15.3	15.3	17.7	17.7	26.2	41.0	
SRU-6M-5	6	5/16	14	14	15.9	4.8	15.3	16.2	17.7	18.6	27.4	42.3	
SRU-8M-4	8	1/4	15	16	14.3	4.8	16.2	15.3	18.6	17.7	27.4	42.3	
SRU-10M-2	10	1/8	18	19	11.1	2.4	17.2	12.8	19.5	15.2	27.7	41.8	
SRU-10M-4	10	1/4	18	19	14.3	4.8	17.2	15.3	19.5	17.7	29.5	44.5	
SRU-10M-5	10	5/16	18	19	15.9	6.4	17.2	16.2	19.5	18.6	30.0	45.1	
SRU-10M-6	10	3/8	18	19	17.5	7.1	17.2	16.9	19.5	19.2	31.0	45.9	
SRU-12M-5	12	5/16	22	22	15.9	6.4	22.8	16.2	22.0	18.6	30.2	47.8	
SRU-12M-6	12	3/8	22	22	17.5	7.1	22.8	16.9	22.0	19.2	31.0	48.4	
SRU-12M-8	12	1/2	22	22	22.2	9.5	22.8	22.8	22.0	22.0	31.0	51.2	
SRU-15M-8	15	1/2	24	25	22.2	10.3	24.4	22.8	22.0	22.0	31.8	52.0	
SRU-16M-10	16	5/8	24	25	25.4	12.7	24.4	24.4	22.0	22.0	31.8	52.0	
SRU-18M-12	18	3/4	27	30	28.6	15.1	24.4	24.4	22.0	22.0	33.3	53.5	
SRU-20M-12	20	3/4	30	32	28.6	15.9	26.0	24.4	22.0	22.0	34.8	54.9	
SRU-20M-16	20	1	35	32	38.1	15.9	26.0	31.2	22.0	26.4	40.4	62.8	
SRU-25M-16	25	1	35	38	38.1	21.8	31.3	31.3	26.5	26.5	40.4	65.0	

SBHU
card sleeve through board Joint



British Tube

Model	D-Tube outside diameter (in.)	hexagonal width(in.)		size(mm)								panel aperture (mm)	max panel thickness (mm)
		h	H	d-min diameter	A	B	I	I1	L	L1			
SBHU-1	1/16	5/16	5/16	1.27	8.63	10.92	23.87	13.46	31.50	17.27	5.16	3.05	
SBHU-2	1/8	1/2	7/16	2.28	12.70	15.24	38.10	24.63	51.30	31.24	8.33	12.70	
SBHU-3	3/16	9/16	1/2	3.04	13.71	16.00	40.38	25.40	53.59	32.00	9.92	12.70	
SBHU-4	1/4	5/8	9/16	4.82	15.24	17.78	42.92	26.16	57.65	33.52	11.50	10.16	
SBHU-5	5/16	11/16	5/8	6.35	16.25	18.54	45.97	28.44	60.70	35.81	13.09	11.17	
SBHU-6	3/8	3/4	11/16	7.11	16.76	19.30	47.49	29.46	62.23	36.83	14.68	11.17	
SBHU-8	1/2	15/16	7/8	10.41	22.86	21.84	50.80	31.75	71.12	41.91	19.44	12.70	
SBHU-10	5/8	1-1/16	1	12.70	24.38	21.84	52.32	32.51	72.64	42.67	22.62	12.70	
SBHU-12	3/4	1-3/16	1-1/8	15.74	24.38	21.84	58.67	37.33	78.99	47.49	25.79	16.76	
SBHU-14	7/8	1-3/8	1-1/4	18.28	25.90	21.84	64.26	42.92	84.58	53.08	28.97	19.05	
SBHU-16	1	1-5/8	1-1/2	22.35	31.24	26.41	71.37	45.21	95.75	57.40	33.73	19.05	

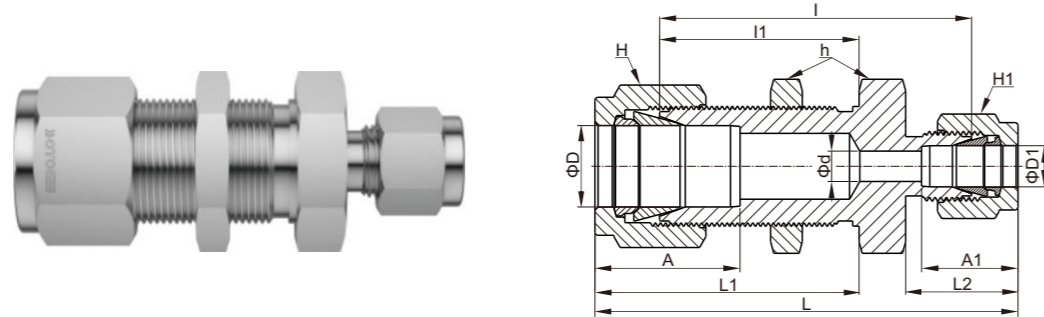


Metric Tube

Model	D-Tube outside diameter (mm)	hexagonal width(mm)			size(mm)								panel aperture (mm)	max panel thickness (mm)
		h	h1	H	d-min diameter	A	B	I	I1	L	L1			
SBHU-3M	3	14	12.7	12	2.4	12.9	15.3	38.1	24.6	51.3	31.2	8.3	12.7	
SBHU-4M	4	14	14.3	12	2.4	13.7	16.1	40.4	25.4	53.6	32.0	9.9	12.7	
SBHU-6M	6	16	15.9	14	4.8	15.3	17.7	42.9	26.2	57.7	33.6	11.5	10.2	
SBHU-8M	8	18	17.5	16	6.4	16.2	18.6	46.0	28.6	61.0	36.1	13.1	11.2	
SBHU-10M	10	22	22.0	19	7.9	17.2	19.5	48.5	29.4	63.7	37.0	16.2	11.2	
SBHU-12M	12	24	23.8	22	9.5	22.8	22.0	50.8	31.8	71.0	41.9	19.5	12.7	
SBHU-15M	15	27	27.0	25	11.9	24.4	22.0	52.3	32.5	72.5	42.6	22.8	12.7	
SBHU-16M	16	27	27.0	25	12.7	24.4	22.0	52.3	32.5	72.5	42.6	22.8	12.7	
SBHU-18M	18	30	30.0	30	15.1	24.4	22.0	58.7	37.3	78.9	47.4	26.0	16.8	
SBHU-20M	20	35	35.0	32	15.9	26.0	22.0	64.3	42.9	84.5	53.0	29.0	17.0	
SBHU-22M	22	35	35.0	32	18.3	26.0	22.0	64.3	42.9	84.5	53.0	29.0	19.1	
SBHU-25M	25	41.3	41.3	38	21.8	31.3	26.5	71.4	45.2	95.9	57.5	33.7	19.1	

SBHRU

card sleeve straight through variable diameter through plate joint

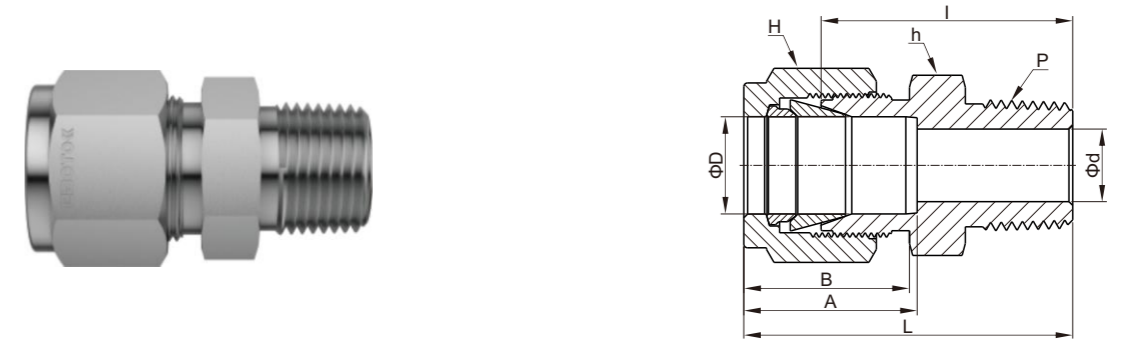


British Tube

Model	D-Tube outside diameter (in.)	D1-Tube outside diameter (in.)	hexagonal width(in.)			size(mm)								panel aperture (mm)	max panel thickness (mm)
			h	H	H1	d-min diameter	A	A1	I	I1	L	L1	L2		
SBHRU-4-2	1/4	1/8	5/8	9/16	7/16	2.28	15.24	12.70	41.14	26.16	55.11	33.52	15.24	11.50	10.16
SBHRU-6-4	3/8	1/4	3/4	11/16	9/16	4.82	16.76	15.24	45.97	29.46	60.70	36.57	17.78	14.68	11.17
SBHRU-8-4	1/2	1/4	15/16	7/8	9/16	4.82	22.86	15.24	49.27	31.75	66.80	41.91	17.78	19.44	12.70

SMC

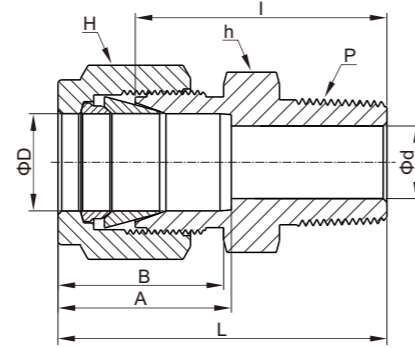
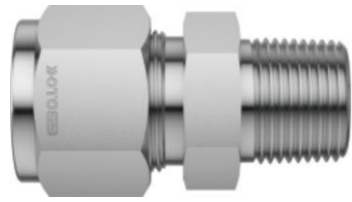
card sleeve male thread joint



British Tube—NPT thread

Model	D-Tube outside diameter (in.)	P-NPT thread spec	hexagonal width(in.)		size(mm)							
			h	H	d-min diameter	A	B	I	L			
SMC-1-1N	1/16	1/16	5/16	5/16	1.27	8.63	10.92	20.00	23.83			
SMC-1-2N	1/16	1/8	7/16	7/16	1.27	8.63	10.92	22.35	26.23			
SMC-2-2N	1/8	1/8	7/16	7/16	2.28	12.70	15.24	23.87	30.48			
SMC-2-4N	1/8	1/4	9/16	7/16	2.28	12.70	15.24	28.95	35.56			
SMC-2-6N	1/8	3/8	11/16	7/16	2.28	12.70	15.24	29.21	35.81			
SMC-2-8N	1/8	1/2	7/8	7/16	2.28	12.70	15.24	35.56	42.16			
SMC-3-2N	3/16	1/8	7/16	1/2	3.04	13.71	16.00	24.63	31.24			
SMC-3-4N	3/16	1/4	9/16	1/2	3.04	13.71	16.00	29.71	36.32			
SMC-4-2N	1/4	1/8	1/2	9/16	4.82	15.24	17.78	25.40	32.76			
SMC-4-4N	1/4	1/4	9/16	9/16	4.82	15.24	17.78	30.48	37.84			
SMC-4-6N	1/4	3/8	11/16	9/16	4.82	15.24	17.78	30.98	38.35			
SMC-4-8N	1/4	1/2	7/8	9/16	4.82	15.24	17.78	37.33	44.70			
SMC-4-12N	1/4	3/4	1-1/16	9/16	4.82	15.24	17.78	38.86	46.22			
SMC-5-2N	5/16	1/8	9/16	5/8	4.82	16.25	18.54	26.67	34.03			
SMC-5-4N	5/16	1/4	9/16	5/8	6.35	16.25	18.54	31.24	38.60			
SMC-5-6N	5/16	3/8	11/16	5/8	6.35	16.25	18.54	31.76	39.11			
SMC-6-2N	3/8	1/8	5/8	11/16	4.82	16.76	19.30	27.94	35.30			
SMC-6-4N	3/8	1/4	5/8	11/16	7.11	16.76	19.30	32.51	39.87			
SMC-6-6N	3/8	3/8	11/16	11/16	7.11	16.76	19.30	32.51	39.87			
SMC-6-8N	3/8	1/2	7/8	11/16	7.11	16.76	19.30	38.86	46.22			
SMC-6-12N	3/8	3/4	1-1/16	11/16	7.11	16.76	19.30	40.38	47.75			
SMC-8-2N	1/2	1/8	13/16	7/8	4.82	22.86	21.84	28.70	38.86			
SMC-8-4N	1/2	1/4	13/16	7/8	7.11	22.86	21.84	33.27	43.43			
SMC-8-6N	1/2	3/8	13/16	7/8	9.65	22.86	21.84	33.27	43.43			
SMC-8-8N	1/2	1/2	7/8	7/8	10.41	22.86	21.84	38.86	49.02			
SMC-8-12N	1/2	3/4	1-1/16	7/8	10.41	22.86	21.84	40.38	50.54			
SMC-8-16N	1/2	1	1-3/8	7/8	10.41	22.86	21.84	46.99	57.15			
SMC-10-6N	5/8	3/8	15/16	1	9.65	24.38	21.84	34.03	44.19			
SMC-10-8N	5/8	1/2	15/16	1	11.93	24.38	21.84	38.86	49.02			
SMC-10-12N	5/8	3/4	1-1/16	1	12.70	24.38	21.84	40.38	50.54			
SMC-12-8N	3/4	1/2	1-1/16	1-1/8	11.93	24.38	21.84	40.38	50.54			
SMC-12-12N	3/4	3/4	1-1/16	1-1/8	15.74	24.38	21.84	40.38	50.54			
SMC-12-16N	3/4	1	1-3/8	1-1/8	15.74	24.38	21.84	46.99	57.15			
SMC-14-12N	7/8	3/4	1-3/16	1-1/4	15.74	25.90	21.84	40.38	50.54			
SMC-14-16N	7/8	1	1-3/8	1-1/4	18.28	25.90	21.84	46.99	57.15			
SMC-16-8N	1	1/2	1-3/8	1-1/2	11.93	31.24	26.41	45.21	57.40			
SMC-16-12N	1	3/4	1-3/8	1-1/2	15.74	31.24	26.41	45.21	57.40			
SMC-16-16N	1	1	1-3/8	1-1/2	22.35	31.24	26.41	50.03	62.23			
SMC-20-16N	1-1/4	1	1-3/4	1-7/8	22.35	41.15	38.86	55.12	77.22			
SMC-20-20N	1-1/4	1-1/4	1-3/4	1-7/8	27.69	41.15	38.86	55.12	77.22			
SMC-24-24N	1-1/2	1-1/2	2-1/8	2-1/4	34.04	50.04	45.21	61.72	88.90			
SMC-32-32N	2	2	2-3/4	3	45.97	67.56	62.74	76.20	113.54			

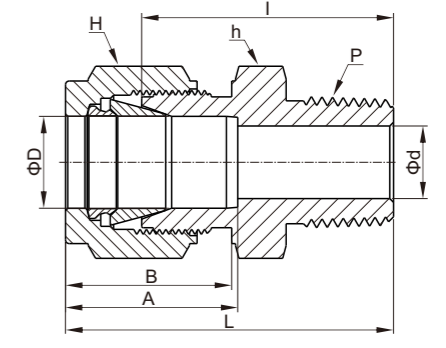
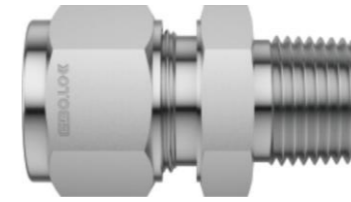
SMC
card sleeve male thread joint



British Tube—ISO taper thread (PT)

Model	D-Tube outside diameter (in.)	P-PT thread spec	hexagonal width(in.)		size(mm)				
			h	H	d-min diameter	A	B	I	L
SMC-2-2R	1/8	1/8	7/16	7/16	2.28	12.70	15.24	23.87	30.48
SMC-2-4R	1/8	1/4	9/16	7/16	2.28	12.70	15.24	28.95	35.56
SMC-4-2R	1/4	1/8	1/2	9/16	4.82	15.24	17.78	25.40	32.76
SMC-4-4R	1/4	1/4	9/16	9/16	4.82	15.24	17.78	30.48	37.84
SMC-4-6R	1/4	3/8	11/16	9/16	4.82	15.24	17.78	30.98	38.35
SMC-4-8R	1/4	1/2	7/8	9/16	4.82	15.24	17.78	37.33	44.70
SMC-5-2R	5/16	1/8	9/16	5/8	4.82	16.25	18.54	26.67	34.03
SMC-5-4R	5/16	1/4	9/16	5/8	6.35	16.25	18.54	31.24	38.60
SMC-6-2R	3/8	1/8	5/8	11/16	4.82	16.76	19.30	27.94	35.30
SMC-6-4R	3/8	1/4	5/8	11/16	7.11	16.76	19.30	32.51	39.87
SMC-6-6R	3/8	3/8	11/16	11/16	7.11	16.76	19.30	32.51	39.87
SMC-6-8R	3/8	1/2	7/8	11/16	7.11	16.76	19.30	38.86	46.22
SMC-8-4R	1/2	1/4	13/16	7/8	7.11	22.86	21.84	33.27	43.43
SMC-8-6R	1/2	3/8	13/16	7/8	9.65	22.86	21.84	33.27	43.43
SMC-8-8R	1/2	1/2	7/8	7/8	10.41	22.86	21.84	38.86	49.02
SMC-8-12R	1/2	3/4	1-1/16	7/8	10.41	22.86	21.84	40.38	50.54
SMC-12-12R	3/4	3/4	1-1/16	1-1/8	15.74	24.38	21.84	40.38	50.54
SMC-16-16R	1	1	1-3/8	1-1/2	22.35	31.24	26.41	50.03	62.23

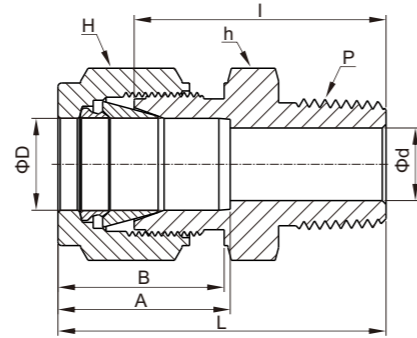
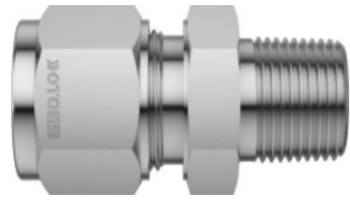
SMC
card sleeve male thread joint



Metric Tube - NPT Thread

Model	D-Tube outside diameter (mm)	P-NPT thread spec	hexagonal width(mm)		size(mm)				
			h	H	d-min diameter	A	B	I	L
SMC-2M-2N	2	1/8	12	12	1.7	12.9	15.3	23.9	30.5
SMC-3M-2N	3	1/8	12	12	2.4	12.9	15.3	23.9	30.5
SMC-3M-4N	3	1/4	14	12	2.4	12.9	15.3	29.0	35.6
SMC-4M-2N	4	1/8	12	12	2.4	13.7	16.1	24.6	31.2
SMC-4M-4N	4	1/4	14	12	2.4	13.7	16.1	29.7	36.3
SMC-6M-2N	6	1/8	14	14	4.8	15.3	17.7	25.4	32.8
SMC-6M-4N	6	1/4	14	14	4.8	15.3	17.7	30.5	37.9
SMC-6M-6N	6	3/8	18	14	4.8	15.3	17.7	31.0	38.4
SMC-6M-8N	6	1/2	22	14	4.8	15.3	17.7	37.3	44.7
SMC-8M-2N	8	1/8	15	16	4.8	16.2	18.6	26.7	34.2
SMC-8M-4N	8	1/4	15	16	6.4	16.2	18.6	31.2	38.7
SMC-8M-6N	8	3/8	18	16	6.4	16.2	18.6	31.8	39.3
SMC-8M-8N	8	1/2	22	16	6.4	16.2	18.6	38.1	45.6
SMC-10M-2N	10	1/8	18	19	4.8	17.2	19.5	28.7	36.3
SMC-10M-4N	10	1/4	18	19	7.1	17.2	19.5	33.3	40.9
SMC-10M-6N	10	3/8	18	19	7.9	17.2	19.5	33.3	40.9
SMC-10M-8N	10	1/2	22	19	7.9	17.2	19.5	38.9	46.5
SMC-12M-2N	12	1/8	22	22	4.8	22.8	22.0	28.7	38.8
SMC-12M-4N	12	1/4	22	22	7.1	22.8	22.0	33.3	43.4
SMC-12M-6N	12	3/8	22	22	9.5	22.8	22.0	33.3	43.4
SMC-12M-8N	12	1/2	22	22	9.5	22.8	22.0	38.9	49.0
SMC-12M-12N	12	3/4	27	22	9.5	22.8	22.0	40.4	50.5
SMC-14M-4N	14	1/4	24	25	7.1	24.4	22.0	34.0	44.1
SMC-14M-6N	14	3/8	24	25	9.5	24.4	22.0	34.0	44.1
SMC-14M-8N	14	1/2	24	25	11.1	24.4	22.0	38.9	49.0
SMC-16M-6N	16	3/8	24	25	9.5	24.4	22.0	34.0	44.1
SMC-16M-8N	16	1/2	24	25	11.9	24.4	22.0	38.9	49.0
SMC-16M-12N	16	3/4	27	25	12.7	24.4	22.0	40.4	50.5
SMC-18M-8N	18	1/2	27	30	11.9	24.4	22.0	40.4	50.5
SMC-18M-12N	18	3/4	27	30	15.1	24.4	22.0	40.4	50.5
SMC-20M-8N	20	1/2	30	32	11.9	26.0	22.0	42.2	52.3
SMC-20M-12N	20	3/4	30	32	15.9	26.0	22.0	42.2	52.3
SMC-22M-12N	22	3/4	30	32	15.9	26.0	22.0	42.2	52.3
SMC-22M-16N	22	1	35	32	18.3	26.0	22.0	47.0	57.1
SMC-25M-12N	25	3/4	35	38	15.9	31.3	26.5	45.2	57.5
SMC-25M-16N	25	1	35	38	21.8	31.3	26.5	50.0	62.3
SMC-28M-16N	28	1	41	46	21.8	36.6	36.6	51.6	72.4
SMC-28M-20N	28	1-1/4	46	46	21.8	36.6	36.6	52.3	73.1
SMC-30M-20N	30	1-1/4	46	50	26.2	39.6	39.2	55.6	77.2
SMC-32M-20N	32	1-1/4	46	50	28.6	42.0	41.6	56.6	79.6
SMC-38M-24N	38	1-1/2	55	60	33.7	49.4	47.9	64.0	91.6

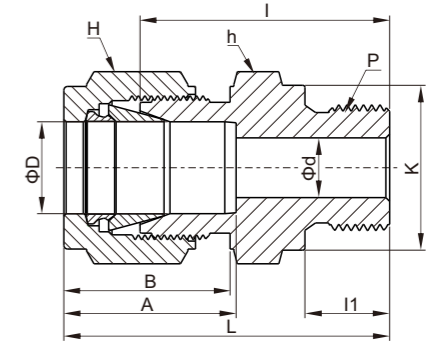
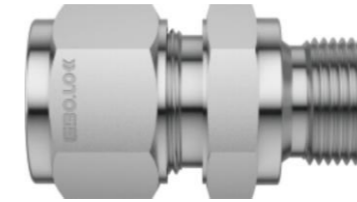
SMC
card sleeve male thread joint



Metric Tube—ISO taper thread (PT)

Model	D-Tube outside diameter (mm)	P-PT thread spec	hexagonal width(mm)		size(mm)					
			h	H	d-min diameter	A	B	I	L	
SMC-2M-2R	2	1/8	12	12	1.7	12.9	15.3	23.9	30.5	
SMC-3M-2R	3	1/8	12	12	2.4	12.9	15.3	23.9	30.5	
SMC-3M-4R	3	1/4	14	12	2.4	12.9	15.3	29.0	35.6	
SMC-4M-2R	4	1/8	12	12	2.4	13.7	16.1	24.6	31.2	
SMC-4M-4R	4	1/4	14	12	2.4	13.7	16.1	29.7	36.3	
SMC-6M-2R	6	1/8	14	14	4.8	15.3	17.7	25.4	32.8	
SMC-6M-4R	6	1/4	14	14	4.8	15.3	17.7	30.5	37.9	
SMC-6M-6R	6	3/8	18	14	4.8	15.3	17.7	31.0	38.4	
SMC-6M-8R	6	1/2	22	14	4.8	15.3	17.7	37.3	44.7	
SMC-8M-2R	8	1/8	15	16	4.8	16.2	18.6	26.7	34.2	
SMC-8M-4R	8	1/4	15	16	6.4	16.2	18.6	31.2	38.7	
SMC-8M-6R	8	3/8	18	16	6.4	16.2	18.6	31.8	39.3	
SMC-8M-8R	8	1/2	22	16	6.4	16.2	18.6	38.1	45.6	
SMC-10M-2R	10	1/8	18	19	4.8	17.2	19.5	28.7	36.3	
SMC-10M-4R	10	1/4	18	19	7.1	17.2	19.5	33.3	40.9	
SMC-10M-6R	10	3/8	18	19	7.9	17.2	19.5	33.3	40.9	
SMC-10M-8R	10	1/2	22	19	7.9	17.2	19.5	38.9	46.5	
SMC-12M-2R	12	1/8	22	22	4.8	22.8	22.0	28.7	38.8	
SMC-12M-4R	12	1/4	22	22	7.1	22.8	22.0	33.3	43.4	
SMC-12M-6R	12	3/8	22	22	9.5	22.8	22.0	33.3	43.4	
SMC-12M-8R	12	1/2	22	22	9.5	22.8	22.0	38.9	49.0	
SMC-12M-12R	12	3/4	27	22	9.5	22.8	22.0	40.4	50.5	
SMC-14M-4R	14	1/4	24	25	7.1	24.4	22.0	34.0	44.1	
SMC-14M-6R	14	3/8	24	25	9.5	24.4	22.0	34.0	44.1	
SMC-14M-8R	14	1/2	24	25	11.1	24.4	22.0	38.9	49.0	
SMC-16M-6R	16	3/8	24	25	9.5	24.4	22.0	34.0	44.1	
SMC-16M-8R	16	1/2	24	25	11.9	24.4	22.0	38.9	49.0	
SMC-16M-12R	16	3/4	27	25	12.7	24.4	22.0	40.4	50.5	
SMC-18M-8R	18	1/2	27	30	11.9	24.4	22.0	40.4	50.5	
SMC-18M-12R	18	3/4	27	30	15.1	24.4	22.0	40.4	50.5	
SMC-20M-8R	20	1/2	30	32	11.9	26.0	22.0	42.2	52.3	
SMC-20M-12R	20	3/4	30	32	15.9	26.0	22.0	42.2	52.3	
SMC-22M-12R	22	3/4	30	32	15.9	26.0	22.0	42.2	52.3	
SMC-22M-16N	22	1	35	32	18.3	26.0	22.0	47.0	57.1	
SMC-25M-12N	25	3/4	35	38	15.9	31.3	26.5	45.2	57.5	
SMC-25M-16R	25	1	35	38	21.8	31.3	26.5	50.0	62.3	
SMC-28M-16R	28	1	41	46	21.8	36.6	36.6	51.6	72.4	
SMC-28M-20R	28	1-1/4	46	46	21.8	36.6	36.6	52.3	73.1	
SMC-30M-20R	30	1-1/4	46	50	26.2	39.6	39.2	55.6	77.2	
SMC-32M-20R	32	1-1/4	46	50	28.6	42.0	41.6	56.6	79.6	
SMC-38M-24R	38	1-1/2	55	60	33.7	49.4	47.9	64.0	91.6	

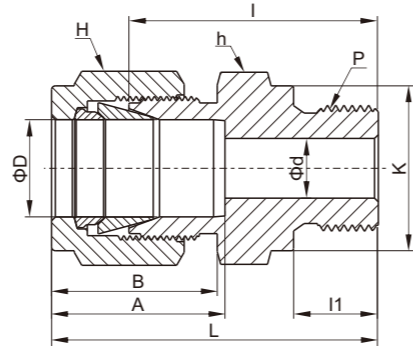
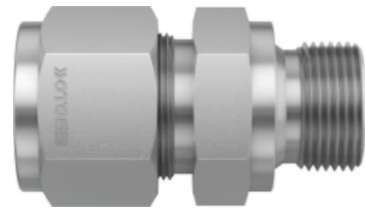
SGMC
card sleeve male threaded joint



Metric Tube—ISO Parallel thread

Model	D-Tube outside diameter (mm)	P-ISO parallel thread spec	hexagonal width(mm)		size(mm)						
			h	H	d-min diameter	A	B	I	I1	L	K
SGMC-3M-2G	3	1/8	14	12	2.4	12.9	15.3	23.4	7.1	30.0	13.8
SGMC-3M-4G	3	1/4	19	12	2.4	12.9	15.3	28.7	11.2	35.3	18.0
SGMC-4M-2G	4	1/8	14	12	2.4	13.7	16.1	24.1	7.1	30.7	13.8
SGMC-6M-2G	6	1/8	14	14	4.0	15.3	17.7	24.9	7.1	32.3	13.8
SGMC-6M-4G	6	1/4	19	14	4.8	15.3	17.7	30.2	11.2	37.6	18.0
SGMC-6M-6G	6	3/8	22	14	4.8	15.3	17.7	31.5	11.2	38.9	21.8
SGMC-6M-8G	6	1/2	27	14	4.8	15.3	17.7	37.3	14.2	44.7	26.0
SGMC-8M-2G	8	1/8	15	16	4.0	16.2	18.6	25.7	7.1	33.2	13.8
SGMC-8M-4G	8	1/4	19	16	6.4	16.2	18.6	31.0	11.2	38.5	18.0
SGMC-8M-6G	8	3/8	22	16	6.4	16.2	18.6	32.3	11.2	39.8	21.8
SGMC-8M-8G	8	1/2	27	16	6.4	16.2	18.6	38.1	14.2	45.6	26.0
SGMC-10M-4G	10	1/4	19	19	5.9	17.2	19.5	31.8	11.2	39.4	18.0
SGMC-10M-6G	10	3/8	22	19	7.9	17.2	19.5	33.0	11.2	40.6	21.8
SGMC-10M-8G	10	1/2	27	19	7.9	17.2	19.5	38.9	14.2	46.5	26.0
SGMC-12M-4G	12	1/4	22	22	5.9	22.8	22.0	32.5	11.2	42.6	18.0
SGMC-12M-6G	12	3/8	22	22	7.9	22.8	22.0	33.0	11.2	43.1	21.8
SGMC-12M-8G	12	1/2	27	22	9.5	22.8	22.0	38.9	14.2	49.0	26.0
SGMC-12M-12G	12	3/4	35	22	9.5	22.8	22.0	42.7	15.7	52.8	32.0
SGMC-16M-6G	16	3/8	24	25	7.9	24.4	22.0	33.8	11.2	43.9	21.8
SGMC-16M-8G	16	1/2	27	25	11.9	24.4	22.0	38.9	14.2	49.0	26.0
SGMC-18M-8G	18	1/2	27	30	11.9	24.4	22.0	38.9	14.2	49.0	26.0
SGMC-18M-12G	18	3/4	35	30	15.1	24.4	22.0	42.7	15.7	52.8	32.0
SGMC-20M-8G	20	1/2	30	32	11.9	26.0	22.0	40.4	14.2	50.5	26.0
SGMC-20M-12G	20	3/4	35	32	15.9	26.0	22.0	42.7	15.7	52.8	32.0
SGMC-22M-12G	22	3/4	35	32	15.9	26.0	22.0	42.7	15.7	52.8	32.0
SGMC-22M-16G	22	1	41	32	18.3	26.0	22.0	45.2	18.3	55.3	39.0
SGMC-25M-12G	25	3/4	35	38	15.9	31.3	26.5	45.2	15.7	57.5	32.0
SGMC-25M-16G	25	1	41	38	19.8	31.3	26.5	47.8	18.3	60.1	39.0

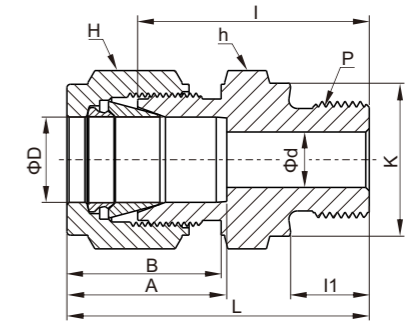
SGMC
card sleeve male threaded joint



British Tube—ISO Parallel thread

Model	D-Tube outside diameter (mm)	P-ISO Parallel thread spec	hexagonal width(mm)		size(mm)							
			h	H	d-min diameter	A	B	I	I1	L	K	
SGMC-2-2G	1/8	1/8	14.3	11.1	2.28	12.7	15.24	23.4	7.1	30.0	13.8	
SGMC-2-4G	1/8	1/4	19.1	11.1	2.28	12.7	15.24	28.7	11.2	35.3	18.0	
SGMC-2-6G	1/8	3/8	22.2	11.1	2.28	12.7	15.24	29.7	11.2	36.3	21.8	
SGMC-4-2G	1/4	1/8	14.3	14.3	4.0	15.24	17.78	24.9	7.1	32.3	13.8	
SGMC-4-4G	1/4	1/4	19.1	14.3	4.8	15.24	17.78	30.2	11.2	37.6	18.0	
SGMC-4-6G	1/4	3/8	22.2	14.3	4.8	15.24	17.78	31.5	11.2	38.9	21.8	
SGMC-4-8G	1/4	1/2	27.0	14.3	4.8	15.24	17.78	37.3	14.2	44.7	26.0	
SGMC-6-2G	3/8	1/8	15.9	17.5	4.0	16.76	19.3	30.4	7.1	37.8	13.8	
SGMC-6-4G	3/8	1/4	19.1	17.5	5.9	16.76	19.3	31.7	11.2	39.1	18.0	
SGMC-6-6G	3/8	3/8	22.2	17.5	7.1	16.76	19.3	33.0	11.2	40.4	21.8	
SGMC-6-8G	3/8	1/2	27.0	17.5	7.1	16.76	19.3	38.8	14.2	46.2	26.0	
SGMC-8-4G	1/2	1/4	20.6	22.2	5.9	22.86	21.84	32.5	11.2	42.7	18.0	
SGMC-8-6G	1/2	3/8	22.2	22.2	7.9	22.86	21.84	33.0	11.2	43.2	21.8	
SGMC-8-8G	1/2	1/2	27.0	22.2	10.4	22.86	21.84	38.8	14.2	49.0	26.0	
SGMC-12-8G	3/4	1/2	27.0	28.6	11.9	24.38	21.84	38.8	14.2	49.0	26.0	
SGMC-12-12G	3/4	3/4	33.3	28.6	15.7	24.38	21.84	42.7	15.7	52.9	32.0	
SGMC-16-8G	1"	1/2	34.9	38.1	11.9	31.24	26.41	43.3	14.2	55.5	26.0	
SGMC-16-12G	1"	3/4	34.9	38.1	16.0	31.24	26.41	45.5	15.7	57.7	32.0	
SGMC-16-16G	1"	1"	41.3	38.1	19.8	31.24	26.41	47.7	18.3	59.9	39.1	

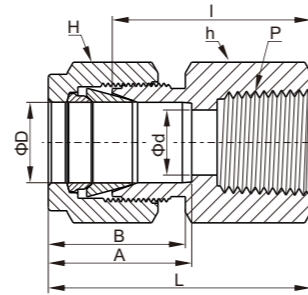
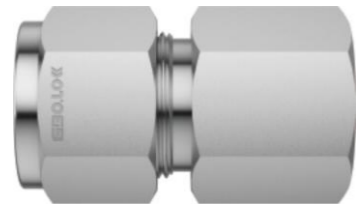
SMC-GM
card sleeve male thread metal gasket sealing joint



Metric Tube—ISO Parallel thread

Model	D-Tube outside diameter (mm)	P-ISO parallel thread spec	hexagonal width(mm)		size(mm)							
			h	H	d-min diameter	A	B	I	I1	L	K	
SMC-3M-2GM	3	1/8	14	12	2.4	12.9	15.3	23.4	7.1	30.0	13.8	
SMC-3M-4GM	3	1/4	19	12	2.4	12.9	15.3	28.7	11.2	35.3	18.0	
SMC-4M-2GM	4	1/8	14	12	2.4	13.7	16.1	24.1	7.1	30.7	13.8	
SMC-6M-2GM	6	1/8	14	14	4.0	15.3	17.7	24.9	7.1	32.3	13.8	
SMC-6M-4GM	6	1/4	19	14	4.8	15.3	17.7	30.2	11.2	37.6	18.0	
SMC-6M-6GM	6	3/8	22	14	4.8	15.3	17.7	31.5	11.2	38.9	21.8	
SMC-6M-8GM	6	1/2	27	14	4.8	15.3	17.7	37.3	14.2	44.7	26.0	
SMC-8M-2GM	8	1/8	15	16	4.0	16.2	18.6	25.7	7.1	33.2	13.8	
SMC-8M-4GM	8	1/4	19	16	6.4	16.2	18.6	31.0	11.2	38.5	18.0	
SMC-8M-6GM	8	3/8	22	16	6.4	16.2	18.6	32.3	11.2	39.8	21.8	
SMC-8M-8GM	8	1/2	27	16	6.4	16.2	18.6	38.1	14.2	45.6	26.0	
SMC-10M-4GM	10	1/4	19	19	5.9	17.2	19.5	31.8	11.2	39.4	18.0	
SMC-10M-6GM	10	3/8	22	19	7.9	17.2	19.5	33.0	11.2	40.6	21.8	
SMC-10M-8GM	10	1/2	27	19	7.9	17.2	19.5	38.9	14.2	46.5	26.0	
SMC-12M-4GM	12	1/4	22	22	5.9	22.8	22.0	32.5	11.2	42.6	18.0	
SMC-12M-6GM	12	3/8	22	22	7.9	22.8	22.0	33.0	11.2	43.1	21.8	
SMC-12M-8GM	12	1/2	27	22	9.5	22.8	22.0	38.9	14.2	49.0	26.0	
SMC-12M-12GM	12	3/4	35	22	9.5	22.8	22.0	42.7	15.7	52.8	32.0	
SMC-15M-8GM	15	1/2	27	25	11.9	24.4	22.0	38.9	14.2	49.0	26.0	
SMC-16M-6GM	16	3/8	24	25	7.9	24.4	22.0	33.8	11.2	43.9	21.8	
SMC-16M-8GM	16	1/2	27	25	11.9	24.4	22.0	38.9	14.2	49.0	26.0	
SMC-18M-8GM	18	1/2	27	30	11.9	24.4	22.0	38.9	14.2	49.0	26.0	
SMC-18M-12GM	18	3/4	35	30	15.1	24.4	22.0	42.7	15.7	52.8	32.0	
SMC-20M-8GM	20	1/2	30	32	11.9	26.0	22.0	40.4	14.2	50.5	26.0	
SMC-20M-12GM	20	3/4	35	32	15.9	26.0	22.0	42.7	15.7	52.8	32.0	
SMC-22M-12GM	22	3/4	35	32	15.9	26.0	22.0	42.7	15.7	52.8	32.0	
SMC-22M-16GM	22	1	41	32	18.3	26.0	22.0	45.2	18.3	55.3	39.0	
SMC-25M-12GM	25	3/4	35	38	15.9	31.3	26.5	45.2	15.7	57.5	32.0	
SMC-25M-16GM	25	1	41	38	19.8	31.3	26.5	47.8	18.3	60.1	39.0	

SFC
card sleeve female thread joint

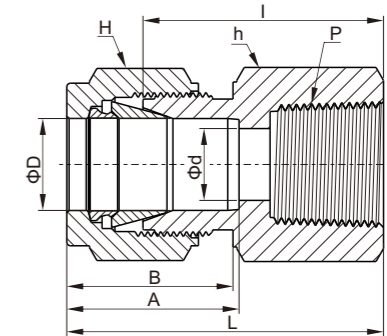


British Tube—ISO NPT thread

Model	D-Tube outside diameter (in.)	P-NPT thread spec	hexagonal width(in.)		size(mm)				
			h	H	d-min diameter	A	B	I	L
SFC-2-2N	1/8	1/8	9/16	7/16	2.28	12.70	15.24	22.09	28.70
SFC-2-4N	1/8	1/4	3/4	7/16	2.28	12.70	15.24	26.92	33.52
SFC-3-2N	3/16	1/8	9/16	1/2	3.04	13.71	16.00	23.11	29.71
SFC-4-2N	1/4	1/8	9/16	9/16	4.82	15.24	17.78	23.87	31.24
SFC-4-4N	1/4	1/4	3/4	9/16	4.82	15.24	17.78	28.44	35.81
SFC-4-6N	1/4	3/8	7/8	9/16	4.82	15.24	17.78	30.22	37.59
SFC-4-8N	1/4	1/2	1-1/16	9/16	4.82	15.24	17.78	35.05	42.41
SFC-5-2N	5/16	1/8	9/16	5/8	6.35	16.25	18.54	24.63	32.00
SFC-5-4N	5/16	1/4	3/4	5/8	6.35	16.25	18.54	29.46	36.83
SFC-6-2N	3/8	1/8	5/8	11/16	7.11	16.76	19.30	25.40	32.76
SFC-6-4N	3/8	1/4	3/4	11/16	7.11	16.76	19.30	30.22	37.59
SFC-6-6N	3/8	3/8	7/8	11/16	7.11	16.76	19.30	31.75	39.11
SFC-6-8N	3/8	1/2	1-1/16	11/16	7.11	16.76	19.30	36.57	43.94
SFC-6-12N	3/8	3/4	1-5/16	11/16	7.11	16.76	19.30	40.38	47.75
SFC-8-4N	1/2	1/4	13/16	7/8	10.41	22.86	21.84	30.22	40.38
SFC-8-6N	1/2	3/8	7/8	7/8	10.41	22.86	21.84	31.75	41.91
SFC-8-8N	1/2	1/2	1-1/16	7/8	10.41	22.86	21.84	36.57	46.73
SFC-8-12N	1/2	3/4	1-5/16	7/8	10.41	22.86	21.84	38.10	48.26
SFC-10-6N	5/8	3/8	15/16	1	12.70	24.38	21.84	31.75	41.91
SFC-10-8N	5/8	1/2	1-1/16	1	12.70	24.38	21.84	36.57	46.73
SFC-12-8N	3/4	1/2	1-1/16	1-1/8	15.74	24.38	21.84	36.57	46.73
SFC-12-12N	3/4	3/4	1-5/16	1-1/8	15.74	24.38	21.84	38.10	48.26
SFC-14-12N	7/8	3/4	1-5/16	1-1/4	18.28	25.90	21.84	39.62	49.78
SFC-16-12N	1	3/4	1-3/8	1-1/2	22.35	31.24	26.41	41.14	53.34
SFC-16-16N	1	1	1-5/8	1-1/2	22.35	31.24	26.41	50.03	62.23

ISO taper threads can be provided upon request

SFC
card sleeve female thread joint

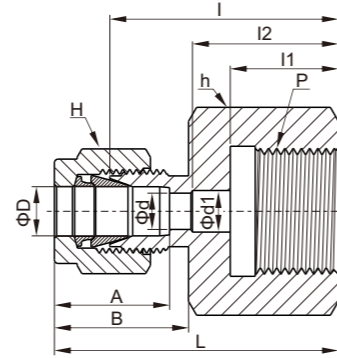
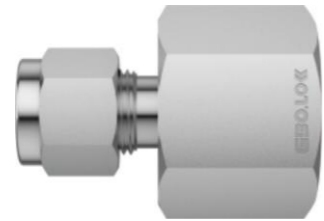


Metric Tube—ISO taper thread(PT)

Model	D-Tube outside diameter (mm)	P-PT thread spec	hexagonal width(in.)		size(mm)				
			h	H	d-min diameter	A	B	I	L
SFC-3M-2R	3	1/8	14	12	2.4	12.9	15.3	22.1	28.7
SFC-3M-4R	3	1/4	19	12	2.4	12.9	15.3	26.9	33.5
SFC-4M-2R	4	1/8	14	12	2.4	13.7	16.1	23.1	29.7
SFC-6M-2R	6	1/8	14	14	4.8	15.3	17.7	23.9	31.3
SFC-6M-4R	6	1/4	19	14	4.8	15.3	17.7	28.4	35.8
SFC-6M-6R	6	3/8	22	14	4.8	15.3	17.7	30.2	37.6
SFC-6M-8R	6	1/2	27	14	4.8	15.3	17.7	35.1	42.5
SFC-8M-2R	8	1/8	15	16	6.4	16.2	18.6	24.6	32.1
SFC-8M-4R	8	1/4	19	16	6.4	16.2	18.6	29.5	37.0
SFC-8M-6R	8	3/8	22	16	6.4	16.2	18.6	31.0	38.5
SFC-8M-8R	8	1/2	27	16	6.4	16.2	18.6	35.8	43.3
SFC-10M-2R	10	1/8	18	19	7.9	17.2	19.5	25.4	33.0
SFC-10M-4R	10	1/4	19	19	7.9	17.2	19.5	30.2	37.8
SFC-10M-6R	10	3/8	22	19	7.9	17.2	19.5	31.8	39.4
SFC-10M-8R	10	1/2	27	19	7.9	17.2	19.5	36.6	44.2
SFC-12M-2R	12	1/8	22	22	8.3	22.8	22.0	25.4	35.5
SFC-12M-4R	12	1/4	22	22	9.5	22.8	22.0	30.2	40.3
SFC-12M-6R	12	3/8	22	22	9.5	22.8	22.0	31.8	41.9
SFC-12M-8R	12	1/2	27	22	9.5	22.8	22.0	36.6	46.7
SFC-12M-12R	12	3/4	35	22	9.5	22.8	22.0	38.9	49.0
SFC-15M-8R	15	1/2	27	25	11.9	24.4	22.0	36.6	46.7
SFC-16M-8R	16	1/2	27	25	12.7	24.4	22.0	36.8	46.9
SFC-20M-8R	20	1/2	30	32	15.9	26.0	22.0	37.8	47.9
SFC-20M-12R	20	3/4	35	32	15.9	26.0	22.0	39.6	49.7
SFC-22M-12R	22	3/4	35	32	18.3	26.0	22.0	39.6	49.7
SFC-22M-16R	22	1	41	32	18.3	26.0	22.0	47.8	57.9
SFC-25M-12R	25	3/4	35	38	21.8	31.3	26.5	41.1	53.4
SFC-25M-16R	25	1	41	38	21.8	31.3	26.5	50.0	62.3

NPT tapered thread can be provided upon request

SGC
card sleeve gauge joint



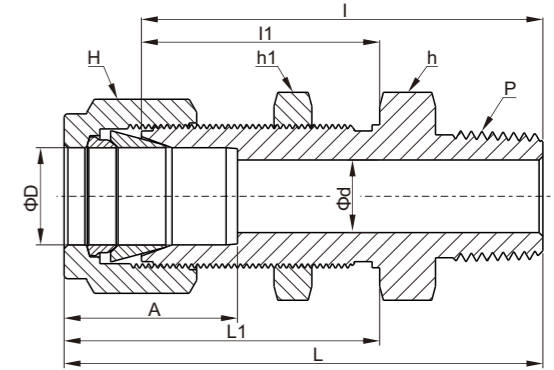
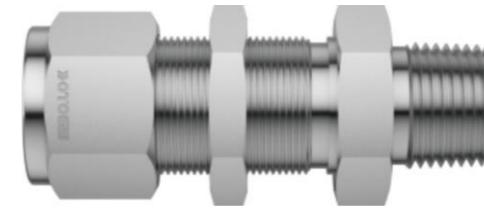
British Tube—ISO Parallel thread

Model	D-Tube outside diameter (in.)	P-ISO parallel thread spec	hexagonal width(in.)		size(mm)							
			h	H	d-min diameter	d1	A	B	I	I1	I2	L
SGC-4-4G	1/4	1/4	3/4	9/16	4.82	5.58	15.24	17.78	30.22	13.00	17.0	37.59
SGC-4-6G	1/4	3/8	15/16	9/16	4.82	6.60	15.24	17.78	30.22	14.20	20.3	37.59
SGC-4-8G	1/4	1/2	1-1/16	9/16	4.82	6.60	15.24	17.78	36.07	18.80	24.9	43.43
SGC-5-4G	5/16	1/4	3/4	5/8	5.58	-	16.25	18.54	30.98	13.00	-	38.35
SGC-5-8G	5/16	1/2	1-1/16	5/8	7.11	-	16.25	18.54	33.53	18.80	-	40.89
SGC-6-4G	3/8	1/4	3/4	11/16	5.58	-	16.76	19.30	31.75	13.00	-	39.12
SGC-6-6G	3/8	3/8	15/16	11/16	6.60	-	16.76	19.30	31.24	14.20	-	38.61
SGC-6-8G	3/8	1/2	1-1/16	11/16	7.11	-	16.76	19.30	34.54	18.80	-	41.91
SGC-8-4G	1/2	1/4	7/8	7/8	5.58	-	22.86	21.84	31.80	13.00	-	41.95
SGC-8-6G	1/2	3/8	15/16	7/8	6.60	-	22.86	21.84	34.29	14.20	-	44.45
SGC-8-8G	1/2	1/2	1-1/16	7/8	7.11	7.11	22.86	21.84	38.10	18.80	-	48.26

Metric Tube—ISO Parallel thread

Model	D-Tube outside diameter (mm)	P-ISO parallel thread spec	hexagonal width(mm)		size(mm)							
			h	H	d-min diameter	d1	A	B	I	I1	I2	L
SGC-3M-4G	3	1/4	19	12	2.4	5.5	12.9	15.3	28.7	13	17	35.3
SGC-6M-4G	6	1/4	19	14	4.8	5.5	15.3	17.7	30.2	13	17	37.6
SGC-6M-6G	6	3/8	24	14	4.8	6.5	15.3	17.7	30.2	14	20	37.6
SGC-6M-8G	6	1/2	27	14	4.8	7.0	15.3	17.7	36.1	19	25	43.5
SGC-8M-4G	8	1/4	19	16	5.5	5.5	16.2	18.6	31.0	13	-	38.5
SGC-8M-6G	8	3/8	24	16	6.5	6.5	16.2	18.6	28.7	14	-	36.2
SGC-8M-8G	8	1/2	27	16	7.0	7.0	16.2	18.6	33.5	19	-	41.0
SGC-10M-4G	10	1/4	19	19	5.5	5.5	17.2	19.5	31.8	13	-	39.4
SGC-10M-6G	10	3/8	24	19	6.5	6.5	17.2	19.5	31.2	14	-	38.8
SGC-10M-8G	10	1/2	27	19	7.0	7.0	17.2	19.5	34.5	19	-	42.1
SGC-12M-4G	12	1/4	22	22	5.5	5.5	22.8	22.0	31.8	13	-	41.9
SGC-12M-6G	12	3/8	24	22	6.5	6.5	22.8	22.0	34.3	14	-	44.4
SGC-12M-8G	12	1/2	27	22	7.0	7.0	22.8	22.0	38.1	19	-	48.2
SGC-20M-8G	20	1/2	30	32	7.0	7.0	26.0	22.0	44.2	19	-	54.3
SGC-22M-8G	22	1/2	30	32	7.0	7.0	26.0	22.0	44.2	19	-	54.3

SMCB
card sleeve male thread through plate joint

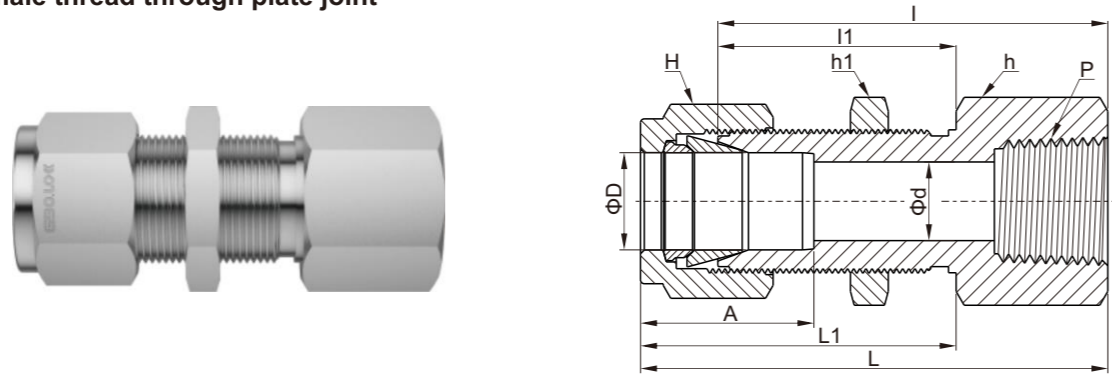


British Tube—ISO NPT thread

Model	D-Tube outside diameter (in.)	P-NPT thread spec	hexagonal width(in.)			size(mm)						panel aperture (mm)	max panel thickness (mm)
			h	h1	H	d-min diameter	A	I	I1	L	L1		
SMCB-2-2N	1/8	1/8	1/2	1/2	7/16	2.28	12.70	39.87	24.63	46.48	31.24	8.33	12.70
SMCB-4-2N	1/4	1/8	5/8	5/8	9/16	4.82	15.24	42.16	26.16	49.53	33.52	11.50	10.16
SMCB-4-4N	1/4	1/4	5/8	5/8	9/16	4.82	15.24	46.73	26.16	54.10	33.52	11.50	10.16
SMCB-6-4N	3/8	1/4	3/4	3/4	11/16	7.11	16.76	50.03	29.46	57.40	36.83	14.68	11.17
SMCB-6-6N	3/8	3/8	3/4	3/4	11/16	7.11	16.76	50.03	29.46	57.40	36.83	14.68	11.17
SMCB-6-8N	3/8	1/2	7/8	3/4	11/16	7.11	16.76	56.38	29.46	63.75	36.83	14.68	11.17
SMCB-8-6N	1/2	3/8	15/16	15/16	7/8	9.65	22.86	53.08	31.75	63.24	41.91	19.44	12.70
SMCB-8-8N	1/2	1/2	15/16	15/16	7/8	10.41	22.86	58.67	31.75	68.83	41.91	19.44	12.70
SMCB-12-12N	3/4	3/4	1-3/16	1-3/16	1-1/8	15.74	24.38	66.04	37.33	76.20	47.49	25.79	16.76
SMCB-16-16N	1	1	1-5/8	1-5/8	1-1/2	22.35	31.24	81.02	45.21	93.21	57.40	33.73	19.05

ISO taper threads can be provided upon request

SFCB
card sleeve male thread through plate joint



British Tube—ISO NPT thread

Model	D-Tube outside diameter (in.)	P-NPT thread spec	hexagonal width(in.)			size(mm)						panel aperture (mm)	max panel thickness (mm)
			h	h1	H	d-min diameter	A	I	I1	L	L1		
SFCB-2-2N	1/8	1/8	9/16	1/2	7/16	2.28	12.70	38.10	24.63	44.70	31.24	8.33	12.70
SFCB-4-2N	1/4	1/8	5/8	5/8	9/16	4.82	15.24	39.62	26.16	46.99	33.52	11.50	10.16
SFCB-4-4N	1/4	1/4	3/4	5/8	9/16	4.82	15.24	44.45	26.16	51.81	33.52	11.50	10.16
SFCB-6-4N	3/8	1/4	3/4	3/4	11/16	7.11	16.76	47.75	29.46	55.11	36.83	14.68	11.17
SFCB-8-6N	1/2	3/8	15/16	15/16	7/8	10.41	22.86	51.56	31.75	61.72	41.91	19.44	12.70
SFCB-8-8N	1/2	1/2	1-1/16	15/16	7/8	10.41	22.86	56.38	31.75	66.54	41.91	19.44	12.70
SFCB-12-12N	3/4	3/4	1-1/4	1-3/16	1-1/8	15.74	24.38	63.60	37.33	73.51	47.49	25.79	16.76

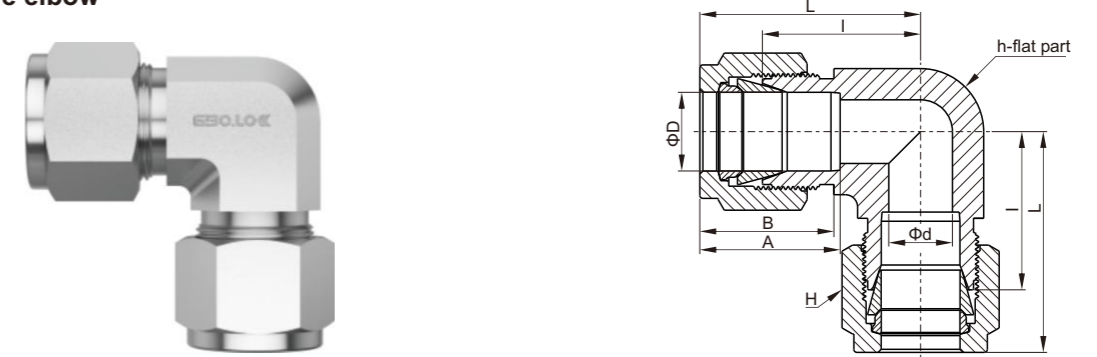
ISO taper threads can be provided upon request

Metric Tube—ISO NPT thread

Model	D-Tube outside diameter (mm)	P-NPT thread spec	hexagonal width(mm)			size(mm)						panel aperture (mm)	max panel thickness (mm)
			h	h1	H	d-min diameter	A	I	I1	L	L1		
SFCB-6M-2N	6	1/8	15.8	15.8	14	4.8	15.3	39.6	27.7	46.90	35.00	11.5	10.2
SFCB-6M-4N	6	1/4	19.0	16.0	14	4.8	15.3	44.4	26.2	51.80	33.60	11.5	10.2
SFCB-8M-4N	8	1/4	19.0	17.4	16	6.4	16.2	46.7	28.4	53.85	35.55	13.1	11.2
SFCB-12M-8N	12	1/2	27.0	24.0	22	9.5	22.8	56.4	31.8	66.50	41.90	19.5	12.7

ISO taper threads can be provided upon request

SUE
card sleeve elbow



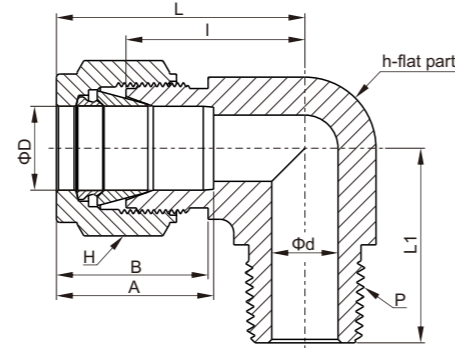
British Tube

Model	D-Tube outside diameter (in.)	hexagonal width(in.)		size(mm)				
		h	H	d-min diameter	A	B	I	L
SUE-1	1/16	3/8	5/16	1.27	8.63	10.92	14.00	18.03
SUE-2	1/8	3/8	7/16	2.28	12.70	15.24	15.74	22.35
SUE-3	3/16	1/2	1/2	3.04	13.71	16.00	18.54	25.14
SUE-4	1/4	1/2	9/16	4.82	15.24	17.78	20.10	27.40
SUE-5	5/16	5/8	5/8	6.35	16.25	18.54	22.35	29.71
SUE-6	3/8	5/8	11/16	7.11	16.76	19.30	23.11	30.48
SUE-8	1/2	13/16	7/8	10.41	22.86	21.84	25.90	36.06
SUE-10	5/8	15/16	1	12.70	24.38	21.84	27.94	38.10
SUE-12	3/4	1-1/16	1-1/8	15.74	24.38	21.84	29.71	39.87
SUE-14	7/8	1-3/8	1-1/4	18.28	25.90	21.84	34.54	44.70
SUE-16	1	1-3/8	1-1/2	22.35	31.24	26.41	36.83	49.02
SUE-20	1-1/4	1-11/16	1-7/8	27.69	41.15	38.86	44.45	66.55
SUE-24	1-1/2	2	2-1/4	34.04	50.04	45.21	50.80	77.98
SUE-32	2	2-3/4	3	45.97	67.56	62.74	69.85	107.19

Metric Tube

Model	D-Tube outside diameter (mm)	hexagonal width(mm)		size(mm)				
		h	H	d-min diameter	A	B	I	L
SUE-2M	2	9.5	12	1.7	12.9	15.3	15.7	22.3
SUE-3M	3	9.5	12	2.4	12.9	15.3	15.7	22.3
SUE-4M	4	12.7	12	2.4	13.7	16.1	18.8	25.4
SUE-6M	6	12.7	14	4.8	15.3	17.7	19.6	27.0
SUE-8M	8	15.9	16	6.4	16.2	18.6	22.4	29.9
SUE-10M	10	17.5	19	7.9	17.2	19.5	23.9	31.5
SUE-12M	12	20.6	22	9.5	22.8	22.0	25.9	36.0
SUE-15M	15	23.8	25	11.9	24.4	22.0	27.9	38.8
SUE-16M	16	23.8	25	12.7	24.4	22.0	27.9	38.0
SUE-18M	18	27.0	30	15.1	24.4	22.0	29.7	39.8
SUE-20M	20	34.9	32	15.9	26.0	22.0	34.5	44.6
SUE-22M	22	34.9	32	18.3	26.0	22.0	34.5	44.6
SUE-25M	25	34.9	38	21.8	31.3	26.5	36.8	49.1
SUE-28M	28	41	46	21.8	36.6	36.6	43.2	64.0
SUE-30M	30	46	50	26.2	39.6	39.2	48.3	69.9
SUE-32M	32	46	50	28.6	42.0	41.6	49.3	72.3
SUE-38M	38	55	60	33.7	49.4	47.9	56.4	84.0

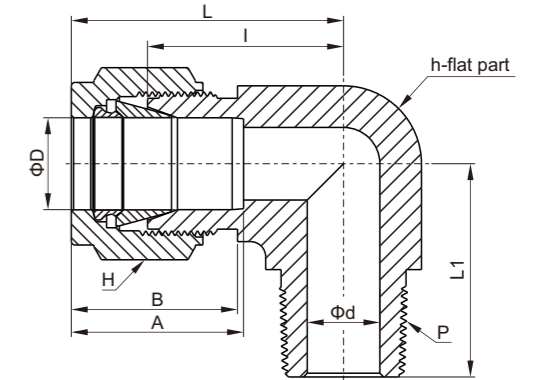
SME
card sleeve male thread elbow



Metric Tube—NPT thread

Model	D-Tube outside diameter (mm)	P-NPT thread spec	hexagonal width(mm)		size(mm)					
			h	H	d-min diameter	A	B	I	L	L1
SME-3M-2N	3	1/8	12.7	12	2.4	12.9	15.3	17.0	23.6	17.8
SME-3M-4N	3	1/4	12.7	12	2.4	12.9	15.3	18.0	24.6	23.4
SME-4M-2N	4	1/8	12.7	12	2.4	13.7	16.1	18.8	25.4	18.8
SME-4M-4N	4	1/4	12.7	12	2.4	13.7	16.1	18.8	25.4	23.4
SME-6M-2N	6	1/8	12.7	14	4.8	15.3	17.7	19.6	27.0	18.8
SME-6M-4N	6	1/4	12.7	14	4.8	15.3	17.7	19.6	27.0	23.4
SME-6M-6N	6	3/8	15.9	14	4.8	15.3	17.7	22.4	29.8	26.2
SME-6M-8N	6	1/2	20.6	14	4.8	15.3	17.7	24.4	31.8	33.0
SME-8M-2N	8	1/8	14.3	16	4.8	16.2	18.6	21.3	28.8	19.8
SME-8M-4N	8	1/4	14.3	16	6.4	16.2	18.6	21.3	28.8	24.4
SME-8M-6N	8	3/8	15.9	16	6.4	16.2	18.6	23.1	30.6	26.2
SME-8M-8N	8	1/2	20.6	16	6.4	16.2	18.6	25.1	32.6	33.0
SME-10M-2N	10	1/8	17.5	19	4.8	17.2	19.5	23.9	31.5	21.6
SME-10M-4N	10	1/4	17.5	19	7.1	17.2	19.5	23.9	31.5	26.2
SME-10M-6N	10	3/8	17.5	19	7.9	17.2	19.5	23.9	31.5	26.2
SME-10M-8N	10	1/2	20.6	19	7.9	17.2	19.5	25.9	33.5	33.0
SME-12M-4N	12	1/4	20.6	22	7.1	22.8	22.0	25.9	36.0	28.2
SME-12M-6N	12	3/8	20.6	22	9.5	22.8	22.0	25.9	36.0	28.2
SME-12M-8N	12	1/2	20.6	22	9.5	22.8	22.0	25.9	36.0	33.0
SME-12M-12N	12	3/4	27.0	22	9.5	22.8	22.0	29.7	39.8	36.8
SME-16M-6N	16	3/8	23.8	25	9.5	24.4	22.0	27.9	38.0	30.2
SME-16M-8N	16	1/2	23.8	25	11.9	24.4	22.0	27.9	38.0	35.1
SME-16M-12N	16	3/4	27.0	25	12.7	24.4	22.0	29.7	39.8	36.8
SME-18M-8N	18	1/2	27.0	30	11.9	24.4	22.0	29.7	39.8	36.8
SME-18M-12N	18	3/4	27.0	30	15.1	24.4	22.0	29.7	39.8	36.8
SME-20M-8N	20	1/2	34.9	32	11.9	26.0	22.0	34.5	44.6	41.7
SME-20M-12N	20	3/4	34.9	32	15.9	26.0	22.0	34.5	44.6	41.7
SME-22M-12N	22	3/4	34.9	32	15.9	26.0	22.0	34.5	44.6	41.7
SME-22M-16N	22	1	34.9	32	18.3	26.0	22.0	34.5	44.6	46.5
SME-25M-12N	25	3/4	34.9	38	15.9	31.3	26.5	36.8	49.1	41.7
SME-25M-16N	25	1	34.9	38	21.8	31.3	26.5	36.8	49.1	46.5
SME-30M-20N	30	1-1/4	46	50	26.2	39.6	39.2	48.3	69.9	53.1
SME-32M-20N	32	1-1/4	46	50	27.8	42.0	41.6	49.3	72.3	53.1
SME-38M-24N	38	1-1/2	55	60	33.7	49.4	47.9	56.4	84.0	60.4

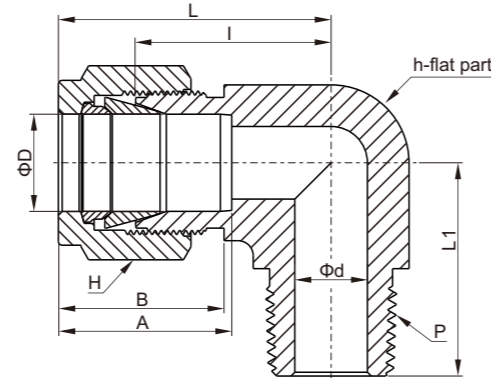
SME
card sleeve male thread elbow



Metric Tube—ISO taper thread (PT)

Model	D-Tube outside diameter (mm)	P-PT thread spec	hexagonal width(mm)		size(mm)					
			h	H	d-min diameter	A	B	I	L	L1
SME-3M-2R	3	1/8	12.7	12	2.4	12.9	15.3	17.0	23.6	17.8
SME-3M-4R	3	1/4	12.7	12	2.4	12.9	15.3	18.0	24.6	23.4
SME-4M-2R	4	1/8	12.7	12	2.4	13.7	16.1	18.8	25.4	18.8
SME-4M-4R	4	1/4	12.7	12	2.4	13.7	16.1	18.8	25.4	23.4
SME-6M-2R	6	1/8	12.7	14	4.8	15.3	17.7	19.6	27.0	18.8
SME-6M-4R	6	1/4	12.7	14	4.8	15.3	17.7	19.6	27.0	23.4
SME-6M-6R	6	3/8	15.9	14	4.8	15.3	17.7	22.4	29.8	26.2
SME-6M-8R	6	1/2	20.6	14	4.8	15.3	17.7	24.4	31.8	33.0
SME-8M-2R	8	1/8	14.3	16	4.8	16.2	18.6	21.3	28.8	19.8
SME-8M-4R	8	1/4	14.3	16	6.4	16.2	18.6	21.3	28.8	24.4
SME-8M-6R	8	3/8	15.9	16	6.4	16.2	18.6	23.1	30.6	26.2
SME-8M-8R	8	1/2	20.6	16	6.4	16.2	18.6	25.1	32.6	33.0
SME-10M-4R	10	1/4	17.5	19	7.1	17.2	19.5	23.9	31.5	26.2
SME-10M-6R	10	3/8	17.5	19	7.9	17.2	19.5	23.9	31.5	26.2
SME-10M-8R	10	1/2	20.6	19	7.9	17.2	19.5	25.9	33.5	33.0
SME-12M-2R	12	1/8	20.6	22	4.8	22.8	22.0	25.9	36.0	23.6
SME-12M-4R	12	1/4	20.6	22	7.1	22.8	22.0	25.9	36.0	28.2
SME-12M-6R	12	3/8	20.6	22	9.5	22.8	22.0	25.9	36.0	28.2
SME-12M-8R	12	1/2	20.6	22	9.5	22.8	22.0	25.9	36.0	33.0
SME-12M-12R	12	3/4	27.0	22	9.5	22.8	22.0	29.7	39.8	36.8
SME-16M-6R	16	3/8	23.8	25	9.5	24.4	22.0	27.9	38.0	30.2
SME-16M-8R	16	1/2	23.8	25	11.9	24.4	22.0	27.9	38.0	35.1
SME-18M-8R	18	1/2	27.0	30	11.9	24.4	22.0	29.7	39.8	36.8
SME-18M-12R	18	3/4	27.0	30	15.1	24.4	22.0	29.7	39.8	36.8
SME-20M-8R	20	1/2	34.9	32	11.9	26.0	22.0	34.5	44.6	41.7
SME-20M-12R	20	3/4	34.9	32	15.9	26.0	22.0	34.5	44.6	41.7
SME-22M-12R	22	3/4	34.9	32	15.9	26.0	22.0	34.5	44.6	41.7
SME-22M-16R	22	1	34.9	32	18.3	26.0	22.0	34.5	44.6	46.5
SME-25M-12R	25	3/4	34.9	38	15.9	31.3	26.5	36.8	49.1	41.7
SME-25M-16R	25	1	34.9	38	21.8	31.3	26.5	36.8	49.1	46.5

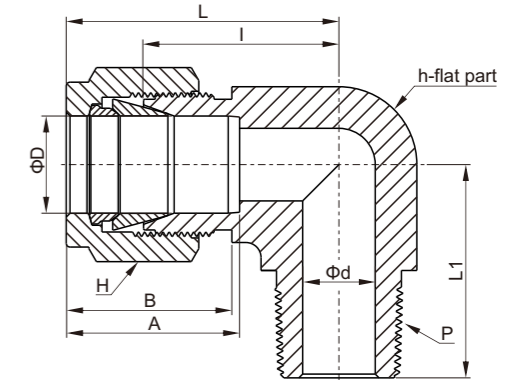
SME
card sleeve male thread elbow



British Tube—NPT thread

Model	D-Tube outside diameter (in.)	P-NPT thread spec	hexagonal width(in.)		size(mm)					
			h	H	d-min diameter	A	B	I	L	L1
SME-2-2N	1/8	1/8	1/2	7/16	2.28	12.70	15.24	18.00	24.30	18.80
SME-2-4N	1/8	1/4	1/2	7/16	2.28	12.70	15.24	18.00	24.30	23.36
SME-3-2N	3/16	1/8	1/2	1/2	3.04	13.71	16.00	18.79	25.40	18.79
SME-3-4N	3/16	1/4	1/2	1/2	3.04	13.71	16.00	18.79	25.40	23.36
SME-4-2N	1/4	1/8	1/2	9/16	4.82	15.24	17.78	19.55	26.92	18.79
SME-4-4N	1/4	1/4	1/2	9/16	4.82	15.24	17.78	19.55	26.92	23.36
SME-4-6N	1/4	3/8	5/8	9/16	4.82	15.24	17.78	22.35	29.71	26.16
SME-4-8N	1/4	1/2	13/16	9/16	4.82	15.24	17.78	24.38	31.75	33.02
SME-5-2N	5/16	1/8	9/16	5/8	4.82	16.25	18.54	21.33	28.70	19.81
SME-5-4N	5/16	1/4	9/16	5/8	6.35	16.25	18.54	21.33	28.70	24.38
SME-5-6N	5/16	3/8	11/16	5/8	6.35	16.25	18.54	23.11	30.48	26.16
SME-6-2N	3/8	1/8	5/8	11/16	4.82	16.76	19.30	23.11	30.48	20.82
SME-6-4N	3/8	1/4	5/8	11/16	7.11	16.76	19.30	23.11	30.48	25.40
SME-6-6N	3/8	3/8	5/8	11/16	7.11	16.76	19.30	23.87	31.24	26.16
SME-6-8N	3/8	1/2	13/16	11/16	7.11	16.76	19.30	25.90	33.27	33.02
SME-6-12N	3/8	3/4	1-1/16	11/16	7.11	16.76	19.30	29.71	37.08	36.83
SME-8-4N	1/2	1/4	13/16	7/8	7.11	22.86	21.84	25.90	36.06	28.19
SME-8-6N	1/2	3/8	13/16	7/8	9.65	22.86	21.84	25.90	36.06	28.19
SME-8-8N	1/2	1/2	13/16	7/8	10.41	22.86	21.84	25.90	36.06	33.02
SME-8-12N	1/2	3/4	1-1/16	7/8	10.41	22.86	21.84	29.71	39.87	36.83
SME-10-6N	5/8	3/8	15/16	1	9.65	24.38	21.84	27.94	38.10	30.22
SME-10-8N	5/8	1/2	15/16	1	11.93	24.38	21.84	27.94	38.10	35.10
SME-10-12N	5/8	3/4	1-1/16	1	12.70	24.38	21.84	29.71	39.87	36.83
SME-12-8N	3/4	1/2	1-1/16	1-1/8	11.93	24.38	21.84	29.71	39.87	36.83
SME-12-12N	3/4	3/4	1-1/16	1-1/8	15.74	24.38	21.84	29.71	39.87	36.83
SME-14-12N	7/8	3/4	1-3/8	1-1/4	15.74	25.90	21.84	34.54	44.70	41.65
SME-16-12N	1	3/4	1-3/8	1-1/2	15.74	31.24	26.41	36.83	49.02	41.65
SME-16-16N	1	1	1-3/8	1-1/2	22.35	31.24	26.41	36.83	49.02	46.48
SME-20-20N	1-1/4	1-1/4	1-11/16	1-7/8	27.69	41.15	38.86	44.45	66.55	47.75
SME-24-24N	1-1/2	1-1/2	2	2-1/4	34.04	50.04	45.21	50.80	77.98	60.45
SME-32-32N	2	2	2-3/4	3	45.97	67.56	62.74	69.85	107.19	70.61

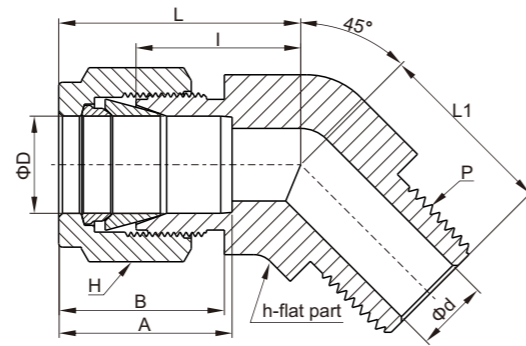
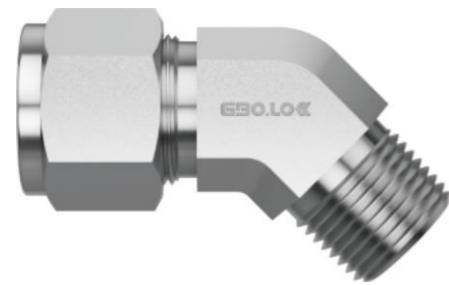
SME
card sleeve male thread elbow



British Tube—ISO taper thread (PT)

Model	D-Tube outside diameter (in.)	P-PT thread spec	hexagonal width(in.)		size(mm)					
			h	H	d-min diameter	A	B	I	L	L1
SME-4-2R	1/4	1/8	1/2	9/16	4.82	15.24	17.78	19.55	26.92	18.79
SME-4-4R	1/4	1/4	1/2	9/16	4.82	15.24	17.78	19.55	26.92	23.36
SME-4-6R	1/4	3/8	5/8	9/16	4.82	15.24	17.78	22.35	29.71	26.16
SME-4-8R	1/4	1/2	13/16	9/16	4.82	15.24	17.78	24.38	31.75	33.02
SME-5-4R	5/16	1/4	9/16	5/8	6.35	16.25	18.54	21.33	28.70	24.38
SME-6-4R	3/8	1/4	5/8	11/16	7.11	16.76	19.30	23.11	30.48	25.40
SME-6-6R	3/8	3/8	5/8	11/16	7.11	16.76	19.30	23.87	31.24	26.16
SME-8-6R	1/2	3/8	13/16	7/8	9.65	22.86	21.84	25.91	36.07	28.20
SME-8-8R	1/2	1/2	13/16	7/8	10.41	22.86	21.84	25.91	36.07	33.02

SHME
45° card sleeve male thread elbow

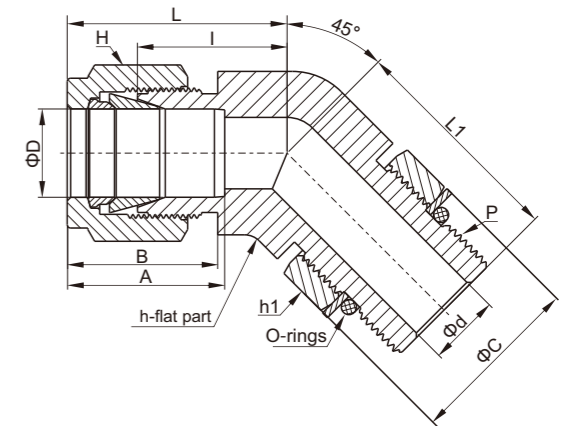


British Tube—NPT thread

Model	D-Tube outside diameter (in.)	P-NPT thread spec	hexagonal width(in.)		size(mm)					
			h	H	d-min diameter	A	B	I	L	L1
SHME-4-2N	1/4	1/8	1/2	9/16	4.82	15.24	17.78	17.27	24.63	16.51
SHME-4-4N	1/4	1/4	1/2	9/16	4.82	15.24	17.78	17.27	24.63	21.08
SHME-6-2N	3/8	1/8	5/8	11/16	4.82	16.76	19.30	20.57	27.94	18.28
SHME-6-4N	3/8	1/4	5/8	11/16	7.11	16.76	19.30	20.57	27.94	22.86
SHME-6-6N	3/8	3/8	13/16	11/16	7.11	16.76	19.30	21.84	29.21	24.13
SHME-8-6N	1/2	3/8	13/16	7/8	9.65	22.86	21.84	21.84	32.00	24.13
SHME-8-8N	1/2	1/2	13/16	7/8	10.41	22.86	21.84	21.84	32.00	28.95

ISO taper threads can be provided upon request

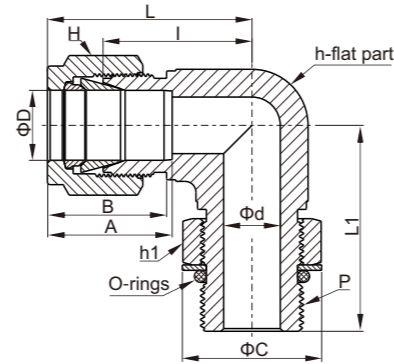
SPHME
45° card sleeve male thread position adjustable elbow



British Tube—SAE/MS thread

Model	D-Tube outside diameter (in.)	P-SAE/MS thread spec	hexagonal width(in.)			size(mm)						
			h	h1	H	d-min diameter	A	B	I	L	L1	C
SPHME-4-7U	1/4	7/16-20	1/2	9/16	9/16	4.83	15.24	17.78	18.29	25.64	25.65	16.51
SPHME-6-9U	3/8	9/16-18	5/8	11/16	11/16	7.11	16.76	19.30	20.57	27.94	28.19	20.07
SPHME-8-12U	1/2	3/4-16	13/16	7/8	7/8	10.41	22.86	21.84	21.84	32.00	32.26	25.65
SPHME-12-17U	3/4	1-1/16-12	1-1/8	1-1/4	1-1/8	15.75	24.38	21.84	29.72	39.88	47.24	36.58
SPHME-16-21U	1	1-5/16-12	1-3/8	1-1/2	1-1/2	22.35	31.24	26.42	35.31	47.50	50.55	43.94

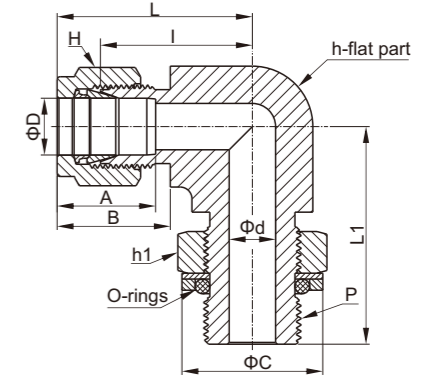
SPME
card sleeve male thread position adjustable elbow



British Tube—SAE/MS thread

Model	D-Tube outside diameter (in.)	P-SAE/MS thread spec	hexagonal width(in.)			size(mm)						
			h	h1	H	d-min diameter	A	B	I	L	L1	C
SPME-4-7U	1/4	7/16-20	1/2	9/16	9/16	4.83	15.24	17.78	21.08	28.45	28.45	16.51
SPME-4-9U	1/4	9/16-18	5/8	11/16	9/16	4.83	15.24	17.78	23.11	30.48	32.26	20.07
SPME-5-8U	5/16	1/2-20	9/16	5/8	5/8	5.84	16.26	18.54	22.86	30.23	29.46	18.29
SPME-6-9U	3/8	9/16-18	5/8	11/16	11/16	7.11	16.76	19.30	24.64	32.00	32.26	20.07
SPME-6-12U	3/8	3/4-16	13/16	7/8	11/16	7.11	16.76	19.30	27.43	34.80	37.85	25.65
SPME-8-12U	1/2	3/4-16	13/16	7/8	7/8	10.41	22.86	21.84	27.43	37.59	37.85	25.65
SPME-10-14U	5/8	7/8-14	15/16	1	1	12.70	24.38	21.84	29.46	39.62	43.43	29.46
SPME-12-17U	3/4	1-1/16-12	1-1/16	1-1/4	1-1/8	15.75	24.38	21.84	31.24	41.40	48.77	36.58
SPME-14-19U	7/8	1-3/16-12	1-3/16	1-3/8	1-1/4	18.29	25.91	21.84	33.02	43.18	50.55	40.39
SPME-16-21U	1	1-5/16-12	1-3/8	1-1/2	1-1/2	22.35	31.24	26.42	38.35	50.55	53.59	43.94
SPME-20-26U	1-1/4	1-5/8-12	1-11/16	1-7/8	1-7/8	27.69	41.15	38.86	45.72	67.82	58.17	54.86
SPME-24-30U	1-1/2	1-7/8-12	2	2-1/8	2-1/4	34.04	50.04	45.21	50.80	77.98	60.45	62.23
SPME-32-40U	2	2-1/2-12	2-3/4	2-3/4	3	45.97	67.56	62.74	69.85	107.19	71.63	80.26

SPME
card sleeve male thread position adjustable elbow



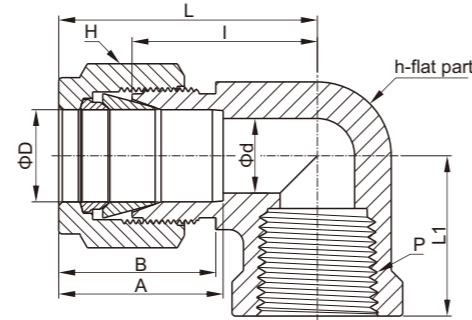
British Tube—ISO Parallel thread

Model	D-Tube outside diameter (in.)	P-ISO parallel thread spec	hexagonal width(in.)			size(mm)						
			h	h1	H	d-min diameter	A	B	I	L	L1	C
SPME-4-2G	1/4	1/8	1/2	9/16	9/16	4.06	15.24	17.78	19.56	26.92	26.42	17.27
SPME-4-4G	1/4	1/4	5/8	3/4	9/16	4.83	15.24	17.78	21.59	28.96	32.26	22.86
SPME-6-4G	3/8	1/4	5/8	3/4	11/16	5.84	16.76	19.30	23.11	30.48	32.26	22.86
SPME-6-6G	3/8	3/8	13/16	7/8	11/16	7.11	16.76	19.30	25.91	33.27	37.08	26.42
SPME-8-4G	1/2	1/4	13/16	3/4	7/8	5.84	22.86	21.84	25.91	36.07	35.05	26.42
SPME-8-6G	1/2	3/8	13/16	7/8	7/8	7.87	22.86	21.84	25.91	36.07	37.08	22.86
SPME-8-8G	1/2	1/2	15/16	1-1/16	7/8	10.41	22.86	21.84	27.94	38.10	43.43	26.42
SPME-10-8G	5/8	1/2	15/16	1-1/16	1	11.94	24.38	21.84	27.94	38.10	43.43	32.00
SPME-12-8G	3/4	1/2	1-1/16	1-1/16	1-1/8	11.94	24.38	21.84	29.72	39.88	45.21	32.00
SPME-12-12G	3/4	3/4	1-1/16	1-3/8	1-1/8	15.75	24.38	21.84	29.72	39.88	48.77	41.15
SPME-16-12G	1	3/4	1-3/8	1-3/8	1-1/2	15.75	31.24	26.42	36.83	49.02	53.34	41.15
SPME-16-16G	1	1	1-3/8	1-3/8	1-1/2	19.81	31.24	26.42	36.83	49.02	53.59	48.51

Metric Tube—ISO Parallel thread

Model	D-Tube outside diameter (mm)	P-ISO parallel thread spec	hexagonal width(in.)			size(mm)						
			h	h1	H (mm)	d-min diameter	A	B	I	L	L1	C
SPME-6M-2G	6	1/8	1/2	9/16	14	4.0	15.3	17.7	19.6	27.0	26.4	17.3
SPME-6M-4G	6	1/4	5/8	3/4	14	4.8	15.3	17.7	21.6	29.0	32.3	22.9
SPME-8M-2G	8	1/8	9/16	9/16	16	4.0	16.2	18.6	21.3	28.8	27.4	17.3
SPME-8M-4G	8	1/4	5/8	3/4	16	5.9	16.2	18.6	22.4	29.9	32.2	22.9
SPME-10M-4G	10	1/4	13/16	3/4	19	5.9	17.2	19.5	25.9	33.5	35.0	22.9
SPME-10M-6G	10	3/8	13/16	7/8	19	7.9	17.2	19.5	25.9	33.5	37.1	26.4
SPME-12M-4G	12	1/4	13/16	3/4	22	5.9	22.8	22.0	25.9	36.0	35.0	22.9
SPME-12M-6G	12	3/8	13/16	7/8	22	7.9	22.8	22.0	25.9	36.0	37.1	26.4
SPME-12M-8G	12	1/2	15/16	1-1/16	22	9.5	22.8	22.0	27.9	38.0	43.4	32.0
SPME-12M-12G	12	3/4	1-1/16	1-3/8	22	9.5	22.8	22.0	29.7	39.8	48.8	41.1

SFE
card sleeve female thread elbow



British Tube—NPT thread

Model	D-Tube outside diameter(in.)	P-NPT thread spec	hexagonal width(in.)		size(mm)					
			h	H	d-min diameter	A	B	I	L	L1
SFE-2-2N	1/8	1/8	1/2	7/16	2.28	12.70	15.24	18.03	24.63	19.05
SFE-2-4N	1/8	1/4	11/16	7/16	2.28	12.70	15.24	20.82	27.43	22.35
SFE-3-2N	3/16	1/8	1/2	1/2	3.04	13.71	16.00	18.79	25.40	19.05
SFE-4-2N	1/4	1/8	1/2	9/16	4.82	15.24	17.78	19.55	26.92	19.05
SFE-4-4N	1/4	1/4	11/16	9/16	4.82	15.24	17.78	22.35	29.71	22.35
SFE-4-6N	1/4	3/8	13/16	9/16	4.82	15.24	17.78	24.38	31.75	22.35
SFE-4-8N	1/4	1/2	1	9/16	4.82	15.24	17.78	27.17	34.54	28.44
SFE-5-2N	5/16	1/8	9/16	5/8	6.35	16.25	18.54	21.33	28.70	19.05
SFE-5-4N	5/16	1/4	11/16	5/8	6.35	16.25	18.54	23.11	30.48	22.35
SFE-6-2N	3/8	1/8	5/8	11/16	7.11	16.76	19.30	23.11	30.48	19.05
SFE-6-4N	3/8	1/4	11/16	11/16	7.11	16.76	19.30	23.87	31.24	22.35
SFE-6-6N	3/8	3/8	13/16	11/16	7.11	16.76	19.30	25.90	33.27	22.35
SFE-6-8N	3/8	1/2	1	11/16	7.11	16.76	19.30	28.70	36.06	28.44
SFE-8-4N	1/2	1/4	13/16	7/8	10.41	22.86	21.84	25.90	36.06	22.35
SFE-8-6N	1/2	3/8	13/16	7/8	10.41	22.86	21.84	25.90	36.06	22.35
SFE-8-8N	1/2	1/2	1	7/8	10.41	22.86	21.84	28.70	38.86	37.00
SFE-10-6N	5/8	3/8	15/16	1	12.70	24.38	21.84	27.94	38.10	22.35
SFE-10-8N	5/8	1/2	1-1/16	1	12.70	24.38	21.84	29.71	39.87	28.44
SFE-12-8N	3/4	1/2	1-1/16	1-1/8	15.74	24.38	21.84	29.71	39.87	28.44
SFE-12-12N	3/4	3/4	1-3/8	1-1/8	15.74	24.38	21.84	34.54	44.70	31.75
SFE-14-12N	7/8	3/4	1-3/8	1-1/4	18.28	25.90	21.84	34.54	44.70	31.75
SFE-16-12N	1	3/4	1-3/8	1-1/2	22.35	31.24	26.41	36.83	49.02	31.75
SFE-16-16N	1	1	1-11/16	1-1/2	22.35	31.24	26.41	41.40	53.59	38.10

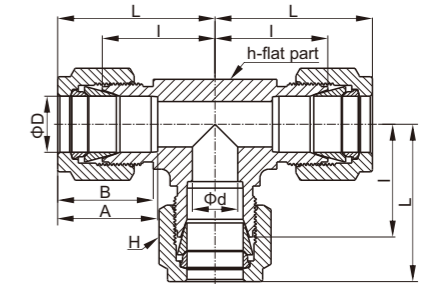
ISO taper threads can be provided upon request

Metric Tube—NPT thread

Model	D-Tube outside diameter(mm)	P-NPT thread spec	hexagonal width(mm)		size(mm)					
			h	H	d-min diameter	A	B	I	L	L1
SFE-6M-4N	6	1/4	17.5	14	4.8	15.3	17.7	22.4	29.8	22.40
SFE-6M-6N	6	3/8	20.6	14	4.8	15.3	17.7	24.4	31.7	22.40
SFE-6M-8N	6	1/2	25.4	14	4.8	15.3	17.7	27.2	34.6	28.40
SFE-8M-4N	8	1/4	17.5	16	6.4	16.2	18.6	23.1	30.6	22.40
SFE-8M-8N	8	1/2	20.6	16	6.4	16.2	18.6	28.0	35.2	28.40
SFE-10M-4N	10	1/4	17.5	19	7.9	17.2	19.5	25.9	33.5	22.40
SFE-10M-6N	10	3/8	20.6	19	7.9	17.2	19.5	25.9	33.5	22.40
SFE-10M-8N	10	1/2	25.4	19	7.9	17.2	19.5	28.7	36.1	28.40
SFE-12M-6N	12	3/8	20.6	22	9.5	22.8	22.0	25.9	36.2	22.35
SFE-12M-8N	12	1/2	25.4	22	9.5	22.8	22.0	28.7	38.8	28.40

ISO taper threads can be provided upon request

SUT
card sleeve three-way joint



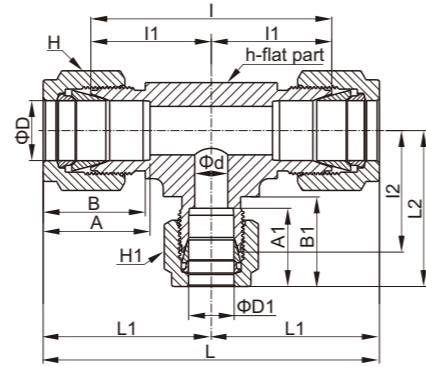
British Tube

Model	D-Tube outside diameter(in.)	hexagonal width(in.)		d-min diameter	size(mm)			
		h	H		A	B	I	L
SUT-1	1/16	3/8	5/16	1.27	8.63	10.92	14.00	18.03
SUT-2	1/8	3/8	7/16	2.28	12.70	15.24	15.80	22.35
SUT-3	3/16	1/2	1/2	3.04	13.71	16.00	18.54	25.14
SUT-4	1/4	1/2	9/16	4.82	15.24	17.78	20.10	27.40
SUT-5	5/16	5/8	5/8	6.35	16.25	18.54	22.35	29.71
SUT-6	3/8	5/8	11/16	7.11	16.76	19.30	23.11	30.48
SUT-8	1/2	13/16	7/8	10.41	22.86	21.84	25.90	36.06
SUT-10	5/8	1	1	12.70	24.38	21.84	28.70	38.86
SUT-12	3/4	1-1/16	1-1/8	15.74	24.38	21.84	29.71	39.87
SUT-14	7/8	1-3/8	1-1/4	18.28	25.90	21.84	34.54	44.70
SUT-16	1	1-3/8	1-1/2	22.35	31.24	26.41	36.83	49.02
SUT-20	1-1/4	1-11/16	1-7/8	27.69	41.15	38.86	44.45	66.55
SUT-24	1-1/2	2	2-1/4	34.04	50.04	45.21	50.80	77.98
SUT-32	2	2-3/4	3	45.97	67.56	62.74	69.85	107.19

Metric Tube

Model	D-Tube outside diameter(mm)	hexagonal width(mm)		d-min diameter	size(mm)			
		h	H		A	B	I	L
SUT-2M	2	9.5	12	1.7	12.9	15.3	15.7	22.3
SUT-3M	3	9.5	12	2.4	12.9	15.3	15.7	22.3
SUT-4M	4	12.7	12	2.4	13.7	16.1	18.8	25.4
SUT-6M	6	12.7	14	4.8	15.3	17.7	19.6	27.0
SUT-8M	8	15.9	16	6.4	16.2	18.6	22.4	29.9
SUT-10M	10	17.5	19	7.9	17.2	19.5	23.9	31.5
SUT-12M	12	20.6	22	9.5	22.8	22.0	25.9	36.0
SUT-15M	15	25.4	25	11.9	24.4	22.0	28.7	38.8
SUT-16M	16	25.4	25	12.7	24.4	22.0	28.7	38.8
SUT-18M	18	27.0	30	15.1	24.4	22.0	29.7	38.8
SUT-20M	20	34.9	32	15.9	26.0	22.0	34.5	44.6
SUT-22M	22	34.9	32	18.3	26.0	22.0	34.5	44.6
SUT-25M	25	34.9	38	21.8	31.3	26.5	36.8	49.1
SUT-28M	28	41	46	21.8	36.6	36.6	43.2	64.0
SUT-30M	30	46	50	26.2	39.6	39.2	48.3	69.9
SUT-32M	32	46	50	28.6	42.0	41.6	49.3	72.3
SUT-38M	38	55	60	33.7	49.4	47.9	56.4	84.0

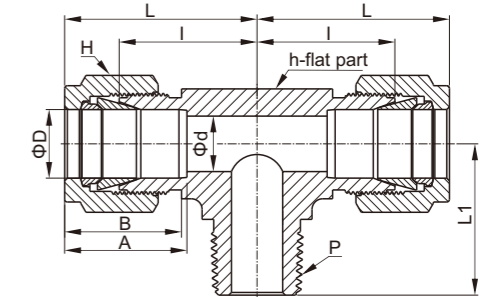
SRUT
card sleeve variable diameter tee joint



British Tube

Model	D-Tube outside diameter (in.)	D1-Tube outside diameter (in.)	hexagonal width(in.)			size(mm)										
			h	H	H1	d-min diameter	A	A1	B	B1	I	I1	I2	L	L1	L2
SRUT-6-6-4	3/8	1/4	5/8	11/16	9/16	4.82	16.76	15.24	19.30	17.78	46.22	23.11	21.59	60.96	30.48	28.95
SRUT-8-8-4	1/2	1/4	13/16	7/8	9/16	4.82	22.86	15.24	21.84	17.78	51.80	25.90	24.38	72.13	36.06	31.75
SRUT-8-8-6	1/2	3/8	13/16	7/8	11/16	7.11	22.86	16.76	21.84	19.30	51.80	25.90	25.90	72.13	36.06	33.27
SRUT-10-10-6	5/8	3/8	1	1	11/16	7.11	24.38	16.76	21.84	19.30	57.40	28.70	28.70	77.72	38.86	36.06
SRUT-12-12-6	3/4	3/8	1-1/16	1-1/8	11/16	7.11	24.38	16.76	21.84	19.30	59.43	29.71	29.71	79.75	39.87	37.08
SRUT-12-12-8	3/4	1/2	1-1/16	1-1/8	7/8	10.41	24.38	22.86	21.84	21.84	59.43	29.71	29.71	79.75	39.87	39.87
SRUT-16-16-6	1	3/8	1-3/8	1-1/2	1-1/16	7.11	31.24	16.76	26.41	19.30	73.66	36.83	34.54	98.04	49.02	41.91
SRUT-16-16-8	1	1/2	1-3/8	1-1/2	7/8	10.41	31.24	21.84	26.41	22.86	73.66	36.83	34.54	98.04	49.02	44.70
SRUT-16-16-12	1	3/4	1-3/8	1-1/2	1-1/8	15.74	31.24	24.38	26.41	21.84	73.66	36.83	34.54	98.04	49.02	44.70

SMBT
branch pipe male thread clamp tee



British Tube—NPT thread

Model	D-Tube outside diameter (in.)	P-NPT thread spec	hexagonal width(in.)			size(mm)				
			h	H	d-min diameter	A	B	I	L	L1
SMBT-2-2N	1/8	1/8	1/2	7/16	2.28	12.70	15.24	18.30	24.91	18.90
SMBT-2-4N	1/8	1/4	1/2	7/16	2.28	12.70	15.24	18.03	24.63	23.36
SMBT-3-2N	3/16	1/8	1/2	1/2	3.04	13.71	16.00	17.78	25.40	18.79
SMBT-4-2N	1/4	1/8	1/2	9/16	4.82	15.24	17.78	19.55	26.92	18.79
SMBT-4-4N	1/4	1/4	1/2	9/16	4.82	15.24	17.78	19.55	26.92	23.36
SMBT-5-2N	5/16	1/8	5/8	5/8	4.82	16.25	18.54	22.35	29.71	20.82
SMBT-6-4N	3/8	1/4	5/8	11/16	7.11	16.76	19.30	23.11	30.48	25.40
SMBT-6-6N	3/8	3/8	5/8	11/16	7.11	16.76	19.30	23.10	30.48	28.19
SMBT-8-6N	1/2	3/8	13/16	7/8	9.65	22.86	21.84	25.90	36.06	28.19
SMBT-8-8N	1/2	1/2	13/16	7/8	10.41	22.86	21.84	25.90	36.06	33.02
SMBT-10-8N	5/8	1/2	1	1	11.93	24.38	21.84	28.70	38.86	35.81
SMBT-12-12N	3/4	3/4	1-1/16	1-1/8	15.74	24.38	21.84	29.71	39.87	36.83

ISO taper threads can be provided upon request

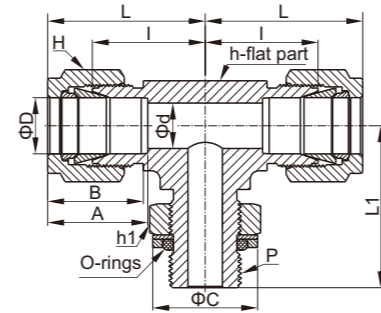
Metric Tube—ISO taper thread (PT)

Model	D-Tube outside diameter (mm)	P-PT thread spec	hexagonal width(in.)			size(mm)				
			h	H	d-min diameter	A	B	I	L	L1
SMBT-3M-2R	3	1/8	12.7	12	2.4	12.9	15.3	17.0	23.6	17.8
SMBT-3M-4R	3	1/4	12.7	12	2.4	12.9	15.3	18.0	24.6	23.4
SMBT-4M-2R	4	1/8	12.7	12	2.4	13.7	16.1	18.8	25.4	18.8
SMBT-6M-2R	6	1/8	12.7	14	4.8	15.3	17.7	19.6	27.0	18.8
SMBT-6M-4R	6	1/4	14.3	14	4.8	15.3	17.7	19.6	27.0	23.4
SMBT-8M-2R	8	1/8	14.3	16	4.8	16.2	18.6	21.3	28.8	19.8
SMBT-8M-4R	8	1/4	14.3	16	6.4	16.2	18.6	21.3	28.8	24.4
SMBT-10M-4R	10	1/4	17.5	19	7.1	17.2	19.5	23.9	31.5	28.2
SMBT-10M-6R	10	3/8	17.5	19	7.9	17.2	19.5	23.9	31.5	28.2
SMBT-12M-4R	12	1/4	20.6	22	7.1	22.8	22.0	25.9	36.0	28.2
SMBT-12M-6R	12	3/8	20.6	22	9.5	22.8	22.0	25.9	36.0	28.2
SMBT-12M-8R	12	1/2	20.6	22	9.5	22.8	22.0	25.9	36.0	33.0
SMBT-16M-6R	16	3/8	25.4	25	9.5	24.4	22.0	27.9	38.0	30.2
SMBT-16M-8R	16	1/2	25.4	25	11.9	24.4	22.0	27.9	38.0	35.1
SMBT-20M-12R	20	3/4	31.8	32	15.9	26.0	22.0	34.5	44.6	41.7

NPT tapered thread can be provided upon request.

SPMBT

branch pipe male thread position adjustable card sleeve tee



British Tube—ISO Parallel thread

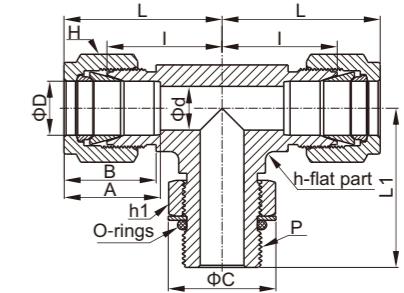
Model	D-Tube outside diameter(in.)	P-ISO parallel thread spec	hexagonal width(in.)			size(mm)						
			h	h1	H	d-min diameter	A	B	I	L	L1	C
SPMBT-4-2G	1/4	1/8	1/2	9/16	9/16	4.06	15.24	17.78	19.56	26.92	26.42	17.27
SPMBT-4-4G	1/4	1/4	5/8	3/4	9/16	4.83	15.24	17.78	21.59	28.96	32.26	22.86
SPMBT-6-4G	3/8	1/4	5/8	3/4	11/16	5.08	15.24	19.30	23.11	30.48	32.26	22.86
SPMBT-8-6G	1/2	3/8	13/16	7/8	7/8	7.87	22.86	21.84	25.91	36.07	37.08	26.42
SPMBT-8-8G	1/2	1/2	15/16	1-1/16	7/8	10.41	22.86	21.84	27.94	38.10	43.43	32.00
SPMBT-10-8G	5/8	1/2	15/16	1-1/16	1	11.94	24.38	21.84	27.94	38.10	43.43	32.00
SPMBT-12-8G	3/4	1/2	1-1/16	1-1/16	1-1/8	11.94	24.38	21.84	29.72	39.88	45.21	32.00
SPMBT-12-12G	3/4	3/4	1-1/16	1-3/8	1-1/8	15.75	24.38	21.84	29.72	39.88	48.77	41.15
SPMBT-16-16G	1	1	1-3/8	1-5/8	1-1/2	19.81	31.24	26.42	36.83	49.02	53.59	48.51

Metric Tube—ISO Parallel thread

Model	D-Tube outside diameter (mm)	P-ISO parallel thread spec	hexagonal width(in.)			size(mm)						
			h	h1	H	d-min diameter	A	B	I	L	L1	C
SPMBT-6M-2G	6	1/8	1/2	9/16	14	4.0	15.3	17.7	19.6	27.0	26.4	17.3
SPMBT-6M-4G	6	1/4	5/8	3/4	14	4.8	15.3	17.7	21.6	29.0	32.3	22.9
SPMBT-8M-2G	8	1/8	9/16	9/16	16	4.0	16.2	18.6	21.3	28.8	27.4	17.3
SPMBT-8M-4G	8	1/4	5/8	3/4	16	5.9	16.2	18.6	22.4	29.9	32.2	22.9
SPMBT-10M-4G	10	1/4	13/16	3/4	19	5.9	17.2	19.5	25.9	33.5	35.0	22.9
SPMBT-12M-6G	12	3/8	13/16	7/8	22	7.9	22.8	22.0	25.9	36.0	37.1	26.4
SPMBT-12M-8G	12	1/2	15/16	1-1/16	22	9.5	22.8	22.0	27.9	38.0	43.4	32.0

SPMBT

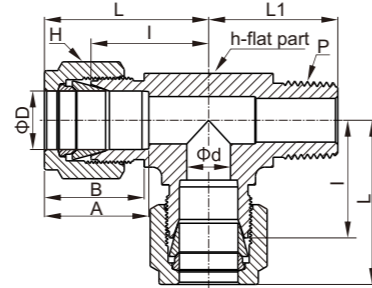
branch pipe male thread position adjustable card sleeve tee



British Tube—SAE/MS thread

Model	D-Tube outside diameter(in.)	P-SAE/MS thread spec	hexagonal width(in.)			size(mm)						
			h	h1	H	d-min diameter	A	B	I	L	L1	C
SPMBT-4-7U	1/4	7/16-20	1/2	9/16	9/16	4.83	15.24	17.78	21.08	28.45	28.45	16.51
SPMBT-6-9U	3/8	9/16-18	5/8	11/16	11/16	7.11	16.76	19.30	24.64	32.00	32.26	20.07
SPMBT-8-12U	1/2	3/4-16	13/16	7/8	7/8	10.41	22.86	21.84	27.43	37.59	37.85	25.65
SPMBT-12-17U	3/4	1-1/16-12	1-1/16	1-1/4	1-1/8	15.75	24.38	21.84	31.24	41.40	48.77	36.58
SPMBT-16-21U	1	1-5/16-12	1-3/8	1-1/2	1-1/2	22.35	31.24	26.42	38.35	50.55	53.59	43.94
SPMBT-20-26U	1-1/4	1-5/8-12	1-11/16	1-7/8	1-7/8	27.69	41.15	38.86	45.72	67.82	58.17	54.86
SPMBT-24-30U	1-1/2	1-7/8-12	2	2-1/8	2-1/4	34.04	50.04	45.21	50.80	77.98	60.45	62.23
SPMBT-32-40U	2	2-1/2-12	2-3/4	2-3/4	3	45.97	67.56	62.74	69.85	107.19	71.63	80.26

SMRT
supervisor male thread card sleeve tee



British Tube—NPT thread

Model	D-Tube outside diameter(in.)	P-NPT thread spec	hexagonal width(in.)		size(mm)					
			h	H	d-min diameter	A	B	I	L	L1
SMRT-2-2N	1/8	1/8	1/2	7/16	2.28	12.70	15.24	18.30	24.91	18.90
SMRT-2-4N	1/8	1/4	1/2	7/16	2.28	12.70	15.24	18.03	24.63	23.36
SMRT-3-2N	3/16	1/8	1/2	1/2	3.04	13.71	16.00	17.78	25.40	18.79
SMRT-4-2N	1/4	1/8	1/2	9/16	4.82	15.24	17.78	19.55	26.92	18.79
SMRT-4-4N	1/4	1/4	1/2	9/16	4.82	15.24	17.78	19.55	26.92	23.36
SMRT-5-2N	5/16	1/8	5/8	5/8	4.82	16.25	18.54	22.35	29.71	20.82
SMRT-6-4N	3/8	1/4	5/8	11/16	7.11	16.76	19.30	23.11	30.48	25.40
SMRT-6-6N	3/8	3/8	5/8	11/16	7.11	16.76	19.30	23.10	30.48	28.19
SMRT-8-6N	1/2	3/8	13/16	7/8	9.65	22.86	21.84	25.90	36.06	28.19
SMRT-8-8N	1/2	1/2	13/16	7/8	10.41	22.86	21.84	25.90	36.06	33.02
SMRT-10-8N	5/8	1/2	1	1	11.93	24.38	21.84	28.70	38.86	35.81
SMRT-12-12N	3/4	3/4	1-1/16	1-1/8	15.74	24.38	21.84	29.71	39.87	36.83

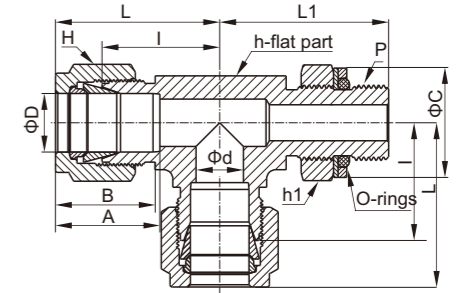
ISO taper threads can be provided upon request

Metric Tube—ISO taper thread(PT)

Model	D-Tube outside diameter(mm)	P-PT thread spec	hexagonal width(in.)		size(mm)					
			h	H	d-min diameter	A	B	I	L	L1
SMBT-3M-2R	3	1/8	12.7	12	2.4	12.9	15.3	17.0	23.6	17.8
SMBT-3M-4R	3	1/4	12.7	12	2.4	12.9	15.3	18.0	24.6	23.4
SMBT-4M-2R	4	1/8	12.7	12	2.4	13.7	16.1	18.8	25.4	18.8
SMBT-6M-2R	6	1/8	12.7	14	4.8	15.3	17.7	19.6	27.0	18.8
SMBT-6M-4R	6	1/4	14.3	14	4.8	15.3	17.7	19.6	27.0	23.4
SMBT-8M-2R	8	1/8	14.3	16	4.8	16.2	18.6	21.3	28.8	19.8
SMBT-8M-4R	8	1/4	14.3	16	6.4	16.2	18.6	21.3	28.8	24.4
SMBT-10M-4R	10	1/4	17.5	19	7.1	17.2	19.5	23.9	31.5	28.2
SMBT-10M-6R	10	3/8	17.5	19	7.9	17.2	19.5	23.9	31.5	28.2
SMBT-12M-4R	12	1/4	20.6	22	7.1	22.8	22.0	25.9	36.0	28.2
SMBT-12M-6R	12	3/8	20.6	22	9.5	22.8	22.0	25.9	36.0	28.2
SMBT-12M-8R	12	1/2	20.6	22	9.5	22.8	22.0	25.9	36.0	33.0
SMBT-16M-6R	16	3/8	25.4	25	9.5	24.4	22.0	27.9	38.0	30.2
SMBT-16M-8R	16	1/2	25.4	25	11.9	24.4	22.0	27.9	38.0	35.1
SMBT-20M-12R	20	3/4	31.8	32	15.9	26.0	22.0	34.5	44.6	41.7

NPT tapered thread can be provided upon request.

SPMRT
supervisor male thread position adjustable card sleeve tee



British Tube—ISO Parallel thread

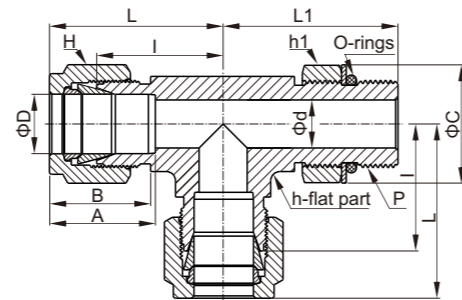
Model	D-Tube outside diameter(in.)	P-ISO parallel thread spec	hexagonal width(in.)			size(mm)						
			h	h1	H	d-min diameter	A	B	I	L	L1	C
SPMRT-4-2G	1/4	1/8	1/2	9/16	9/16	4.06	15.24	17.78	19.56	26.92	26.42	17.27
SPMRT-4-4G	1/4	1/4	5/8	3/4	9/16	4.83	15.24	17.78	21.59	28.96	32.26	22.86
SPMRT-6-4G	3/8	1/4	5/8	3/4	11/16	5.84	16.76	19.30	23.11	30.48	32.26	22.86
SPMRT-8-6G	1/2	3/8	13/16	7/8	7/8	7.87	22.86	21.84	25.91	36.07	37.08	26.42
SPMRT-8-8G	1/2	1/2	15/16	1-1/16	7/8	10.41	22.86	21.84	27.94	38.10	43.43	32.00
SPMRT-10-8G	5/8	1/2	15/16	1-1/16	1	11.94	24.38	21.84	27.94	38.10	43.43	32.00
SPMRT-12-8G	3/4	1/2	1-1/16	1-1/16	1-1/8	11.94	24.38	21.84	29.72	39.88	45.21	32.00
SPMRT-12-12G	3/4	3/4	1-1/16	1-3/8	1-1/8	15.75	24.38	21.84	29.72	39.88	48.77	41.15
SPMRT-16-16G	1	1	1-3/8	1-5/8	1-1/2	19.81	31.24	26.42	36.83	49.02	53.59	48.51

Metric Tube—ISO Parallel thread

Model	D-Tube outside diameter(mm)	P-ISO parallel thread spec	hexagonal width(in.)			size(mm)						
			h	h1	H(mm)	d-min diameter	A	B	I	L	L1	C
SPMRT-6M-2G	6	1/8	1/2	9/16	14	4.0	15.3	17.7	19.6	27.0	26.4	17.3
SPMRT-6M-4G	6	1/4	5/8	3/4	14	4.8	15.3	17.7	21.6	29.0	32.2	22.9
SPMRT-8M-2G	8	1/8	9/16	9/16	16	4.0	16.2	18.6	21.3	28.8	27.4	17.3
SPMRT-8M-4G	8	1/4	5/8	3/4	16	6.4	16.2	18.6	22.4	29.9	32.2	22.9
SPMRT-10M-4G	10	1/4	13/16	3/4	19	5.9	17.2	19.5	25.9	33.5	35.0	22.9
SPMRT-12M-6G	12	3/8	13/16	7/8	22	7.9	22.8	22.0	25.9	36.0	37.1	26.4
SPMRT-12M-8G	12	1/2	15/16	1-1/16	22	9.5	22.8	22.0	27.9	38.0	43.4	32.0

SPMRT

supervisor male thread position adjustable card sleeve tee

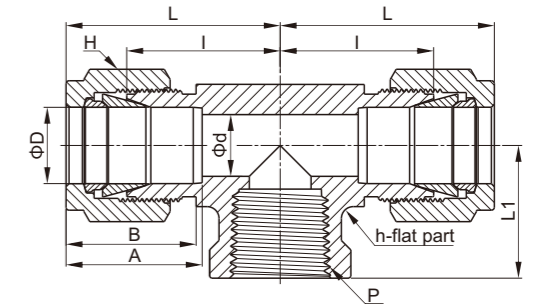


British Tube—SAE/MS thread

Model	D-Tube outside diameter(in.)	P-SAE/MS thread spec	hexagonal width(in.)			size(mm)						
			h	h1	H	d-min diameter	A	B	I	L	L1	C
SPMRT-4-7U	1/4	7/16-20	1/2	9/16	9/16	4.83	15.24	17.78	21.08	28.45	28.45	16.51
SPMRT-6-9U	3/8	9/16-18	5/8	11/16	11/16	7.11	16.76	19.30	24.64	32.00	32.26	20.07
SPMRT-8-12U	1/2	3/4-16	13/16	7/8	7/8	10.41	22.86	21.84	27.43	37.59	37.85	25.65
SPMRT-12-17U	3/4	1-1/16-12	1-1/16	1-1/4	1-1/8	15.75	24.38	21.84	31.24	41.40	48.77	36.58
SPMRT-16-21U	1	1-5/16-12	1-3/8	1-1/2	1-1/2	22.35	31.24	26.42	38.35	50.55	53.59	43.94
SPMRT-20-26U	1-1/4	1-5/8-12	1-11/16	1-7/8	1-7/8	27.69	41.15	38.86	45.72	67.82	58.17	54.86
SPMRT-24-30U	1-1/2	1-7/8-12	2	2-1/8	2-1/4	34.04	50.04	45.21	50.80	77.98	60.45	62.23
SPMRT-32-40U	2	2-1/2-12	2-3/4	2-3/4	3	45.97	67.56	62.74	69.85	107.19	71.63	80.26

SFBT

branch pipe female thread clamp tee



British Tube - NPT thread

Model	D-Tube outside diameter(in.)	P-NPT thread spec	hexagonal width(in.)		size(mm)						
			h	H	d-min diameter	A	B	I	L	L1	
SFBT-2-2N	1/8	1/8	1/2	7/16	2.28	12.70	15.24	18.03	24.63	19.05	
SFBT-4-2N	1/4	1/8	1/2	9/16	4.82	15.24	17.78	19.55	26.92	19.05	
SFBT-4-4N	1/4	1/4	11/16	9/16	4.82	15.24	17.78	22.35	29.71	22.35	
SFBT-6-4N	3/8	1/4	11/16	11/16	7.11	16.76	19.30	23.87	31.24	22.35	
SFBT-6-6N	3/8	3/8	13/16	11/16	7.11	16.76	19.30	25.90	33.27	22.35	
SFBT-6-8N	3/8	1/2	1	11/16	7.11	16.76	19.30	28.70	36.06	28.44	
SFBT-8-4N	1/2	1/4	13/16	7/8	10.41	22.86	21.84	25.90	36.06	22.35	
SFBT-8-6N	1/2	3/8	13/16	7/8	10.41	22.86	21.84	25.90	36.06	22.35	
SFBT-8-8N	1/2	1/2	1	7/8	10.41	22.86	21.84	28.70	38.86	28.44	
SFBT-10-8N	5/8	1/2	1	1	12.70	24.38	21.84	28.70	38.86	28.44	
SFBT-12-12N	3/4	3/4	1-3/8	1-1/8	15.74	24.38	21.84	34.54	44.70	31.75	
SFBT-16-12N	1	3/4	1-3/8	1-1/2	22.35	31.24	26.41	36.83	49.02	31.75	
SFBT-16-16N	1	1	1-11/16	1-1/2	22.35	31.24	26.41	41.40	53.59	38.10	

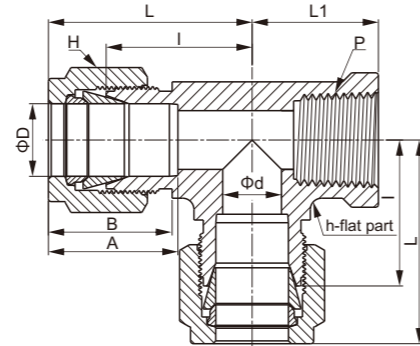
ISO taper threads can be provided upon request

Metric Tube - NPT thread

Model	D-Tube outside diameter(mm)	P-NPT thread spec	hexagonal width(mm)		size(mm)						
			h	H	d-min diameter	A	B	I	L	L1	
SFBT-6M-2N	6	1/8	12.7	14	4.8	15.3	17.7	19.6	27.0	19.0	
SFBT-6M-4N	6	1/4	17.5	14	4.8	15.3	17.7	22.4	29.8	22.4	
SFBT-6M-6N	6	3/8	20.6	14	4.8	15.3	17.7	24.4	31.7	22.4	
SFBT-6M-8N	6	1/2	25.4	14	4.8	15.3	17.7	27.2	34.5	28.4	
SFBT-8M-2N	8	1/8	15.9	16	6.4	16.2	18.6	22.4	29.9	19.0	
SFBT-8M-4N	8	1/4	17.5	16	6.4	16.2	18.6	23.1	30.6	22.4	
SFBT-8M-6N	8	3/8	20.6	16	6.4	16.2	18.6	25.2	32.4	22.4	
SFBT-8M-8N	8	1/2	25.4	16	6.4	16.2	18.6	28.0	35.2	28.4	
SFBT-10M-4N	10	1/4	20.6	19	7.9	17.2	19.5	25.9	33.5	22.4	
SFBT-10M-6N	10	3/8	20.6	19	7.9	17.2	19.5	25.9	33.3	22.4	
SFBT-10M-8N	10	1/2	25.4	19	9.5	17.2	19.5	26.2	33.6	22.4	
SFBT-12M-4N	12	1/4	20.6	22	9.5	22.8	22.0	25.9	36.0	22.4	
SFBT-12M-6N	12	3/8	20.6	22	9.5	22.8	22.0	25.9	36.0	22.4	
SFBT-12M-8N	12	1/2	25.4	22	9.5	22.8	22.0	29.7	40.0	28.4	
SFBT-16M-8N	16	1/2	25.4	25	12.7	24.4	22.0	28.7	38.8	28.4	

ISO taper threads can be provided upon request

SFRT
supervisor female thread card sleeve tee



British Tube - NPT thread

Model	D-Tube outside diameter(in.)	P-NPT thread spec	hexagonal width(in.)		size(mm)					
			h	H	d-min diameter	A	B	I	L	L1
SFRT-2-2N	1/8	1/8	1/2	7/16	2.28	12.70	15.24	18.03	24.63	19.05
SFRT-4-2N	1/4	1/8	1/2	9/16	4.82	15.24	17.78	19.55	26.92	19.05
SFRT-4-4N	1/4	1/4	11/16	9/16	4.82	15.24	17.78	22.35	29.71	22.35
SFRT-6-4N	3/8	1/4	11/16	11/16	7.11	16.76	19.30	23.87	31.24	22.35
SFRT-8-6N	1/2	3/8	13/16	7/8	10.41	22.86	21.84	25.90	36.06	22.35
SFRT-8-8N	1/2	1/2	1	7/8	10.41	22.86	21.84	28.70	39.87	28.44
SFRT-12-12N	3/4	3/4	1-3/8	1-1/8	15.74	24.38	21.84	34.54	44.70	31.75
SFRT-16-12N	1	3/4	1-3/8	1-1/2	22.35	31.24	26.41	36.83	49.02	31.75
SFRT-16-16N	1	1	1-11/16	1-1/2	22.35	31.24	26.41	41.40	53.59	38.10

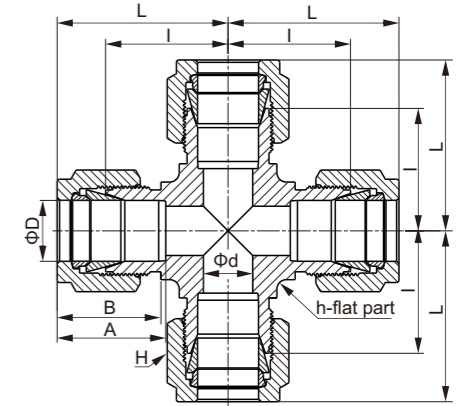
ISO taper threads can be provided upon request

Metric Tube - NPT thread

Model	D-Tube outside diameter(mm)	P-NPT thread spec	hexagonal width(mm)		size(mm)					
			h	H	d-min diameter	A	B	I	L	L1
SFRT-6M-2N	6	1/8	12.7	14	4.8	15.3	17.7	19.6	27.0	19.0
SFRT-6M-4N	6	1/4	17.5	14	4.8	15.3	17.7	22.4	29.8	22.4
SFRT-6M-8N	6	1/2	25.4	14	4.8	15.3	17.7	27.2	34.5	28.4
SFRT-8M-2N	8	1/8	15.9	16	6.4	16.2	18.6	22.4	29.9	19.0
SFRT-8M-4N	8	1/4	17.5	16	6.4	16.2	18.6	23.1	30.6	22.4
SFRT-8M-6N	8	3/8	20.6	16	6.4	16.2	18.6	25.2	32.4	22.4
SFRT-8M-8N	8	1/2	25.4	16	6.4	16.2	18.6	28.0	35.2	28.4
SFRT-12M-4N	12	1/4	20.6	22	9.5	22.8	22.0	25.9	33.5	22.4
SFRT-12M-6N	12	3/8	20.6	22	9.5	22.8	22.0	25.9	36.0	22.4
SFRT-12M-8N	12	1/2	25.4	22	9.5	22.8	22.0	29.7	40.0	28.4
SFRT-16M-8N	16	1/2	25.4	25	12.7	24.4	22.0	29.7	39.8	28.4

ISO taper threads can be provided upon request

SUC
card sleeve four-way joint



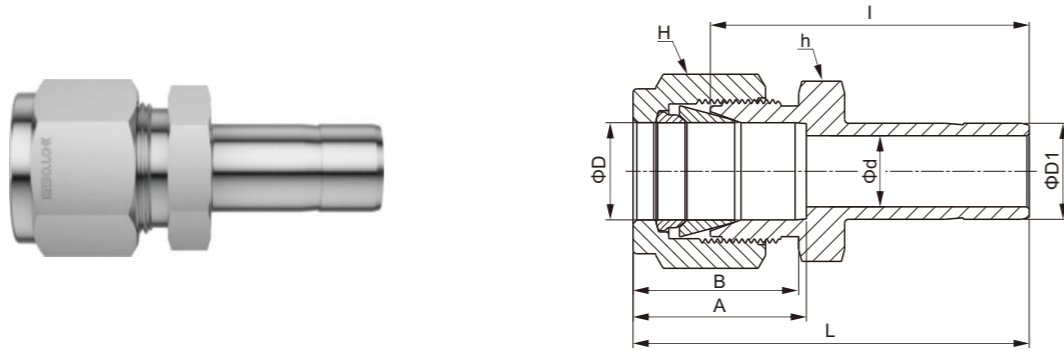
British Tube

Model	D-Tube outside diameter(in.)	hexagonal width(in.)		size(mm)				
		h	H	d-min diameter	A	B	I	L
SUC-1	1/16	3/8	5/16	1.27	8.63	10.92	14.00	18.03
SUC-2	1/8	3/8	7/16	2.28	12.70	15.24	15.74	22.35
SUC-3	3/16	1/2	1/2	3.04	13.71	16.00	18.54	25.14
SUC-4	1/4	1/2	9/16	4.82	15.24	17.78	19.55	26.92
SUC-5	5/16	5/8	5/8	6.35	16.25	18.54	22.35	29.71
SUC-6	3/8	5/8	11/16	7.11	16.76	19.30	23.11	30.48
SUC-8	1/2	13/16	7/8	10.41	22.86	21.84	25.90	36.06
SUC-10	5/8	15/16	1	12.70	24.38	21.84	28.70	38.80
SUC-12	3/4	1-1/16	1-1/8	15.74	24.38	21.84	29.71	39.87
SUC-14	7/8	1-3/8	1-1/4	18.28	25.90	21.84	34.54	44.70
SUC-16	1	1-3/8	1-1/2	22.35	31.24	26.41	36.83	49.02

Metric Tube

Model	D-Tube outside diameter(mm)	hexagonal width(mm)		size(mm)				
		h	H	d-min diameter	A	B	I	L
SUC-3M	3	9.5	12	2.4	12.9	15.3	15.7	22.3
SUC-6M	6	12.7	14	4.8	15.3	17.7	19.6	27.0
SUC-8M	8	15.9	16	6.4	16.2	18.6	22.4	29.9
SUC-10M	10	20.6	19	7.9	17.2	19.5	25.9	33.5
SUC-12M	12	20.6	22	9.5	22.8	22.0	25.9	36.0
SUC-16M	16	23.8	25	12.7	24.4	22.0	26.9	37.0
SUC-18M	18	27.0	30	15.1	24.4	22.0	28.2	38.3
SUC-20M	20	34.9	32	15.9	26.0	22.0	34.5	44.6
SUC-25M	25	34.9	38	21.8	31.3	26.5	36.8	49.1

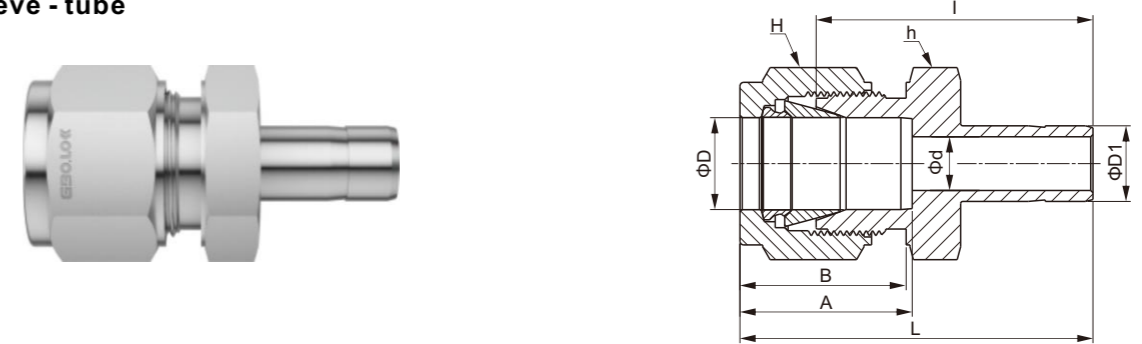
SR
SR sleeve - tube



British Tube-British Tube Fitting

Model	D-Tube outside diameter(in.)	D1-Tube outside diameter(in.)	hexagonal width(in.)		size(mm)				
			h	H	d-min diameter	A	B	I	L
SR-2-1	1/8	1/16	7/16	7/16	0.76	12.70	15.24	22.35	28.95
SR-2-2	1/8	1/8	7/16	7/16	2.03	12.70	15.24	26.92	33.52
SR-2-3	1/8	3/16	7/16	7/16	2.28	12.70	15.24	27.68	34.29
SR-2-4	1/8	1/4	7/16	7/16	2.28	12.70	15.24	29.46	36.06
SR-2-6	1/8	3/8	7/16	7/16	2.28	12.70	15.24	30.98	37.59
SR-2-8	1/8	1/2	9/16	7/16	2.28	12.70	15.24	37.59	44.19
SR-3-2	3/16	1/8	7/16	1/2	2.03	13.71	16.00	28.19	34.79
SR-3-4	3/16	1/4	7/16	1/2	3.04	13.71	16.00	30.48	37.08
SR-4-2	1/4	1/8	1/2	9/16	2.03	15.24	17.78	29.46	36.83
SR-4-3	1/4	3/16	1/2	9/16	3.04	15.24	17.78	30.22	37.59
SR-4-4	1/4	1/4	1/2	9/16	4.82	15.24	17.78	31.75	39.11
SR-4-5	1/4	5/16	1/2	9/16	4.82	15.24	17.78	32.51	39.87
SR-4-6	1/4	3/8	1/2	9/16	4.82	15.24	17.78	33.27	40.64
SR-4-8	1/4	1/2	9/16	9/16	4.82	15.24	17.78	38.86	46.22
SR-4-10	1/4	5/8	11/16	9/16	4.82	15.24	17.78	40.64	48.00
SR-4-12	1/4	3/4	13/16	9/16	4.82	15.24	17.78	41.40	47.75
SR-5-6	5/16	3/8	9/16	5/8	6.35	16.25	18.54	34.54	41.91
SR-5-8	5/16	1/2	9/16	5/8	6.35	16.25	18.54	40.13	47.49
SR-6-4	3/8	1/4	5/8	11/16	4.82	16.76	19.30	34.03	41.40
SR-6-6	3/8	3/8	5/8	11/16	7.11	16.76	19.30	35.81	43.18
SR-6-8	3/8	1/2	5/8	11/16	7.11	16.76	19.30	41.14	48.51
SR-6-10	3/8	5/8	11/16	11/16	7.11	16.76	19.30	42.92	50.29
SR-6-12	3/8	3/4	13/16	11/16	7.11	16.76	19.30	42.92	50.29
SR-8-4	1/2	1/4	13/16	7/8	4.82	22.86	21.84	34.79	44.95
SR-8-6	1/2	3/8	13/16	7/8	7.11	22.86	21.84	36.57	46.73
SR-8-8	1/2	1/2	13/16	7/8	9.90	22.86	21.84	42.16	52.32
SR-8-10	1/2	5/8	13/16	7/8	10.41	22.86	21.84	43.68	53.84
SR-8-12	1/2	3/4	13/16	7/8	10.41	22.86	21.84	43.68	53.84
SR-8-16	1/2	1	1-1/16	7/8	10.41	22.86	21.84	50.03	60.19
SR-10-12	5/8	3/4	15/16	1	12.70	24.38	21.84	44.45	54.61
SR-10-14	5/8	7/8	15/16	1	12.70	24.38	21.84	45.97	56.13
SR-10-16	5/8	1	1-1/16	1	12.70	24.38	21.84	50.80	60.96
SR-12-8	3/4	1/2	1-1/16	1-1/8	9.90	24.38	21.84	44.45	54.61
SR-12-16	3/4	1	1-1/16	1-1/8	15.74	24.38	21.84	52.32	62.48

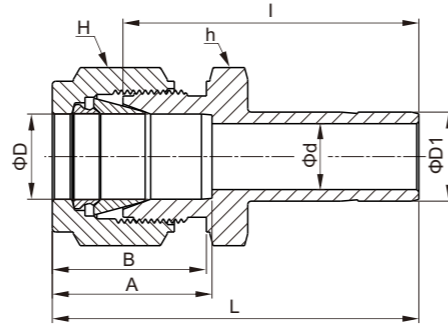
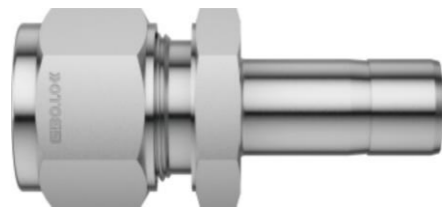
SR
SR sleeve - tube



Metric Tube - Metric Tube Fitting

Model	D-Tube outside diameter(mm)	D1-Tube outside diameter(mm)	hexagonal width(mm)		size(mm)				
			h	H	d-min diameter	A	B	I	L
SR-3M-4M	3	4	12	12	2.4	12.9	15.3	28.4	35.0
SR-3M-6M	3	6	12	12	2.4	12.9	15.3	29.5	36.1
SR-3M-10M	3	10	14	12	2.4	12.9	15.3	31.8	38.4
SR-4M-6M	4	6	12	12	2.4	13.7	16.1	30.5	37.1
SR-6M-3M	6	3	14	14	1.8	15.3	17.7	29.5	36.9
SR-6M-8M	6	8	14	14	4.8	15.3	17.7	32.5	39.9
SR-6M-10M	6	10	14	14	4.8	15.3	17.7	33.3	40.7
SR-6M-12M	6	12	14	14	4.8	15.3	17.7	38.9	46.3
SR-8M-6M	8	6	15	16	4.6	16.2	18.6	32.8	40.3
SR-8M-10M	8	10	15	16	6.4	16.2	18.6	34.5	42.0
SR-8M-12M	8	12	15	16	6.4	16.2	18.6	40.1	47.6
SR-10M-6M	10	6	18	19	4.6	17.2	19.5	34.8	42.4
SR-10M-8M	10	8	18	19	6.4	17.2	19.5	35.8	43.4
SR-10M-12M	10	12	18	19	7.9	17.2	19.5	42.2	49.8
SR-10M-15M	10	15	18	19	7.9	17.2	19.5	43.7	51.3
SR-10M-18M	10	18	22	19	7.9	17.2	19.5	43.7	51.3
SR-12M-6M	12	6	22	22	4.6	22.8	22.0	34.8	44.9
SR-12M-8M	12	8	22	22	6.4	22.8	22.0	35.8	45.9
SR-12M-10M	12	10	22	22	7.7	22.8	22.0	36.6	46.7
SR-12M-16M	12	16	22	22	9.5	22.8	22.0	43.7	53.8
SR-12M-18M	12	18	22	22	9.5	22.8	22.0	43.7	53.8
SR-12M-20M	12	20	22	22	9.5	22.8	22.0	46.0	56.1
SR-12M-22M	12	22	24	22	9.5	22.8	22.0	46.0	56.1
SR-12M-25M	12	25	27	22	9.5	22.8	22.0	52.3	62.4
SR-16M-12M	16	12	24	25	9.1	24.4	22.0	42.9	53.0
SR-18M-12M	18	12	27	30	9.1	24.4	22.0	44.5	54.6
SR-18M-16M	18	16	27	30	12.7	24.4	22.0	46.0	56.1
SR-18M-20M	18	20	27	30	15.1	24.4	22.0	47.5	57.6
SR-18M-22M	18	22	27	30	15.1	24.4	22.0	47.5	57.6
SR-18M-25M	18	25	27	30	15.1	24.4	22.0	52.3	62.4
SR-20M-16M	20	16	30	32	12.7	26.0	22.0	47.8	57.9
SR-20M-18M	20	18	30	32	13.9	26.0	22.0	47.8	57.9
SR-20M-22M	20	22	30	32	15.8	26.0	22.0	49.3	59.4
SR-20M-25M	20	25	30	32	15.8	26.0	22.0	54.1	64.2
SR-22M-18M	22	18	30	32	13.9	26.0	22.0	47.8	57.9
SR-22M-20M	22	20	30	32	15.1	26.0	22.0	49.3	59.4
SR-22M-25M	22	25	30	32	18.3	26.0	22.0	54.1	64.2
SR-25M-18M	25	18	35	38	13.9	31.3	26.5	50.8	63.1
SR-25M-20M	25	20	35	38	15.1	31.3	26.5	52.3	64.6

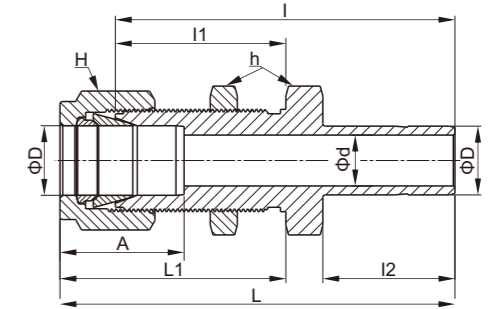
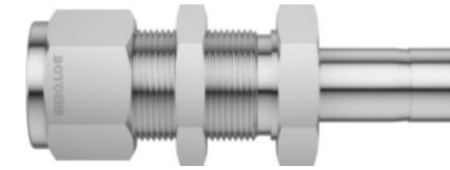
SR
SR sleeve - tube



Metric Tube - British Tube Fitting

Model	D-Tube outside diameter(mm)	D1-Tube outside diameter(in.)	hexagonal width(mm)		size(mm)				
			h	H	d-min diameter	A	B	I	L
SR-3M-2	3	1/8	12	12	2.0	12.9	15.3	26.9	33.5
SR-3M-4	3	1/4	12	12	2.4	12.9	15.3	29.5	36.1
SR-6M-4	6	1/4	14	14	4.8	15.3	17.7	31.8	39.2
SR-6M-5	6	5/16	14	14	4.8	15.3	17.7	32.5	39.9
SR-6M-6	6	3/8	14	14	4.8	15.3	17.7	33.3	40.7
SR-6M-8	6	1/2	14	14	4.8	15.3	17.7	38.9	46.3
SR-8M-6	8	3/8	15	16	6.4	16.2	18.6	34.5	42.0
SR-8M-8	8	1/2	15	16	6.4	16.2	18.6	40.1	47.6
SR-10M-6	10	3/8	18	19	7.1	17.2	19.5	36.6	44.2
SR-10M-8	10	1/2	18	19	7.9	17.2	19.5	42.2	49.8
SR-12M-8	12	1/2	22	22	9.5	22.8	22.0	42.2	52.3
SR-12M-12	12	3/4	22	22	9.5	22.8	22.0	43.7	53.8
SR-18M-12	18	3/4	27	30	15.1	24.4	22.0	46.0	56.1
SR-18M-16	18	1	27	30	15.1	24.4	22.0	52.3	62.4

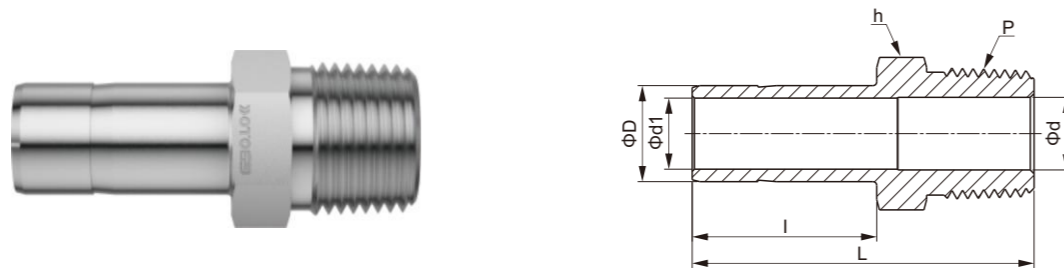
SBR
Wearing card sleeve - tube



British Tube - British Tube Fitting

Model	D-Tube outside diameter(in.)	hexagonal width(in.)		d-min diameter	size(mm)					panel aperture (mm)	max panel thickness (mm)	
		h	H		A	I	I1	I2	L			L1
SBR-2-2	1/8	1/2	7/16	2.03	12.70	42.92	24.63	13.46	49.53	31.24	8.33	12.70
SBR-4-4	1/4	5/8	9/16	4.82	15.24	48.51	26.16	15.74	55.88	33.52	11.50	10.16
SBR-6-6	3/8	3/4	11/16	7.11	16.76	53.84	29.46	17.52	61.21	36.83	14.68	11.17
SBR-8-8	1/2	15/16	7/8	10.41	22.86	62.73	31.75	23.11	72.89	41.91	19.44	12.70
SBR-10-10	5/8	1-1/16	1	12.70	24.38	65.02	32.51	24.70	75.18	42.67	22.62	12.70
SBR-16-16	1	1-5/8	1-1/2	20.32	31.24	88.13	45.21	31.70	100.33	57.40	33.73	19.05

SMA
SMA card sleeve Tube-Male thread



British Tube - NPT thread

Model	D-Tube outside diameter(in.)	P-NPT thread spec	h-hexagonal width(in.)	size(mm)			
				d-min diameter	d1	l	L
SMA-2-2N	1/8	1/8	7/16	4.82	2.28	13.45	29.50
SMA-2-4N	1/8	1/4	9/16	7.11	2.28	13.45	34.80
SMA-3-2N	3/16	1/8	7/16	4.82	3.04	14.20	30.22
SMA-3-4N	3/16	1/4	9/16	7.11	3.04	14.20	35.56
SMA-4-2N	1/4	1/8	7/16	4.82	4.82	15.75	31.80
SMA-4-4N	1/4	1/4	9/16	4.82	4.82	15.75	37.08
SMA-4-6N	1/4	3/8	11/16	4.82	4.82	15.75	37.84
SMA-4-8N	1/4	1/2	7/8	4.82	4.82	15.75	43.43
SMA-5-2N	5/16	1/8	7/16	4.82	6.35	16.80	32.76
SMA-5-4N	5/16	1/4	9/16	6.35	6.35	16.80	38.10
SMA-6-2N	3/8	1/8	7/16	4.82	7.11	17.50	33.50
SMA-6-4N	3/8	1/4	9/16	7.11	7.11	17.50	38.90
SMA-6-6N	3/8	3/8	11/16	7.11	7.11	17.50	39.60
SMA-6-8N	3/8	1/2	7/8	7.11	7.11	17.50	45.20
SMA-8-4N	1/2	1/4	9/16	7.11	9.90	23.20	44.50
SMA-8-6N	1/2	3/8	11/16	9.90	9.90	23.20	45.20
SMA-8-8N	1/2	1/2	7/8	9.90	9.90	23.20	50.80
SMA-10-6N	5/8	3/8	11/16	9.90	12.70	24.70	47.40
SMA-10-8N	5/8	1/2	7/8	11.94	12.70	24.70	52.30
SMA-10-12N	5/8	3/4	1-1/16	14.98	12.70	24.70	52.30
SMA-12-8N	3/4	1/2	7/8	11.94	14.98	24.70	52.30
SMA-12-12N	3/4	3/4	1-1/16	14.98	14.98	24.70	52.30
SMA-12-16N	3/4	1	1-3/8	20.32	14.98	24.70	57.91
SMA-14-12N	7/8	3/4	1-1/16	14.98	17.27	26.70	54.30
SMA-16-12N	1	3/4	1-1/16	15.74	20.32	31.70	58.70
SMA-16-16N	1	1	1-3/8	20.32	20.32	31.70	66.00

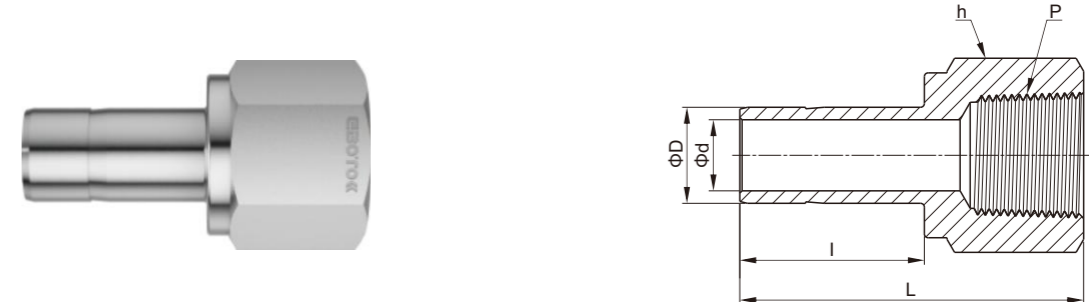
ISO taper threads can be provided upon request

Metric Tube - NPT thread

Model	D-Tube outside diameter(mm)	P-NPT thread spec	h-hexagonal width(mm)	size(mm)			
				d-min diameter	d1	l	L
SMA-6M-2N	6	1/8	12	4.6	4.6	15.75	32.8
SMA-6M-4N	6	1/4	14	4.6	4.6	15.75	38.1
SMA-8M-4N	8	1/4	14	6.3	6.3	16.50	39.1
SMA-10M-4N	10	1/4	14	7.7	7.7	17.50	39.9
SMA-10M-6N	10	3/8	18	7.7	7.7	17.50	40.6
SMA-10M-8N	10	1/2	22	11.9	7.7	17.50	46.2
SMA-12M-4N	12	1/4	16	7.1	9.1	23.50	46.5
SMA-12M-8N	12	1/2	22	11.9	9.1	23.50	52.0
SMA-18M-12N	18	3/4	27	15.9	13.9	24.90	54.8

ISO taper threads can be provided upon request

SFA
card sleeve Tube-Female thread



British Tube - NPT thread

Model	D-Tube outside diameter(in.)	P-NPT thread spec	h-hexagonal width(in.)	size(mm)		
				d-min diameter	l	L
SFA-2-2N	1/8	1/8	9/16	2.28	13.45	31.50
SFA-2-4N	1/8	1/4	3/4	2.28	13.45	35.30
SFA-3-2N	3/16	1/8	9/16	3.04	14.20	32.00
SFA-3-4N	3/16	1/4	3/4	3.04	14.20	35.81
SFA-4-2N	1/4	1/8	9/16	4.82	15.75	33.02
SFA-4-4N	1/4	1/4	3/4	4.82	15.75	37.10
SFA-4-6N	1/4	3/8	7/8	4.82	15.75	39.37
SFA-4-8N	1/4	1/2	1-1/16	4.82	15.75	45.50
SFA-5-2N	5/16	1/8	9/16	6.35	16.80	34.29
SFA-5-4N	5/16	1/4	3/4	6.35	16.80	37.59
SFA-6-2N	3/8	1/8	9/16	7.11	17.50	34.29
SFA-6-4N	3/8	1/4	3/4	7.11	17.50	38.10
SFA-6-6N	3/8	3/8	7/8	7.11	17.50	40.38
SFA-6-8N	3/8	1/2	1-1/16	7.11	17.50	46.73
SFA-8-4N	1/2	1/4	3/4	9.90	23.20	43.43
SFA-8-6N	1/2	3/8	7/8	9.90	23.20	45.46
SFA-8-8N	1/2	1/2	1-1/16	9.90	23.20	51.80
SFA-10-6N	5/8	3/8	7/8	12.70	24.70	48.26
SFA-10-8N	5/8	1/2	1-1/16	12.70	24.70	53.08
SFA-10-12N	5/8	3/4	1-5/16	14.98	24.70	54.86
SFA-12-8N	3/4	1/2	1-1/16	14.98	24.70	52.83
SFA-12-12N	3/4	3/4	1-5/8	14.98	24.70	58.42
SFA-12-16N	3/4	1	1-5/8	14.98	24.70	58.42
SFA-14-12N	7/8	3/4	1-5/16	17.27	26.70	57.15
SFA-16-12N	1	3/4	1-5/16	20.32	31.70	60.70
SFA-16-16N	1	1	1-5/8	20.32	31.70	64.26

ISO taper threads can be provided upon request

Metric Tube - NPT thread

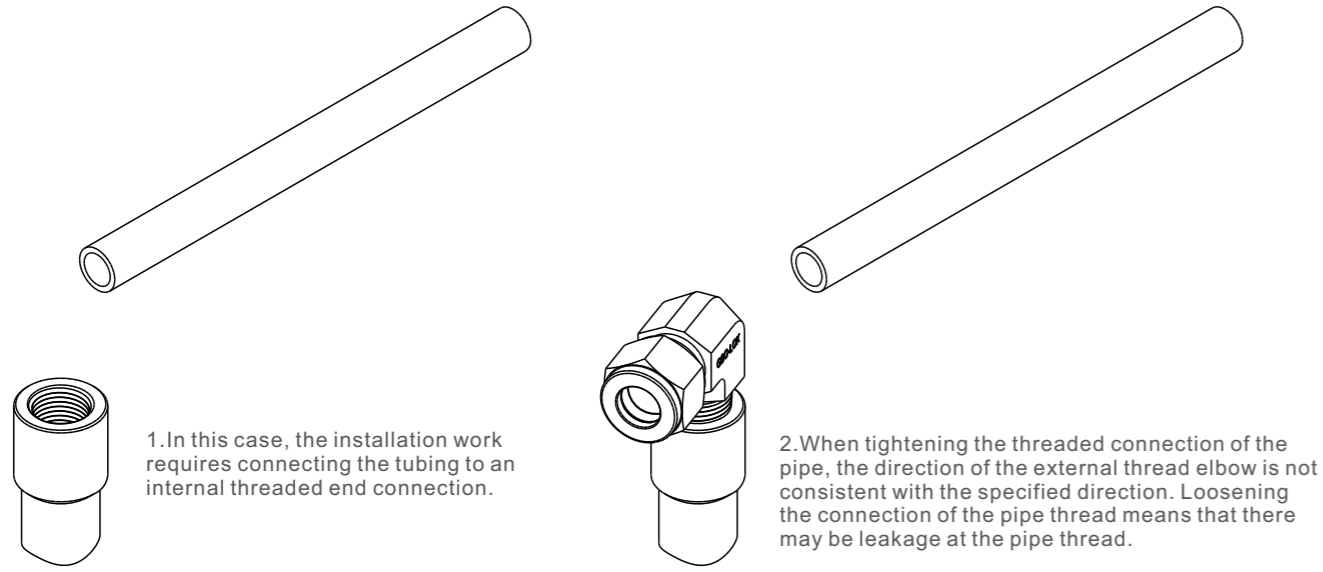
Model	D-Tube outside diameter(mm)	P-NPT thread spec	h-hexagonal width(mm)	size(mm)		
				d-min diameter	l	L
SFA-3M-2N	3	1/8	14	1.8	13.15	31.2
SFA-6M-2N	6	1/8	14	4.6	15.75	32.5
SFA-6M-4N	6	1/4	19	4.6	15.75	37.1
SFA-8M-4N	8	1/4	19	6.3	16.50	37.6
SFA-10M-4N	10	1/4	19	7.7	17.50	38.1
SFA-10M-6N	10	3/8	22	7.7	17.50	40.1
SFA-10M-8N	10	1/2	27	7.7	17.50	46.5
SFA-12M-4N	12	1/4	19	9.1	23.50	43.7
SFA-12M-6N	12	3/8	22	9.1	23.50	46.0
SFA-12M-8N	12	1/2	27	9.1	23.50	52.3
SFA-18M-12N	18	3/4	32	13.9	24.90	54.8

ISO taper threads can be provided upon request

GBO-LOK adapter solves alignment problem

Typical alignment problem

When installing nominal pipe elbows or tees, it is often difficult to align the joints in the desired direction.

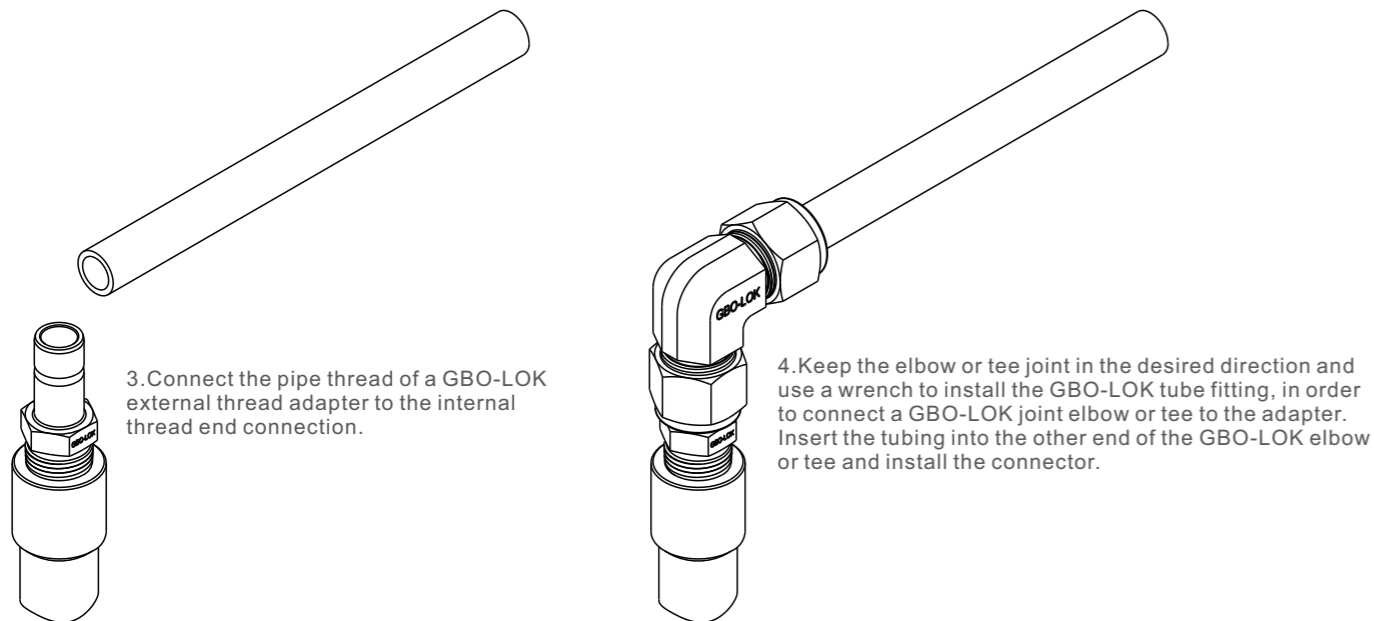


1. In this case, the installation work requires connecting the tubing to an internal threaded end connection.

2. When tightening the threaded connection of the pipe, the direction of the external thread elbow is not consistent with the specified direction. Loosening the connection of the pipe thread means that there may be leakage at the pipe thread.

GBO-LOK Solution

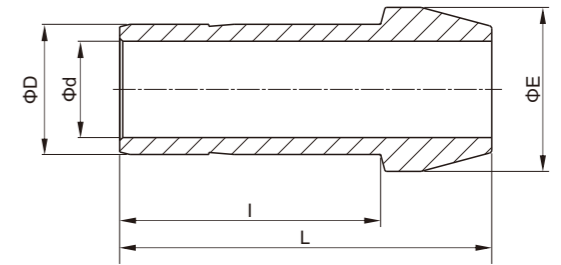
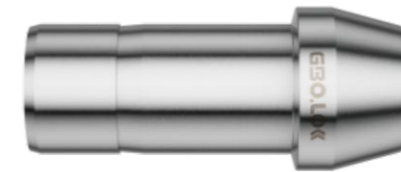
By combining a GBO-LOK tube adapter with a union elbow or tee, this situation can be avoided.



3. Connect the pipe thread of a GBO-LOK external thread adapter to the internal thread end connection.

4. Keep the elbow or tee joint in the desired direction and use a wrench to install the GBO-LOK tube fitting, in order to connect a GBO-LOK joint elbow or tee to the adapter. Insert the tubing into the other end of the GBO-LOK elbow or tee and install the connector.

SPC port joint



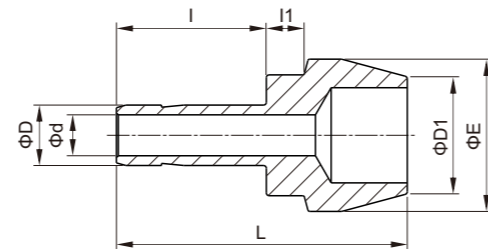
British Tube

Model	D-Tube outside diameter(in.)	size(mm)			
		d-min diameter	E	I	L
SPC-2	1/8	2.28	6.09	15.75	22.35
SPC-4	1/4	4.82	9.39	18.79	24.63
SPC-5	5/16	6.35	10.92	20.06	25.90
SPC-6	3/8	7.11	12.70	20.32	26.16
SPC-8	1/2	9.90	15.74	25.90	35.81
SPC-12	3/4	14.98	22.09	27.68	37.33
SPC-16	1	20.32	28.44	34.54	48.00

Metric Tube

Model	D-Tube outside diameter(mm)	size(mm)			
		d-min diameter	E	I	L
SPC-3M	3	2.1	6.0	15.7	22.2
SPC-6M	6	4.4	9.0	18.7	24.6
SPC-8M	8	6.3	11.0	20.0	25.9
SPC-10M	10	8.2	13.1	20.2	26.1
SPC-12M	12	9.1	15.0	26.0	35.8
SPC-16M	16	12.7	19.0	27.6	37.4

SRPC
variable diameter port joint

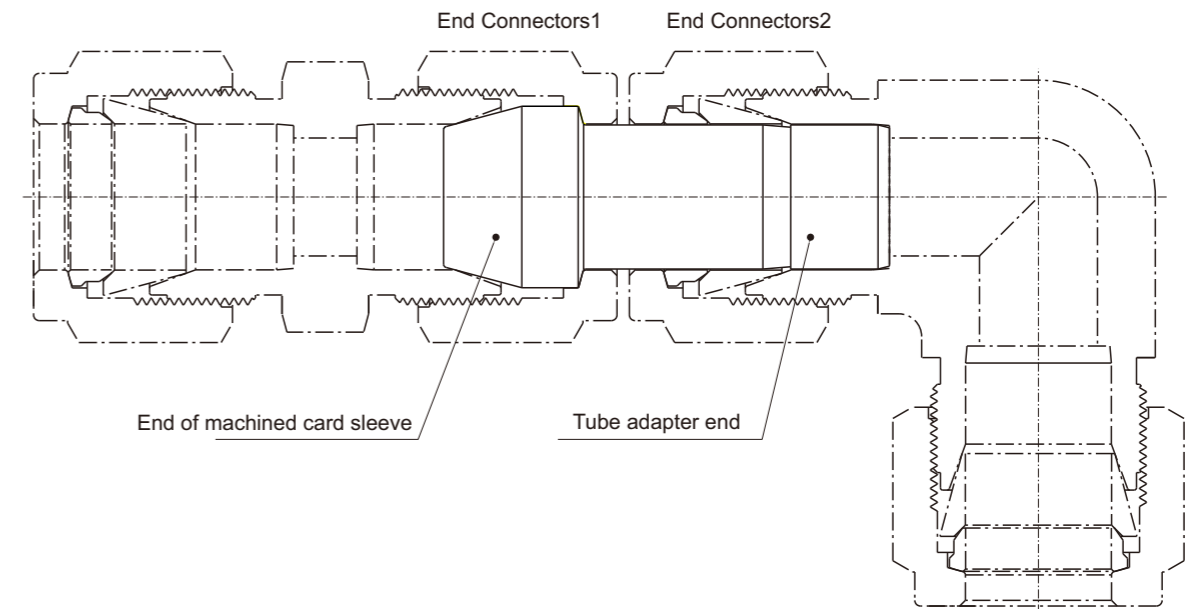


British Tube

Model	D1-Tube outside diameter(in.)	D-Tube outside diameter(in.)	size(mm)				
			d-min diameter	E	l	l1	L
SRPC-2-1	1/8	1/16	0.76	6.09	8.63	2.03	17.27
SRPC-4-1	1/4	1/16	0.76	9.39	8.63	3.55	18.03
SRPC-4-2	1/4	1/8	2.28	9.39	13.46	3.30	22.60
SRPC-6-2	3/8	1/8	2.28	12.70	13.46	3.81	23.11
SRPC-6-4	3/8	1/4	4.82	12.70	15.74	3.30	24.89
SRPC-8-4	1/2	1/4	4.82	15.74	15.74	3.81	29.21
SRPC-8-6	1/2	3/8	7.11	15.74	17.52	3.30	30.48
SRPC-12-8	3/4	1/2	9.90	22.09	24.38	3.81	37.84
SRPC-16-8	1	1/2	9.90	28.44	24.38	4.82	42.67
SRPC-16-12	1	3/4	14.98	28.44	25.90	4.06	43.43

Installation Instructions - End Connectors

Please connect the end of the machined tubing before connecting the end of the tubing adapter.



End of machined card sleeve

Initial installation:

1. Remove the nut and sleeve from one of the two GBO-LOK connectors and discard the sleeve;
2. Slide the nut and tighten it to the mechanical sleeve end connected to the hole;
3. Insert the port connector into GBO-LOK terminal 1 and tighten the nut by hand;
4. Secure the joint body firmly and use a wrench to tighten the nut 114 turns. For 116", 118, 3/16, 2mm, 3mm, and 4mm tube fittings, use a wrench to tighten the nut 118 turns.

Reinstall:

1. This type of terminal connection can be disassembled and reassembled multiple times;
2. When reassembling, tighten the nut by hand and then use a wrench to slightly tighten it

Tube adapter end

Initial installation:

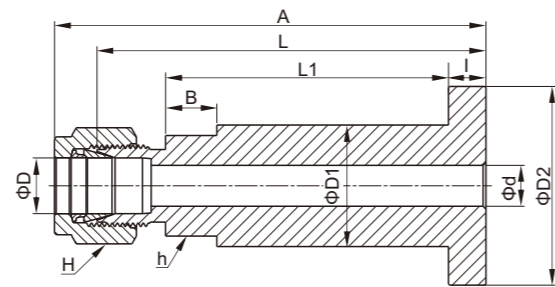
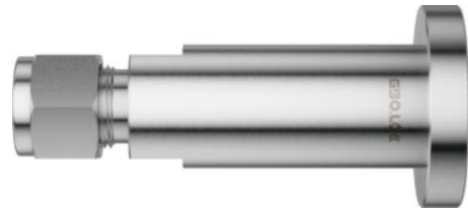
1. Loosen the nut by 1/4 turn from the hand tightening position;
2. Insert the tube into the sleeve connector, ensuring that the tube is pressed against the shoulder of the port;
3. Tighten the nut by hand;
4. Secure the body of the joint or valve firmly, use a wrench to tighten the nut 1-1/4 turn, and for small-sized joints (116" 118" 3116, 2mm, 3mm, and 4mm), use a wrench to tighten the nut 3/4 turn.

Reinstall:

- Before disassembling the joint, mark the pipe along the back of the nut; Draw a line on the plane of the nut and joint body;
2. Insert the card sleeve and tube assembly into the body until the front card sleeve is pressed against the joint body;
 3. Securely fix the joint body and use a wrench to rotate the nut to the previously tightened position indicated by the markings on the pipe, nut, and body plane;
 4. Gently tighten the nut again.

SFTC

card sleeve loose flange joint



British Tube

Model	D-Tube outside diameter (in.)	Flange surface type	hexagonal width(in.)		size(mm)							
			h	H	A	B	D1	D2	d-min diameter	I	L	L1
SFTC-4-SM	1/4	SM	11/16	9/16	80.8	8.9	21.1	34.5	4.8	6.5	74.9	56.5
SFTC-4-SR	1/4	SR	11/16	9/16	80.8	8.9	21.1	34.5	4.8	6.5	74.9	56.5
SFTC-6-SM	3/8	SM	11/16	11/16	82.3	8.9	21.1	34.5	7.1	6.5	74.9	56.5
SFTC-6-SR	3/8	SR	11/16	11/16	82.3	8.9	21.1	34.5	7.1	6.5	74.9	56.5
SFTC-8-SM	1/2	SM	3/4	7/8	85.1	8.9	21.1	34.5	10.4	6.5	74.9	56.5
SFTC-8-SR	1/2	SR	3/4	7/8	85.1	8.9	21.1	34.5	10.4	6.5	74.9	56.5

The flange end is used for NPS 1/2 loose tube flange;
 The flange end size meets the "ASME B16.5 Class2500" specification;
 The flange type "SM" refers to a smooth sealing surface with a surface roughness of Ra3.2-6.3um; The flange surface type "SR" refers to a tooth shaped sealing surface with a surface roughness of Ra6.3-12.5um.



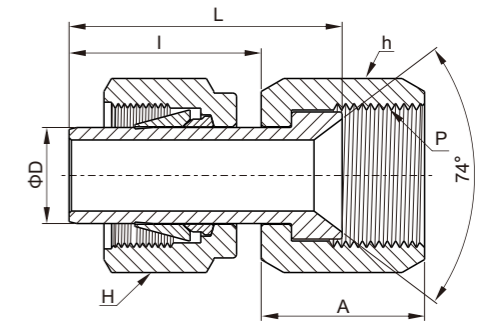
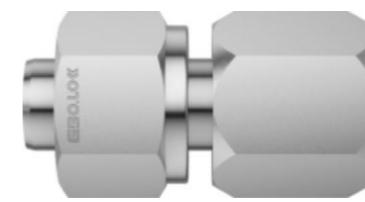
Smooth sealing surface: SM



Tooth shaped sealing surface: SR

SAF

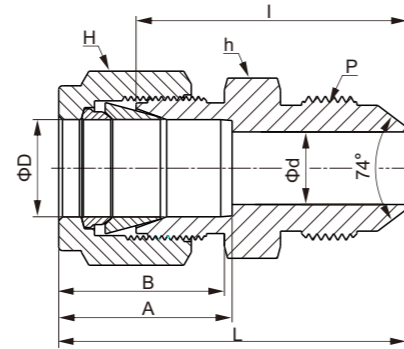
Tube sleeve - AN female threaded interface



British Tube -37 ° Expansion (AN)

Model	D-Tube outside diameter(in.)	AN tube joint size(in.)	P-Straight thread specs	hexagonal width(in.)		size(mm)		
				h	H	A	I	L
SAF-2-2U	1/8	1/8	5/16-24	3/8	7/16	13.71	13.46	18.54
SAF-2-4U	1/8	1/4	7/16-20	9/16	7/16	15.74	13.46	19.05
SAF-4-4U	1/4	1/4	7/16-20	9/16	9/16	15.74	15.74	21.33
SAF-6-6U	3/8	3/8	9/16-18	11/16	11/16	18.28	17.52	24.89
SAF-8-8U	1/2	1/2	3/4-16	7/8	7/8	21.59	23.11	31.75

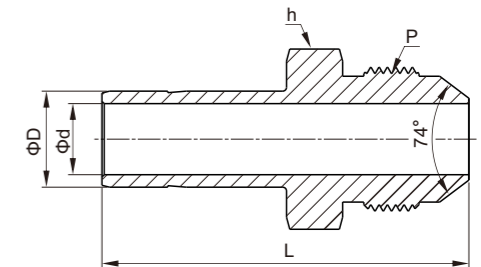
SAU
Tube sleeve—AN male threaded joint



British Tube -37 ° Expansion (AN)

Model	D-Tube outside diameter (in.)	AN tube joint size(in.)	P-Straight thread specs	hexagonal width(in.)		size(mm)				
				h	H	d-min diameter	A	B	I	L
SAU-2-2U	1/8	1/8	5/16-24	7/16	7/16	1.52	12.70	15.24	25.65	32.25
SAU-2-4U	1/8	1/4	7/16-20	1/2	7/16	2.28	12.70	15.24	28.44	35.05
SAU-4-4U	1/4	1/4	7/16-20	1/2	9/16	4.31	15.24	17.78	30.22	37.59
SAU-5-5U	5/16	5/16	1/2-20	9/16	5/8	5.84	16.25	18.54	30.98	38.35
SAU-6-4U	3/8	1/4	7/16-20	5/8	11/16	4.31	16.76	19.30	32.25	39.62
SAU-6-6U	3/8	3/8	9/16-18	5/8	11/16	7.11	16.76	19.30	32.25	39.62
SAU-8-8U	1/2	1/2	3/4-16	13/16	7/8	9.90	22.86	21.84	35.81	45.97
SAU-12-12U	3/4	3/4	1-1/16-12	1-1/8	1-1/8	15.49	24.38	21.84	43.18	53.34
SAU-16-16U	1	1	1-5/16-12	1-3/8	1-1/2	21.33	31.24	26.41	49.27	61.46

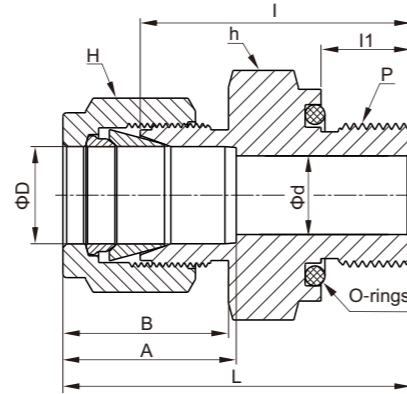
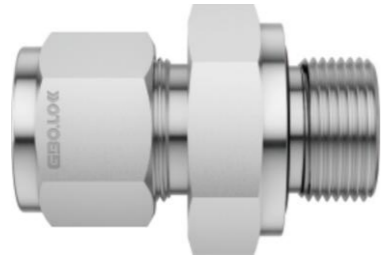
SAA
Tube sleeve - AN male threaded joint



British Tube -37 ° Expansion (AN)

Model	D-Tube outside diameter(in.)	AN tube joint size(in.)	P-Straight thread specs	hexagonal width(in.)	size(mm)	
					d-min diameter	L
SAA-4-4U	1/4	1/4	7/16-20	1/2	4.82	37.08
SAA-6-4U	3/8	1/4	7/16-20	1/2	7.11	38.86
SAA-6-6U	3/8	3/8	9/16-18	5/8	7.11	39.62
SAA-8-8U	1/2	1/2	3/4-16	13/16	9.90	48.51
SAA-12-12U	3/4	3/4	1-1/16-12	1-1/8	14.98	56.13
SAA-16-16U	1	1	1-5/16-12	1-3/8	20.32	65.53

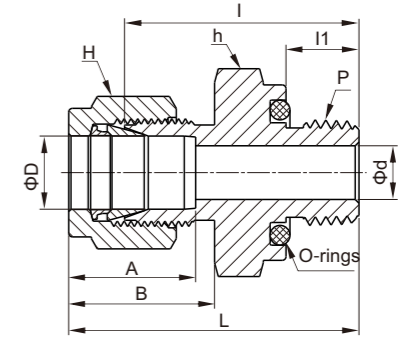
SOSC
card sleeve male threaded joint(O-rings seal)



British Tube—SAE/MS thread

Model	D-Tube outside diameter(in.)	P-SAE/MS thread spec	hexagonal width(in.)		size(mm)						O-rings size
			h	H	d-min diameter	A	B	I	I1	L	
SOSC-2-5U	1/8	5/16-24	9/16	7/16	2.28	12.70	15.24	26.16	8.63	32.76	-011
SOSC-3-6U	3/16	3/8-24	5/8	1/2	3.05	13.71	16.00	27.68	9.65	34.29	-012
SOSC-4-7U	1/4	7/16-20	3/4	9/16	4.82	15.24	17.78	30.98	10.41	38.35	-111
SOSC-5-8U	5/16	1/2-20	7/8	5/8	6.35	16.25	18.54	33.27	11.17	40.64	-112
SOSC-6-9U	3/8	9/16-18	15/16	11/16	7.11	16.76	19.30	35.05	11.93	42.41	-114
SOSC-8-12U	1/2	3/4-16	1-1/8	7/8	10.41	22.86	21.84	35.81	11.93	45.97	-116
SOSC-12-17U	3/4	1-1/16-12	1-1/2	1-1/8	15.75	24.38	21.84	42.16	14.22	52.32	-215
SOSC-16-21U	1	1-5/16-12	1-3/4	1-1/2	22.35	31.24	26.41	45.97	14.22	58.16	-219

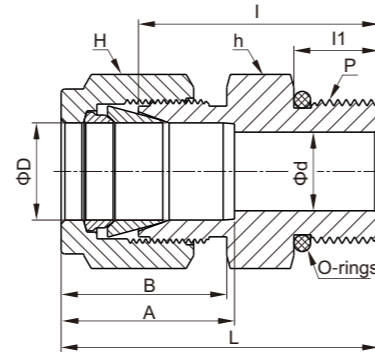
SOPC
card sleeve male threaded joint(O-rings seal)



British Tube - NPT thread

Model	D-Tube outside diameter(in.)	P-NPT thread spec	hexagonal width(in.)		size(mm)						O-rings size
			h	H	d-min diameter	A	B	I	I1	L	
SOPC-2-2N	1/8	1/8	3/4	7/16	2.28	12.70	15.24	26.16	7.11	32.76	-111
SOPC-4-2N	1/4	1/8	3/4	9/16	4.82	15.24	17.78	27.68	7.11	35.05	-111
SOPC-4-4N	1/4	1/4	15/16	9/16	4.82	15.24	17.78	30.98	9.65	38.35	-113
SOPC-6-4N	3/8	1/4	15/16	11/16	7.11	16.76	19.30	32.51	9.65	39.87	-113
SOPC-6-6N	3/8	3/8	1-1/8	11/16	7.11	16.76	19.30	34.03	10.41	41.40	-116
SOPC-6-8N	3/8	1/2	1-5/16	11/16	7.11	16.76	19.30	39.62	13.46	46.99	-212
SOPC-8-8N	1/2	1/2	1-5/16	7/8	10.41	22.86	21.84	39.62	13.46	49.78	-212

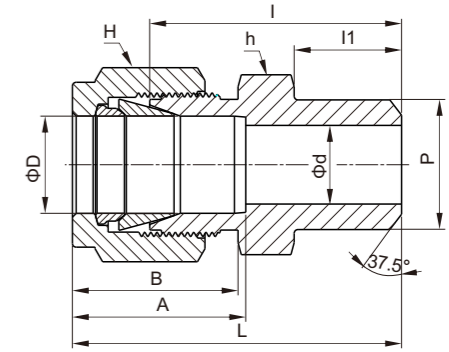
SSMC
card sleeve male threaded joint(O-rings seal)



British Tube - SAE/MS thread

Model	D-Tube outside diameter(in.)	P-SAE/MS thread spec	hexagonal width(in.)		size(mm)						O-rings size
			h	H	d-min diameter	A	B	I	I1	L	
SSMC-2-5U	1/8	5/16-24	7/16	7/16	2.28	12.70	15.24	23.36	7.62	29.97	-902
SSMC-4-7U	1/4	7/16-20	9/16	9/16	4.82	15.24	17.78	26.67	9.14	34.03	-904
SSMC-4-9U	1/4	9/16-18	11/16	9/16	4.82	15.24	17.78	28.19	9.90	35.56	-906
SSMC-4-12U	1/4	3/4-16	7/8	9/16	4.82	15.24	17.78	30.22	11.17	37.59	-908
SSMC-4-14U	1/4	7/8-14	1	9/16	4.82	15.24	17.78	33.27	12.70	40.64	-910
SSMC-5-8U	5/16	1/2-20	5/8	5/8	6.35	16.25	18.54	27.43	9.14	34.79	-905
SSMC-6-7U	3/8	7/16-20	5/8	11/16	5.08	16.76	19.30	28.19	9.14	35.56	-904
SSMC-6-9U	3/8	9/16-18	11/16	11/16	7.11	16.76	19.30	29.71	9.90	37.08	-906
SSMC-6-12U	3/8	3/4-16	7/8	11/16	7.11	16.76	19.30	31.75	11.17	39.11	-908
SSMC-6-14U	3/8	7/8-14	1	11/16	7.11	16.76	19.30	34.79	12.70	42.16	-910
SSMC-8-9U	1/2	9/16-18	13/16	7/8	7.11	22.86	21.84	28.95	9.90	39.11	-906
SSMC-8-12U	1/2	3/4-16	7/8	7/8	10.41	22.86	21.84	31.75	11.17	41.91	-908
SSMC-8-14U	1/2	7/8-14	1	7/8	10.41	22.86	21.84	34.79	12.70	44.95	-910
SSMC-8-17U	1/2	1-1/16-12	1-1/4	7/8	10.41	22.86	21.84	38.86	14.98	49.02	-912
SSMC-10-12U	5/8	3/4-16	15/16	1	10.66	24.38	21.84	31.75	11.17	41.91	-908
SSMC-10-14U	5/8	7/8-14	1	1	12.70	24.38	21.84	35.05	12.70	45.21	-910
SSMC-12-12U	3/4	3/4-16	1-1/16	1-1/8	10.66	24.38	21.84	35.81	11.17	45.97	-908
SSMC-12-17U	3/4	1-1/16-12	1-1/4	1-1/8	15.74	24.38	21.84	38.86	14.98	49.02	-912
SSMC-14-19U	7/8	1-3/16-12	1-3/8	1-1/4	18.28	25.90	21.84	38.86	14.98	49.02	-914
SSMC-16-17U	1	1-1/16-12	1-3/8	1-1/2	16.76	31.24	26.41	41.14	14.98	53.34	-912
SSMC-16-21U	1	1-5/16-12	1-1/2	1-1/2	22.35	31.24	26.41	42.16	14.98	54.35	-916

SPWC
card sleeve weldes joint



British Tube - Pipe

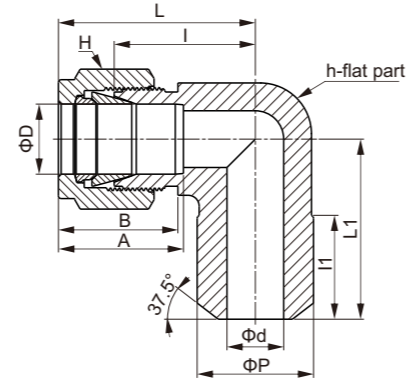
Model	D-Tube outside diameter(in.)	P-Pipe welding size		hexagonal width(in.)		size(mm)					
		Nominal size	OD (mm)	h	H	d-min diameter	A	B	I	I1	L
SPWC-2-2P	1/8	1/8	10.30	7/16	7/16	2.28	12.70	15.24	23.87	9.65	30.48
SPWC-3-2P	3/16	1/8	10.30	7/16	1/2	3.04	13.71	16.00	24.63	9.65	31.24
SPWC-4-2P	1/4	1/8	10.30	1/2	9/16	4.82	15.24	17.78	25.40	9.65	32.76
SPWC-4-4P	1/4	1/4	13.70	9/16	9/16	4.82	15.24	17.78	30.48	14.22	37.84
SPWC-5-2P	5/16	1/8	10.30	9/16	5/8	5.08	16.25	18.54	26.67	9.65	34.03
SPWC-5-4P	5/16	1/4	13.70	9/16	5/8	6.35	16.25	18.54	31.24	14.22	38.60
SPWC-6-4P	3/8	1/4	13.70	5/8	11/16	7.11	16.76	19.30	32.51	14.22	39.87
SPWC-6-6P	3/8	3/8	17.10	11/16	11/16	7.11	16.76	19.30	32.51	14.22	39.87
SPWC-6-8P	3/8	1/2	21.30	7/8	11/16	7.11	16.76	19.30	38.86	19.05	46.22
SPWC-8-6P	1/2	3/8	17.10	13/16	7/8	10.41	22.86	21.84	33.27	14.22	43.43
SPWC-8-8P	1/2	1/2	21.30	7/8	7/8	10.41	22.86	21.84	38.86	19.05	49.02
SPWC-8-12P	1/2	3/4	26.67	1-1/16	7/8	10.41	22.86	21.84	40.38	19.05	50.54
SPWC-10-8P	5/8	1/2	21.30	15/16	1	12.70	24.38	21.84	38.86	19.05	49.02
SPWC-12-12P	3/4	3/4	26.67	1-1/16	1-1/8	15.74	24.38	21.84	40.38	19.05	50.54
SPWC-16-16P	1	1	33.40	1-3/8	1-1/2	22.35	31.24	26.41	50.03	23.87	62.23

Metric Tube - Pipe

Model	D-Tube outside diameter (mm)	P-Pipe welding size		hexagonal width(mm)		size(mm)					
		Nominal size	OD (mm)	h	H	d-min diameter	A	B	I	I1	L
SPWC-3M-2P	3	1/8	10.3	12	12	2.4	12.9	15.3	23.9	9.7	30.5
SPWC-4M-2P	4	1/8	10.3	12	12	2.4	13.7	16.1	24.6	9.7	31.2
SPWC-6M-2P	6	1/8	10.3	14	14	4.8	15.3	17.7	25.4	9.7	32.8
SPWC-6M-4P	6	1/4	13.7	14	14	4.8	15.3	17.7	30.5	14.2	37.9
SPWC-8M-2P	8	1/8	10.3	15	16	5.1	16.2	18.6	26.7	9.7	34.2
SPWC-8M-4P	8	1/4	13.7	15	16	6.4	16.2	18.6	31.2	14.2	38.7
SPWC-8M-8P	8	1/2	21.3	22	16	6.4	16.2	18.6	38.1	19.0	45.6
SPWC-10M-4P	10	1/4	13.7	18	19	7.1	17.2	19.5	33.3	14.2	40.9
SPWC-10M-6P	10	3/8	17.1	18	19	7.9	17.2	19.5	33.3	14.2	40.9
SPWC-10M-8P	10	1/2	21.3	22	19	7.9	17.2	19.5	38.9	19.0	46.5
SPWC-12M-4P	12	1/4	13.7	22	22	7.1	22.8	22.0	33.3	14.2	43.4
SPWC-12M-6P	12	3/8	17.1	22	22	9.5	22.8	22.0	33.3	14.2	43.4
SPWC-12M-8P	12	1/2	21.3	22	22	9.5	22.8	22.0	38.9	19.0	49.0
SPWC-15M-8P	15	1/2	21.3	24	25	11.9	24.4	22.0	38.9	19.0	49.0
SPWC-16M-8P	16	1/2	21.3	24	25	12.7	24.4	22.0	38.9	19.0	49.0
SPWC-18M-8P	18	1/2	21.3	27	30	13.5	24.4	22.0	40.4	19.0	50.5

SMPWE

Card sleeve butt welding elbow

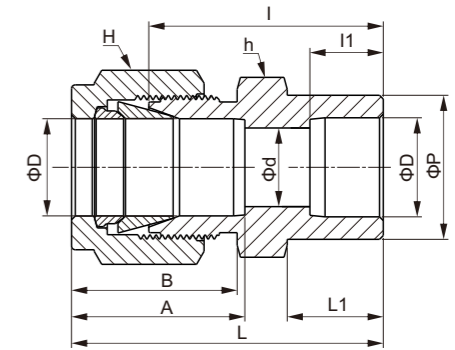


British Tube - Pipe

Model	D-Tube outside diameter(in.)	P-Pipewelding size	hexagonal width(in.)	size(mm)								
				Nominal size	OD (mm)	h	H	d-min diameter	A	B	I	I1
SMPWE-4-4P	1/4	1/4	13.70	1/2	9/16	4.82	15.24	17.78	19.55	14.22	26.90	23.37
SMPWE-6-4P	3/8	1/4	13.70	5/8	11/16	7.11	16.76	19.30	23.11	14.22	30.48	25.40
SMPWE-8-8P	1/2	1/2	21.30	13/16	7/8	10.41	22.86	21.84	25.90	19.05	36.06	33.02

SSWC

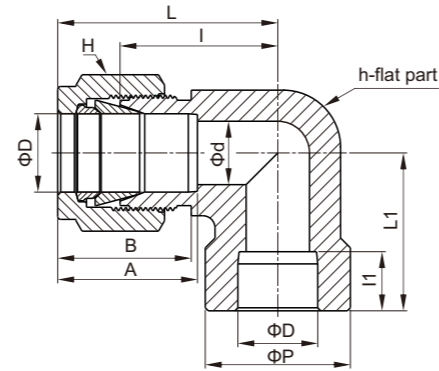
card sleeve socket weldes joint



British Tube

Model	D-Tube outside diameter(in.)	hexagonal width(in.)		size(mm)								
		h	H	d-min diameter	A	B	P	I	I1	L	L1	
SSWC-2	1/8	7/16	7/16	2.28	12.70	15.24	7.87	22.35	6.35	28.95	8.63	
SSWC-4	1/4	1/2	9/16	4.82	15.24	17.78	11.17	26.16	7.87	33.52	10.41	
SSWC-6	3/8	5/8	11/16	7.11	16.76	19.30	15.74	30.22	9.65	37.59	11.93	
SSWC-8	1/2	13/16	7/8	10.41	22.86	21.84	19.05	30.98	12.70	41.14	11.93	
SSWC-12	3/4	1-1/16	1-1/8	15.74	24.38	21.84	26.67	33.27	14.22	43.43	11.93	
SSWC-16	1	1-3/8	1-1/2	22.35	31.24	26.41	33.27	40.38	19.05	52.57	14.22	

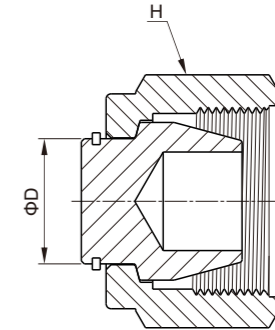
SSWE
card sleeve welding elbow



British Tube

Model	D-Tube outside diameter(in.)	hexagonal width(in.)		size(mm)							
		h	H	d-min diameter	A	B	P	I	I1	L	L1
SSWE-4	1/4	1/2	9/16	4.82	15.24	17.78	12.70	19.55	7.87	26.92	19.55
SSWE-6	3/8	5/8	11/16	7.11	16.76	19.30	15.75	23.11	9.65	30.48	23.11
SSWE-8	1/2	13/16	7/8	10.41	22.86	21.84	20.57	25.90	12.70	36.06	25.90
SSWE-12	3/4	1-1/16	1-1/8	15.74	24.38	21.84	26.92	29.71	14.22	39.87	29.71
SSWE-16	1	1-3/8	1-1/2	22.35	31.24	26.41	35.05	36.83	19.05	49.02	36.83

SP
card sleeve blocking head



British Tube

Model	D-Tube outside diameter(in.)	H-hexagonal width(in.)
SP-2	1/8	7/16
SP-3	3/16	1/2
SP-4	1/4	9/16
SP-5	5/16	5/8
SP-6	3/8	11/16
SP-8	1/2	7/8
SP-10	5/8	1
SP-12	3/4	1-1/8
SP-14	7/8	1-1/4
SP-16	1	1-1/2

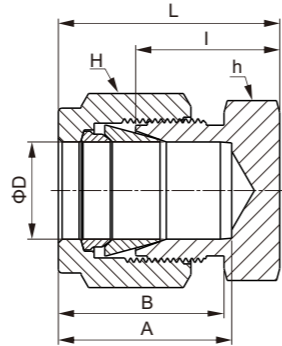
Metric Tube

Model	D-Tube outside diameter(mm)	H-hexagonal width(mm)
SP-2M	2	12
SP-3M	3	12
SP-4M	4	12
SP-6M	6	14
SP-8M	8	16
SP-10M	10	19
SP-12M	12	22
SP-15M	15	25
SP-16M	16	25
SP-18M	18	30
SP-20M	20	32
SP-22M	22	32
SP-25M	25	38

Installation instructions:

1. Remove the nut and sleeve from the body;
2. Screw the plug onto the body. For specifications greater than or equal to 1/4 (6mm), tighten the nut by hand and then use a wrench to tighten 114 turns; For 1/8", 3/16", 2mm, 3mm, 4mm, tighten the nut by hand and then use a wrench to tighten it by 1/8 turn.

SC
card sleeve pipe cap



British Tube

Model	D-Tube outside diameter(in.)	hexagonal width(in.)		size(mm)			
		h	H	A	B	I	L
SC-1	1/16	5/16	5/16	8.63	10.92	11.20	14.98
SC-2	1/8	7/16	7/16	12.70	15.24	13.46	20.06
SC-3	3/16	7/16	1/2	13.71	16.00	14.73	21.33
SC-4	1/4	1/2	9/16	15.24	17.78	16.00	23.36
SC-5	5/16	9/16	5/8	16.25	18.54	17.01	24.38
SC-6	3/8	5/8	11/16	16.76	19.30	18.28	25.65
SC-8	1/2	13/16	7/8	22.86	21.84	19.05	29.21
SC-10	5/8	15/16	1	24.38	21.84	19.81	29.97
SC-12	3/4	1-1/16	1-1/8	24.38	21.84	21.33	31.49
SC-14	7/8	1-3/16	1-1/4	25.90	21.84	23.87	34.03
SC-16	1	1-3/8	1-1/2	31.24	26.41	26.16	38.35

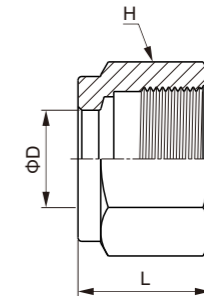
Metric Tube

Model	D-Tube outside diameter(mm)	hexagonal width(mm)		size(mm)			
		h	H	A	B	I	L
SC-2M	2	12	12	12.9	15.3	13.5	20.1
SC-3M	3	12	12	12.9	15.3	13.5	20.1
SC-4M	4	12	12	13.7	16.1	14.7	21.3
SC-6M	6	14	14	15.3	17.7	15.7	23.1
SC-8M	8	15	16	16.2	18.6	17.0	24.5
SC-10M	10	18	19	17.2	19.5	19.0	26.6
SC-12M	12	22	22	22.8	22.0	19.0	29.1
SC-15M	15	24	25	24.4	22.0	19.8	29.9
SC-16M	16	24	25	24.4	22.0	19.8	29.9
SC-18M	18	27	30	24.4	22.0	21.3	31.4
SC-20M	20	30	32	26.0	22.0	23.9	34.0
SC-22M	22	30	32	26.0	22.0	23.9	34.0
SC-25M	25	35	38	31.3	26.5	26.2	38.5

Installation instructions:

1. Insert the steel pipe into the tube cap;
2. For specifications greater than or equal to 1/4 (6mm), tighten the nut by hand and then use a wrench to tighten it for 1-1/4 turns; For 1/8", 3/16", 2mm, 3mm, 4mm, tighten the nut by hand and then use a wrench to tighten it 3/4 turns.

SN
card sleeve nut



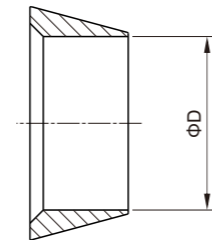
British Tube

Model	D-Tube outside diameter(in.)	H-hexagonal width(in.)	L(mm)
SN-1	1/16	5/16	7.90
SN-2	1/8	7/16	11.93
SN-3	3/16	1/2	11.93
SN-4	1/4	9/16	12.70
SN-5	5/16	5/8	13.46
SN-6	3/8	11/16	14.22
SN-8	1/2	7/8	17.52
SN-10	5/8	1	17.52
SN-12	3/4	1-1/8	17.52
SN-14	7/8	1-1/4	17.52
SN-16	1	1-1/2	20.60

Metric Tube

Model	D-Tube outside diameter(mm)	H-hexagonal width(mm)	L(mm)
SN-2M	2	12	11.9
SN-3M	3	12	11.9
SN-4M	4	12	11.9
SN-6M	6	14	12.7
SN-8M	8	16	13.5
SN-10M	10	19	15.1
SN-12M	12	22	17.4
SN-14M	14	25	17.4
SN-15M	15	25	17.4
SN-16M	16	25	17.4
SN-18M	18	30	17.4
SN-20M	20	32	17.4
SN-22M	22	32	17.4
SN-25M	25	38	20.6

SFF
front card sleeve joint



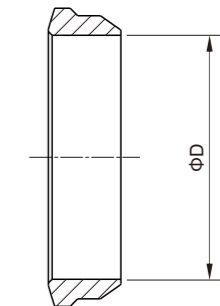
British Tube

Model	D-Tube outside diameter(in.)
SFF-1	1/16
SFF-2	1/8
SFF-3	3/16
SFF-4	1/4
SFF-5	5/16
SFF-6	3/8
SFF-8	1/2
SFF-10	5/8
SFF-12	3/4
SFF-14	7/8
SFF-16	1

Metric Tube

Model	D-Tube outside diameter(mm)
SFF-2M	2
SFF-3M	3
SFF-4M	4
SFF-6M	6
SFF-8M	8
SFF-10M	10
SFF-12M	12
SFF-14M	14
SFF-15M	15
SFF-16M	16
SFF-18M	18
SFF-20M	20
SFF-22M	22
SFF-25M	25

SBF
rear card sleeve joint



British Tube

Model	D-Tube outside diameter(in.)
SBF-1	1/16
SBF-2	1/8
SBF-3	3/16
SBF-4	1/4
SBF-5	5/16
SBF-6	3/8
SBF-8	1/2
SBF-10	5/8
SBF-12	3/4
SBF-14	7/8
SBF-16	1

Metric Tube

Model	D-Tube outside diameter(mm)
SBF-2M	2
SBF-3M	3
SBF-4M	4
SBF-6M	6
SBF-8M	8
SBF-10M	10
SBF-12M	12
SBF-14M	14
SBF-15M	15
SBF-16M	16
SBF-18M	18
SBF-20M	20
SBF-22M	22
SBF-25M	25

SFS
card sleeve component



One set of components includes:
10 front card sleeves and 10 rear card sleeves.

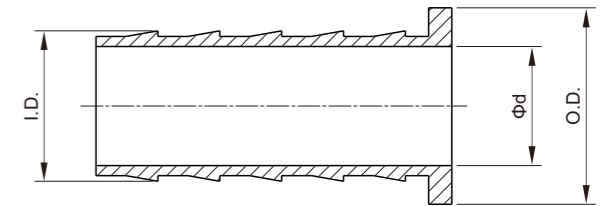
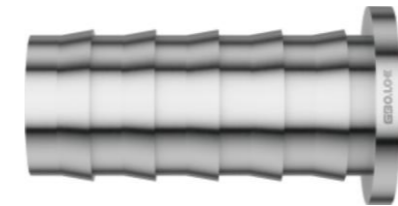
British Tube

Model	D-Tube outside diameter(in.)
SFS-1	1/16
SFS-2	1/8
SFS-3	3/16
SFS-4	1/4
SFS-5	5/16
SFS-6	3/8
SFS-8	1/2
SFS-10	5/8
SFS-12	3/4
SFS-14	7/8
SFS-16	1

Metric Tube

Model	D-Tube outside diameter(mm)
SFS-2M	2
SFS-3M	3
SFS-4M	4
SFS-6M	6
SFS-8M	8
SFS-10M	10
SFS-12M	12
SFS-14M	14
SFS-15M	15
SFS-16M	16
SFS-18M	18
SFS-20M	20
SFS-22M	22
SFS-25M	25

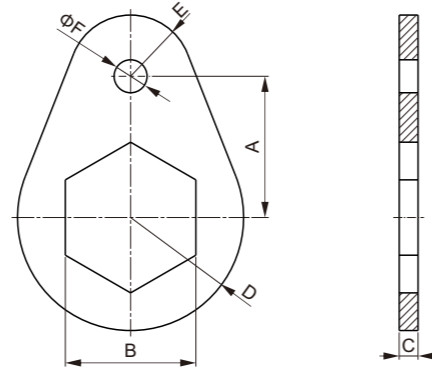
SI
Hose Plug



British Tube

Model	O.D.-hose outside diameter(in.)	I.D.-hose inside diameter(in.)	d-hole inner diameter(mm)
SI-3-2	3/16	1/8	2.28
SI-4-2	1/4	1/8	2.28
SI-4-3	1/4	3/16	3.55
SI-5-2	5/16	1/8	2.28
SI-5-3	5/16	3/16	3.04
SI-5-4	5/16	1/4	4.82
SI-6-3	3/8	3/16	3.04
SI-6-4	3/8	1/4	4.82
SI-8-4	1/2	1/4	4.82
SI-8-6	1/2	3/8	7.87
SI-10-6	5/8	3/8	7.87
SI-10-8	5/8	1/2	11.17
SI-12-8	3/4	1/2	11.17
SI-12-10	3/4	5/8	14.22
SI-16-12	1	3/4	17.52

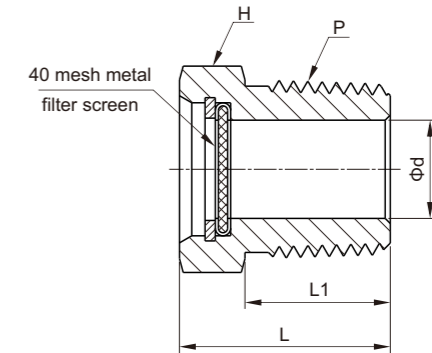
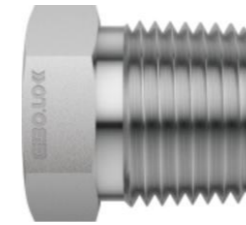
SBHR
board fastener



Model	size(in.)						Drill Size (mm)
	A	B	C	D	E	F	
SBHR-1	3/8	5/16	1/8	5/16	5/32	5/32	3.05
SBHR-2	1/2	1/2	1/8	13/32	7/32	5/32	3.05
SBHR-3 ①	9/16	9/16	1/8	15/32	1/4	5/32	3.05
SBHR-4 ②	5/8	5/8	1/8	1/2	9/32	5/32	3.05
SBHR-5	11/16	11/16	1/8	9/16	5/16	5/32	3.05
SBHR-6	3/4	3/4	1/8	5/8	11/32	5/32	3.05
SBHR-8 ③	15/16	15/16	1/8	3/4	13/32	7/32	3.66
SBHR-10 ④	1	1-1/16	1/8	13/16	13/32	7/32	3.66
SBHR-12 ⑤	1-1/16	1-3/16	1/8	29/32	15/32	7/32	3.66
SBHR-14	1-1/8	1-5/16	1/8	1-1/32	17/32	7/32	3.66
SBHR-16	1-9/32	1-5/8	1/8	1-5/32	9/16	7/32	3.66
SBHR-18M	11/16	18mm	1/8	9/16	5/16	5/32	3.05
SBHR-20M	15/16	22mm	1/8	3/4	13/32	7/32	3.66

1. Can be applied to 3mm and 4mm through boards;
2. Can be applied to 6mm through board;
3. Can be applied to 12mm through board;
4. Can be applied to 15mm and 16mm through boards;
5. Can be applied to 18mm through boards.

SVP
emission protector



Model	P-NPT thread spec	size(in.)			H-hexagonal width(in.)
		L	L1	d	
SVP-4N	1/4	19.81	14.22	7.11	9/16
SVP-6N	3/8	20.57	14.22	10.41	11/16
SVP-8N	1/2	26.16	19.05	12.70	7/8
SVP-12N	3/4	26.92	19.05	18.29	1-1/16